

LINDEN GATEWAY SMALL AREA STUDY

Task Force Meeting #4
January 24, 2008

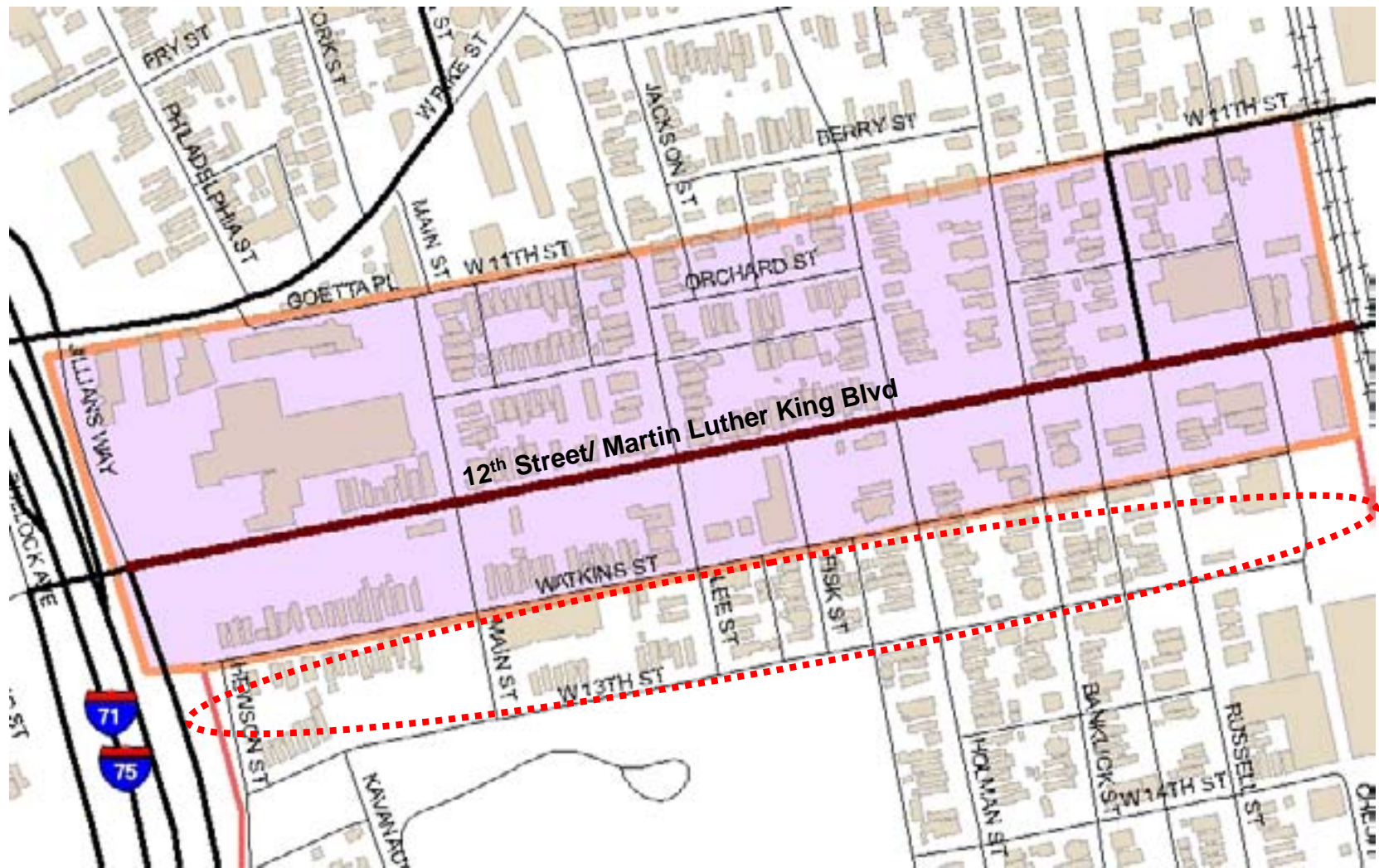


City of Covington

NKAPC



12TH STREET – Recommendations [Preliminary discussions]



12TH STREET - Recommendations [Preliminary discussions]



Bavarian Brewery:

- KRS Chapter 99 Plan
- Kenton County Planning Commission App
- University of Kentucky Project
- Gateway feature at corner of 12th Street & Jillian's Way



12TH STREET - Recommendations [Preliminary discussions]

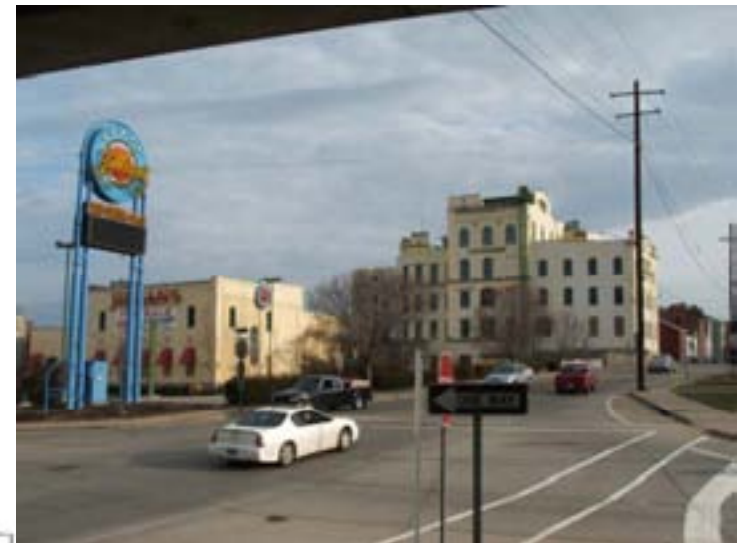
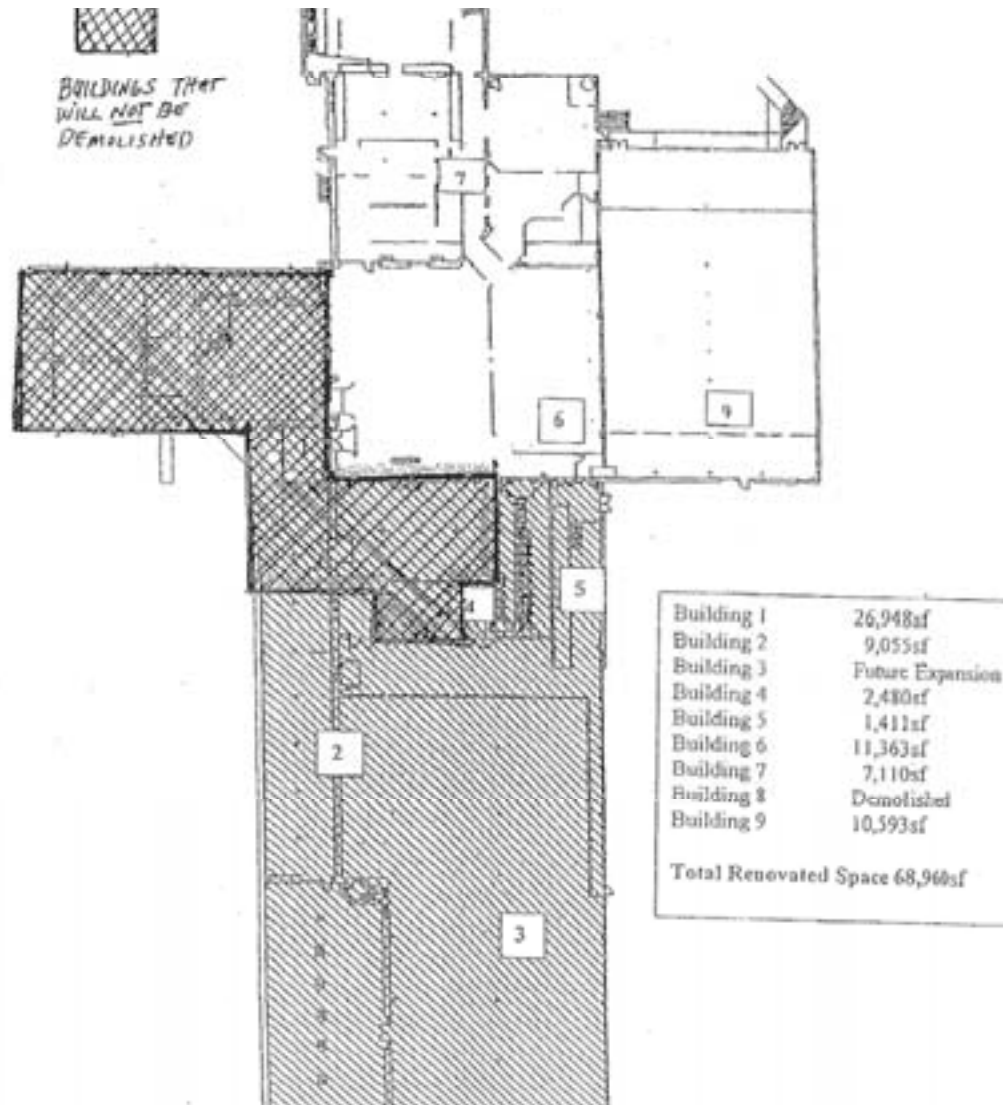


KRS 99 PLAN:



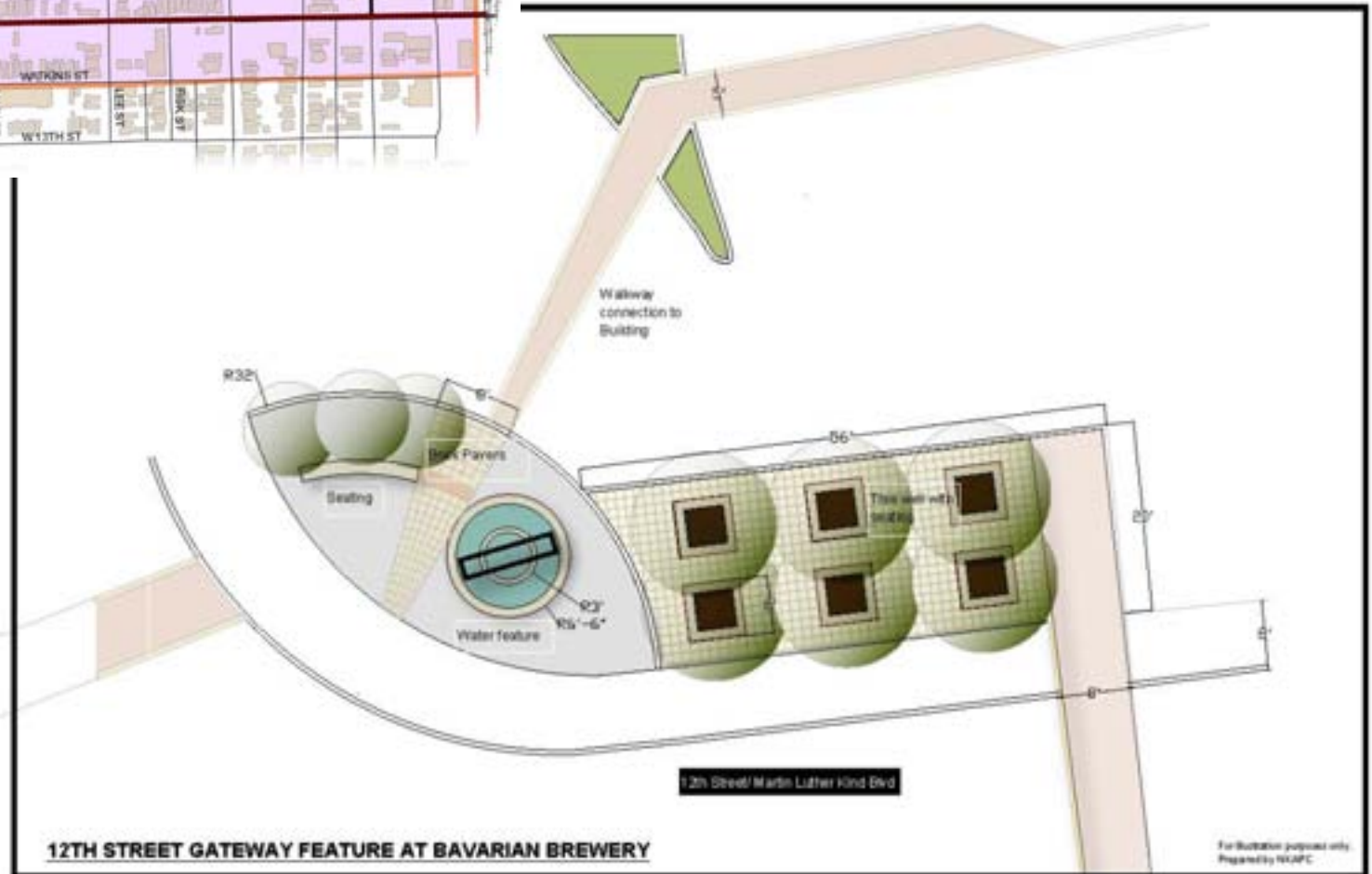
12TH STREET - Recommendations [Preliminary discussions]

KCPC Application:



12TH STREET - Recommendations [Preliminary discussions]

12th Street Gateway



12TH STREET - Recommendations [Preliminary discussions]



UK Project:

- ❑ Redevelopment of brewery site
- ❑ Redevelopment of south side of 12th Street
- ❑ Interconnectivity – Brewery, Park, Linden Grove Cemetery and St.E Site



12TH STREET - Recommendations [Preliminary discussions]



Interpretive Park:

- ❑ 12th Street widening – Section 106 review
- ❑ Interstate exit to Main Street
- ❑ SD#1 Green Infrastructure Project



12TH STREET - Recommendations [Preliminary discussions]

Opportunity Sites



12TH STREET - Recommendations [Preliminary discussions]

Opportunity Sites



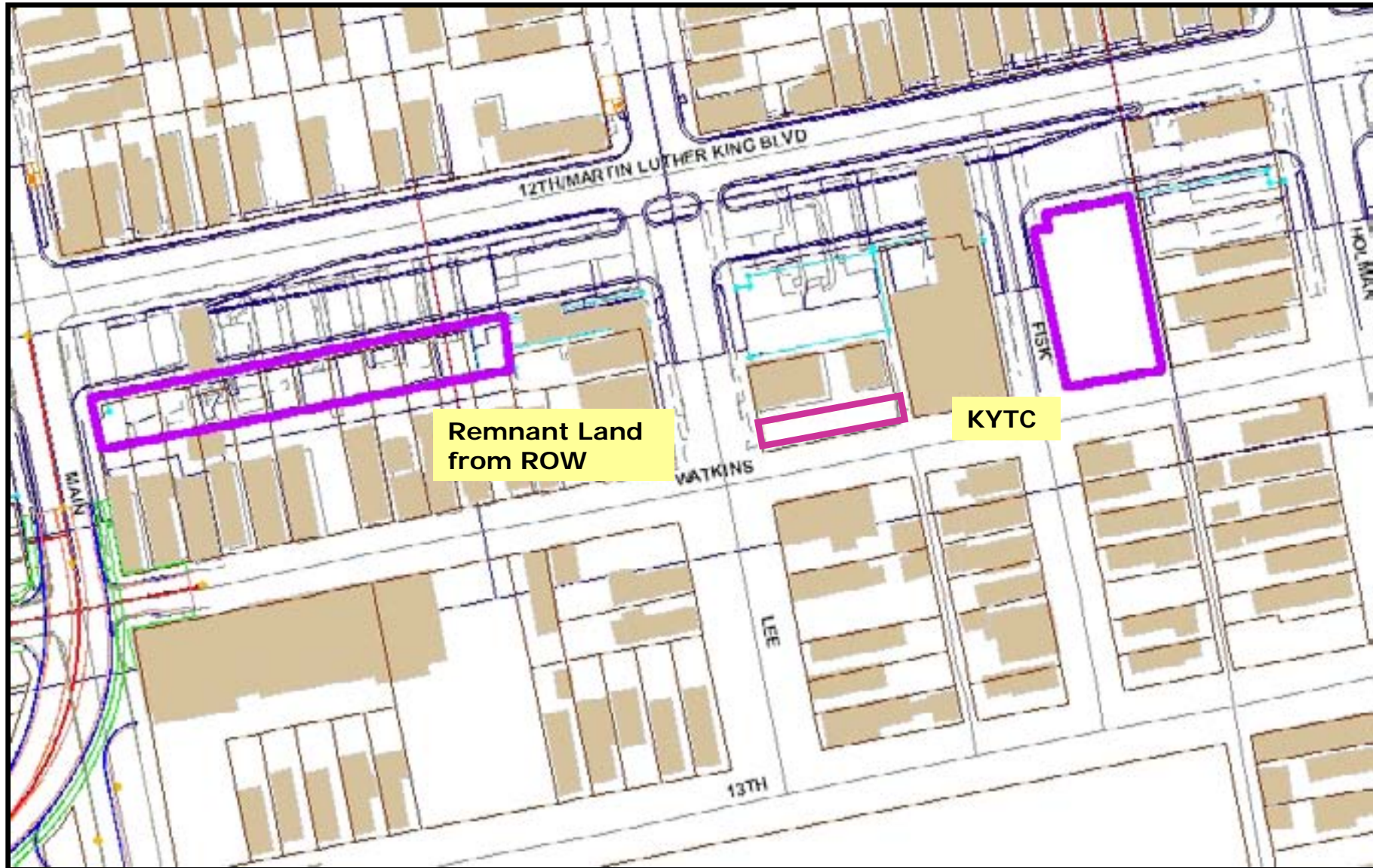
12TH STREET - Recommendations [Preliminary discussions]

Opportunity Sites



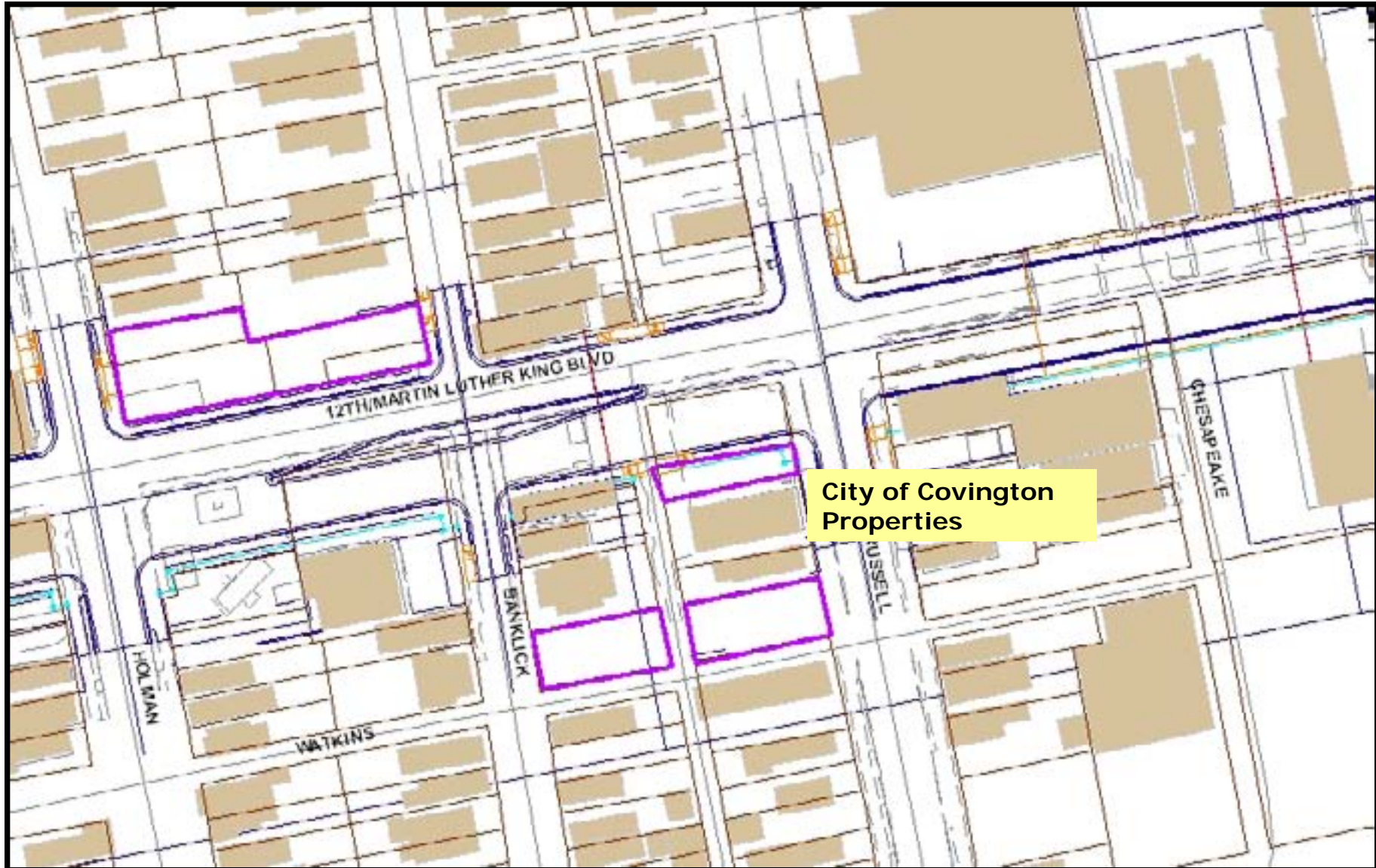
12TH STREET - Recommendations [Preliminary discussions]

Opportunity Sites



12TH STREET - Recommendations [Preliminary discussions]

Opportunity Sites



12TH STREET - Recommendations [Preliminary discussions]

12th Street Building Design

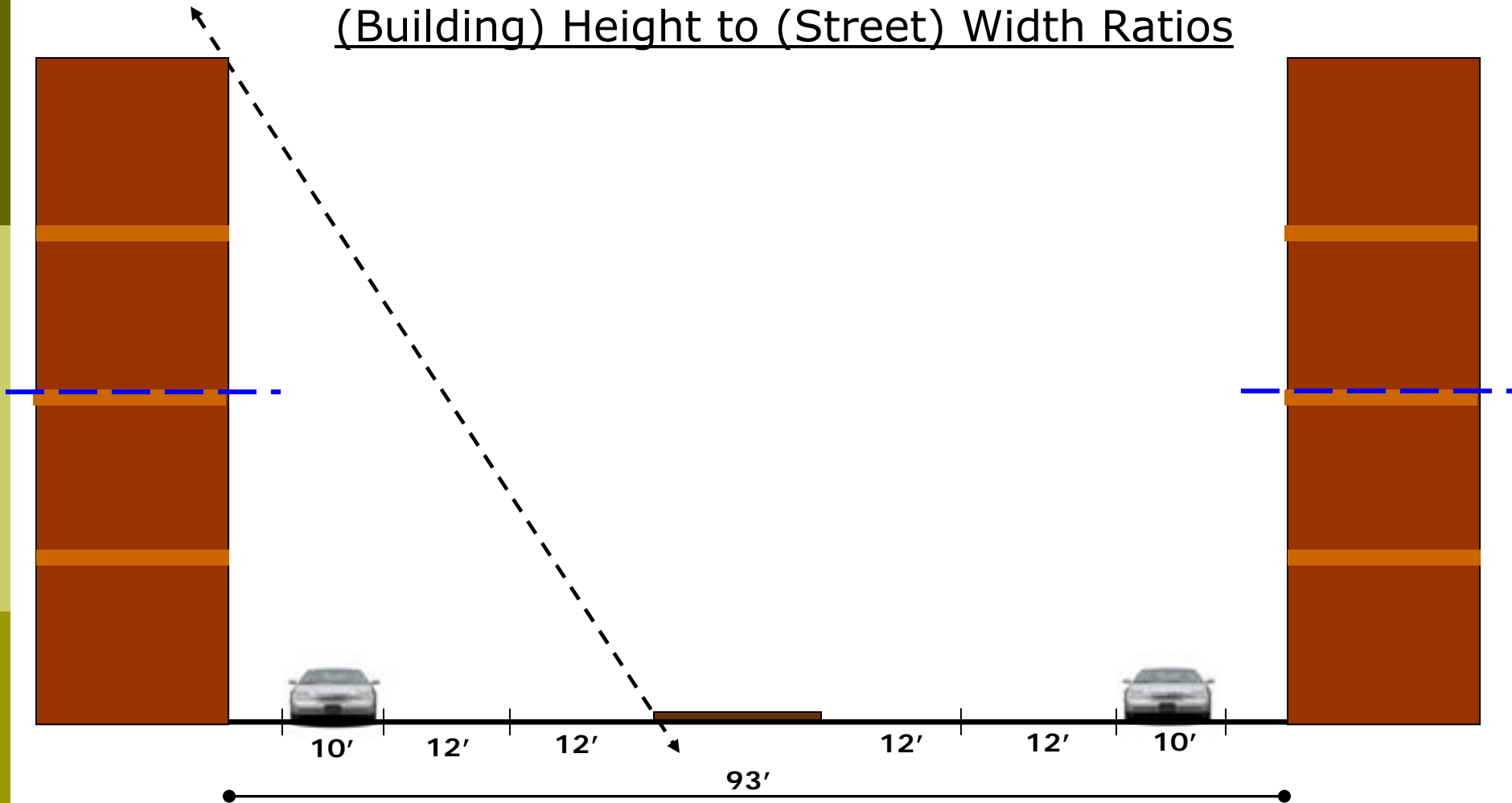
12TH STREET - Recommendations [Preliminary discussions]

(Building) Height to (Street) Width Ratios



12TH STREET - Recommendations [Preliminary discussions]

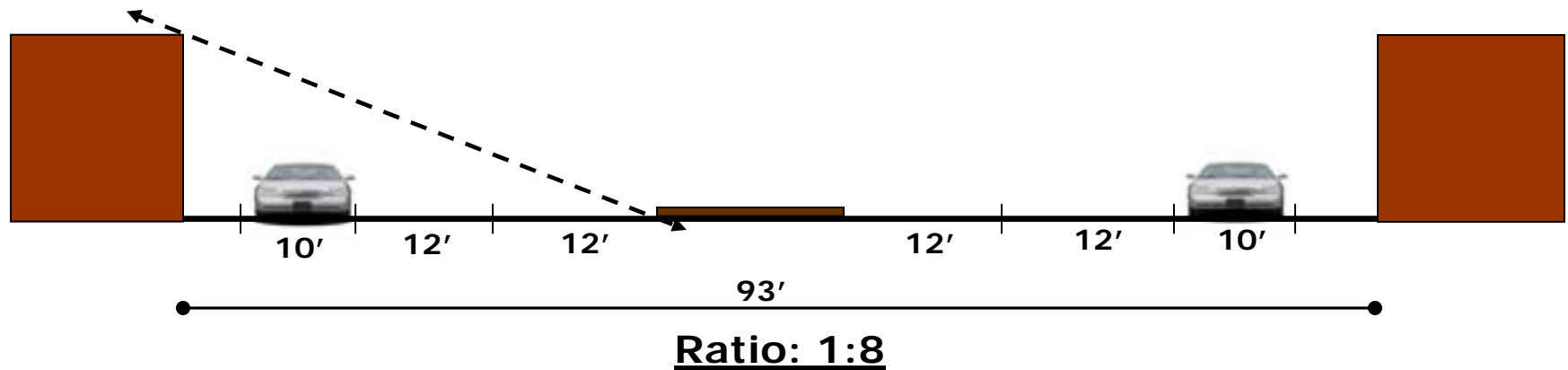
(Building) Height to (Street) Width Ratios



Ratio: [1:1] or [1:2]

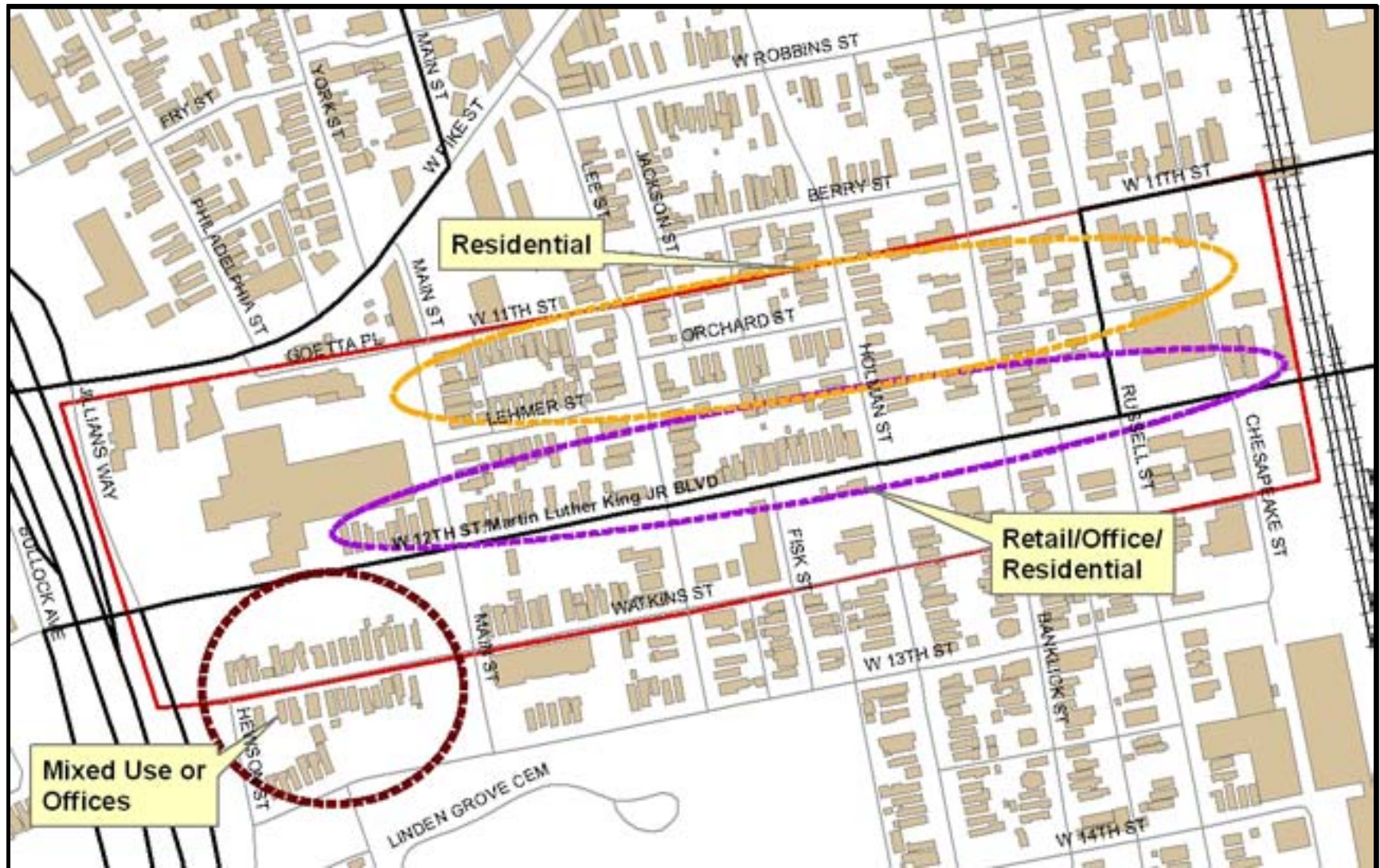
12TH STREET - Recommendations [Preliminary discussions]

(Building) Height to (Street) Width Ratios



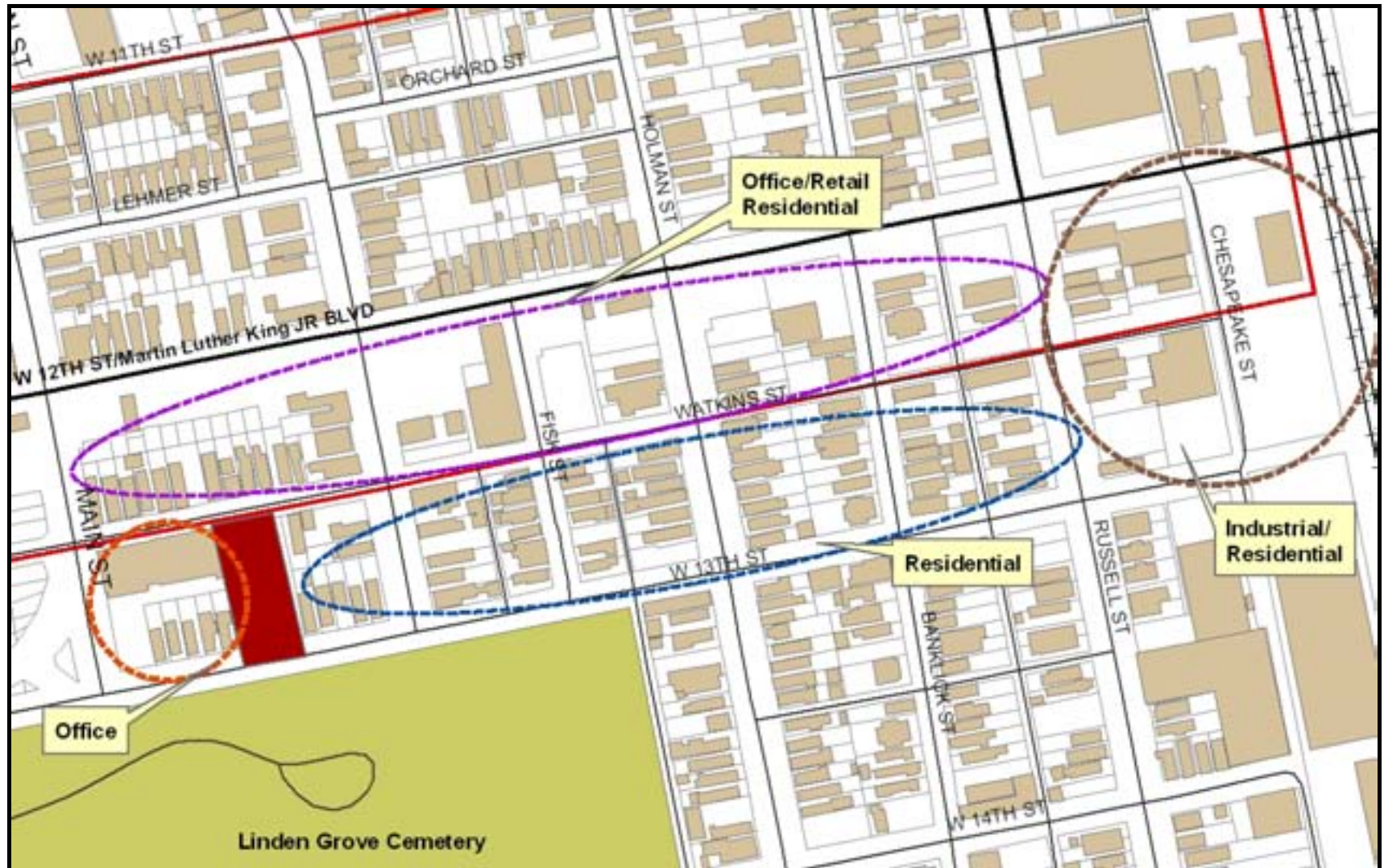
12TH STREET - Recommendations [Preliminary discussions]

Land Use – Concepts



12TH STREET - Recommendations [Preliminary discussions]

Land Use – Concepts

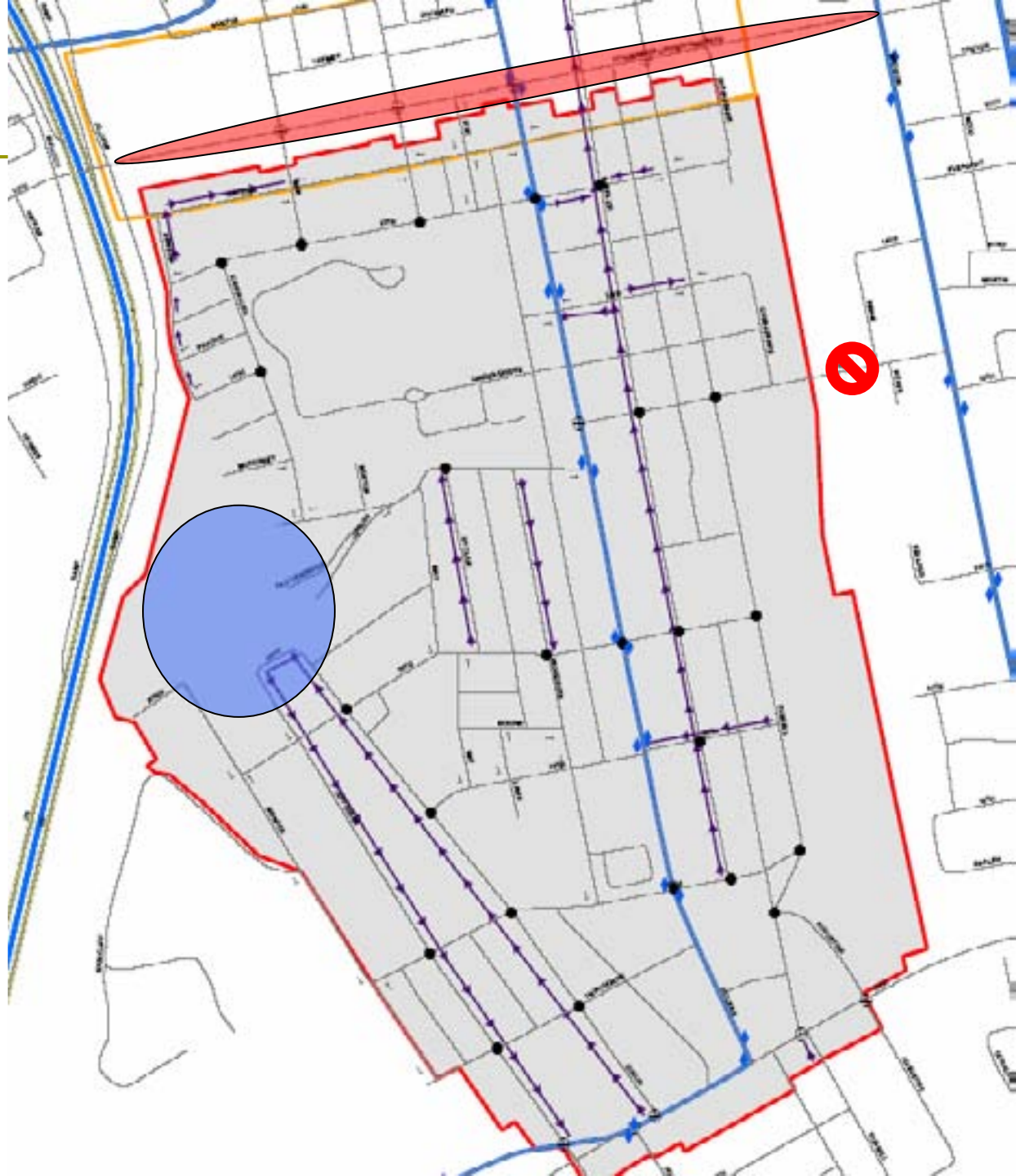


12TH STREET - Recommendations [Preliminary discussions]

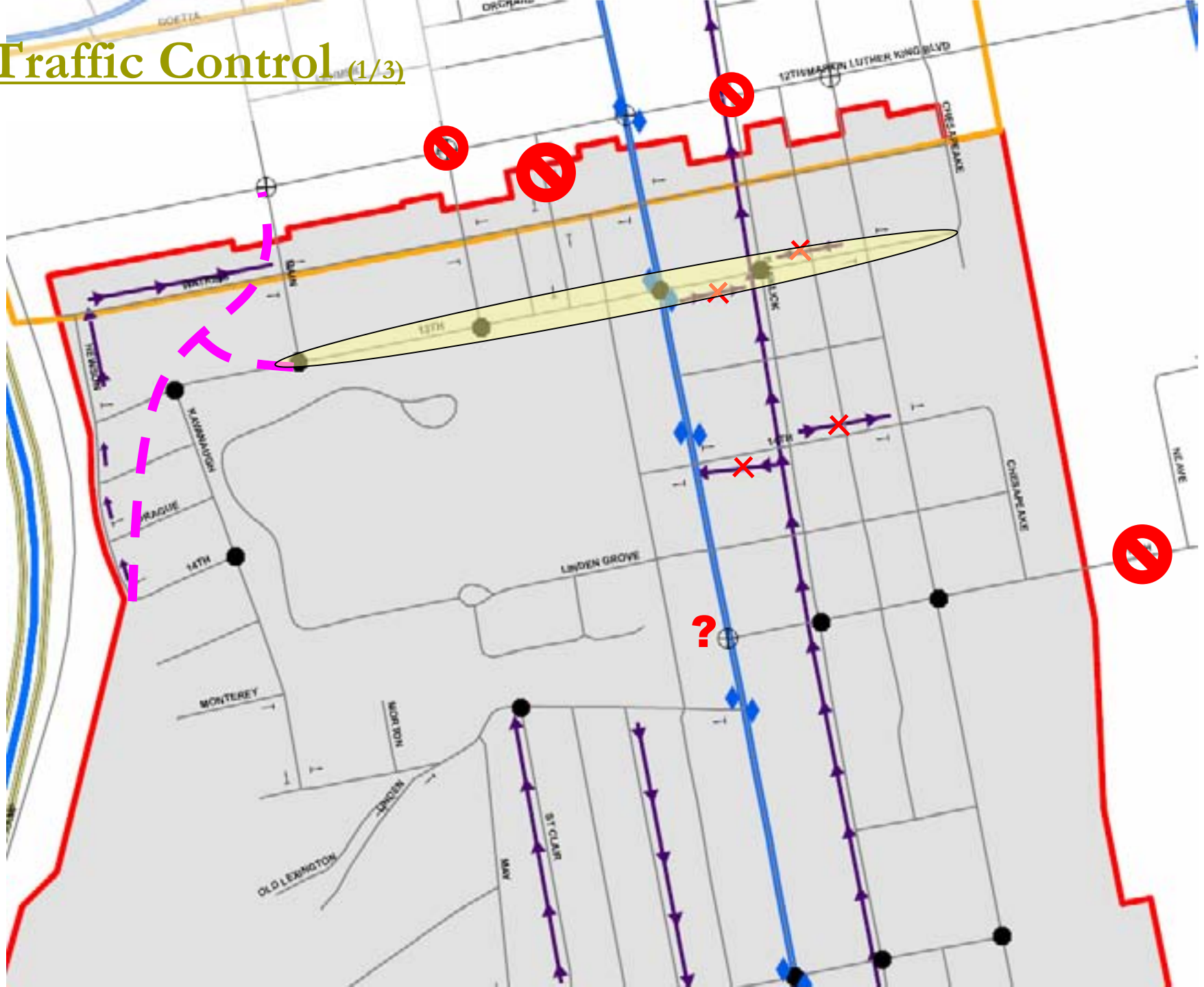
Recommendations:

- Land use
- Transportation
- Zoning designations
- Design guidelines for 12th Street
- Gateway features
- Connectivity – Brewery, park, islands, cemetery and medical facility.
- Streetscape

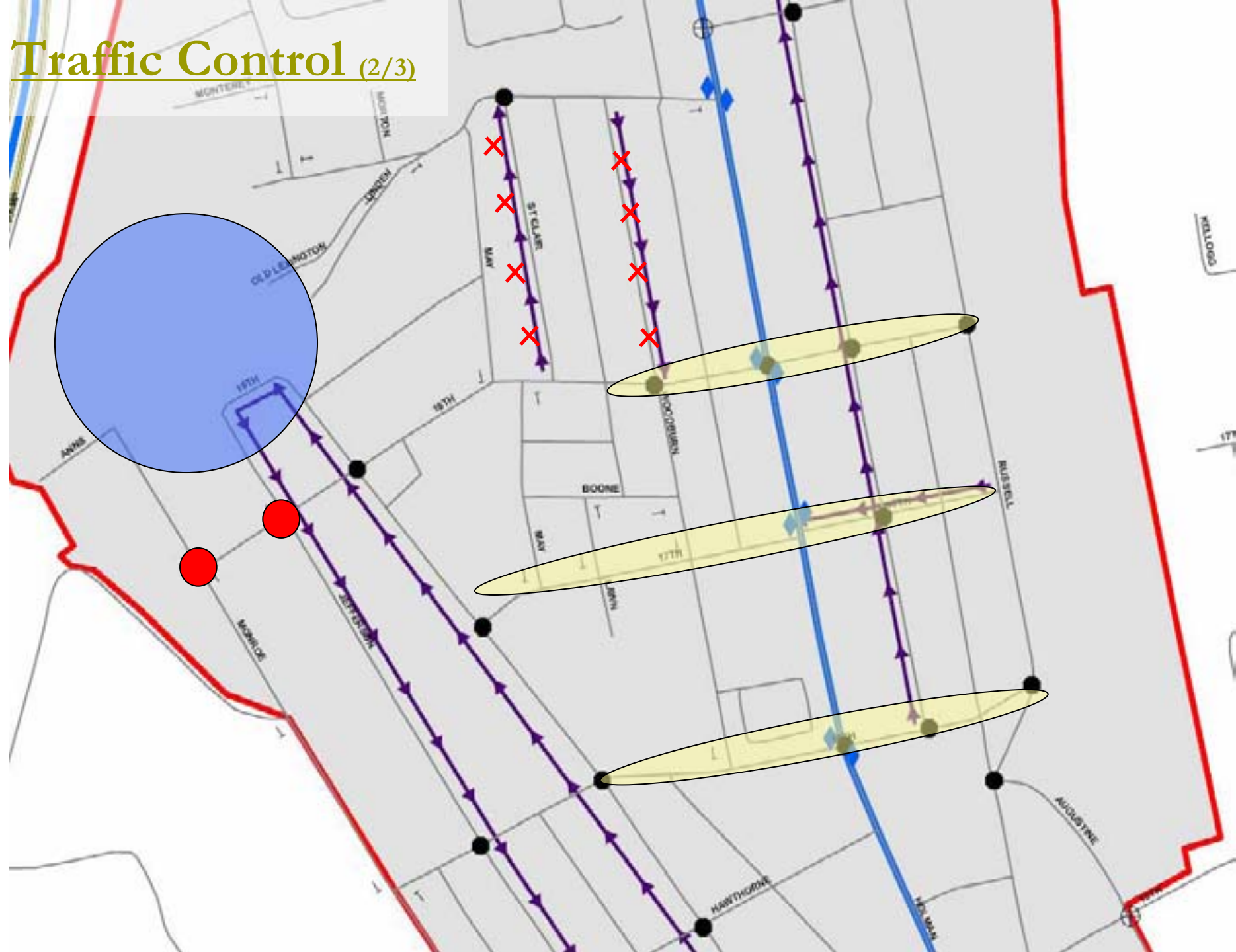
Transportation Systems



Traffic Control (1/3)



Traffic Control (2/3)



Traffic Control (2/3)



Other Recommendations

