

LINDEN GATEWAY SMALL AREA STUDY

Public Meeting #2
Thursday, April 17, 2008



City of Covington
NKAPC



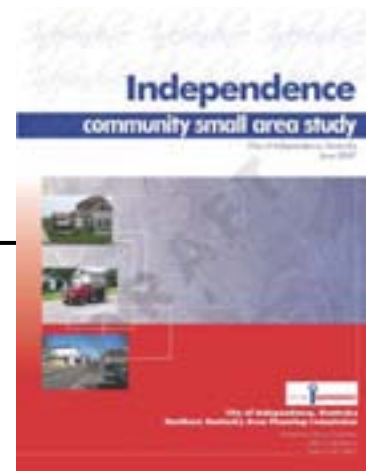
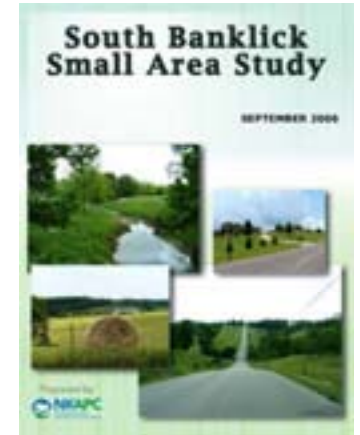
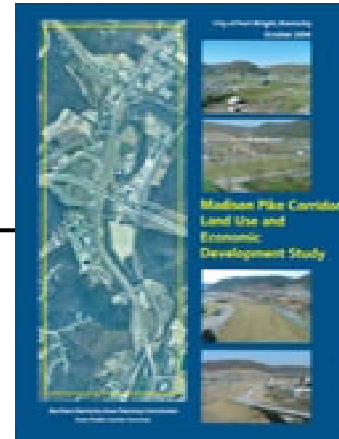
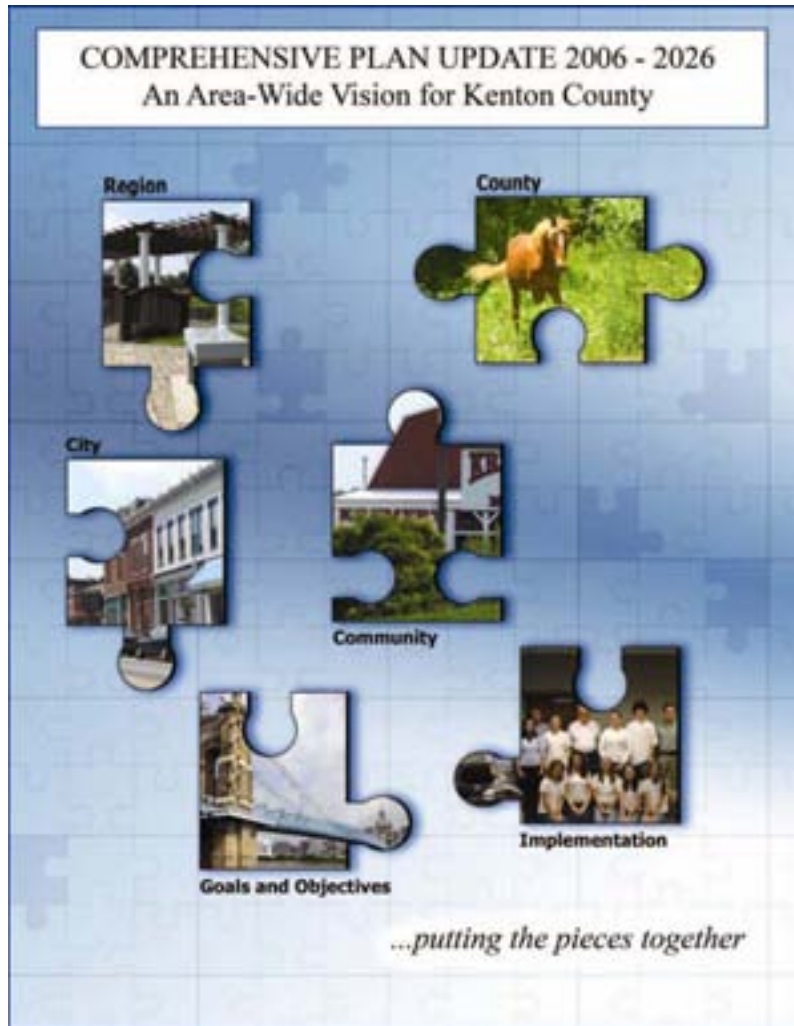
Linden Gateway Small Area Study

Meeting Outline

- Presentation of Recommendations **6:10-6:55**
 - Land Use
 - Historic Preservation
 - Parks
 - Green Infrastructure
 - Housing
 - Transportation
- Small Group Discussion & Questions **6:55-7:55**

Linden Gateway Small Area Study

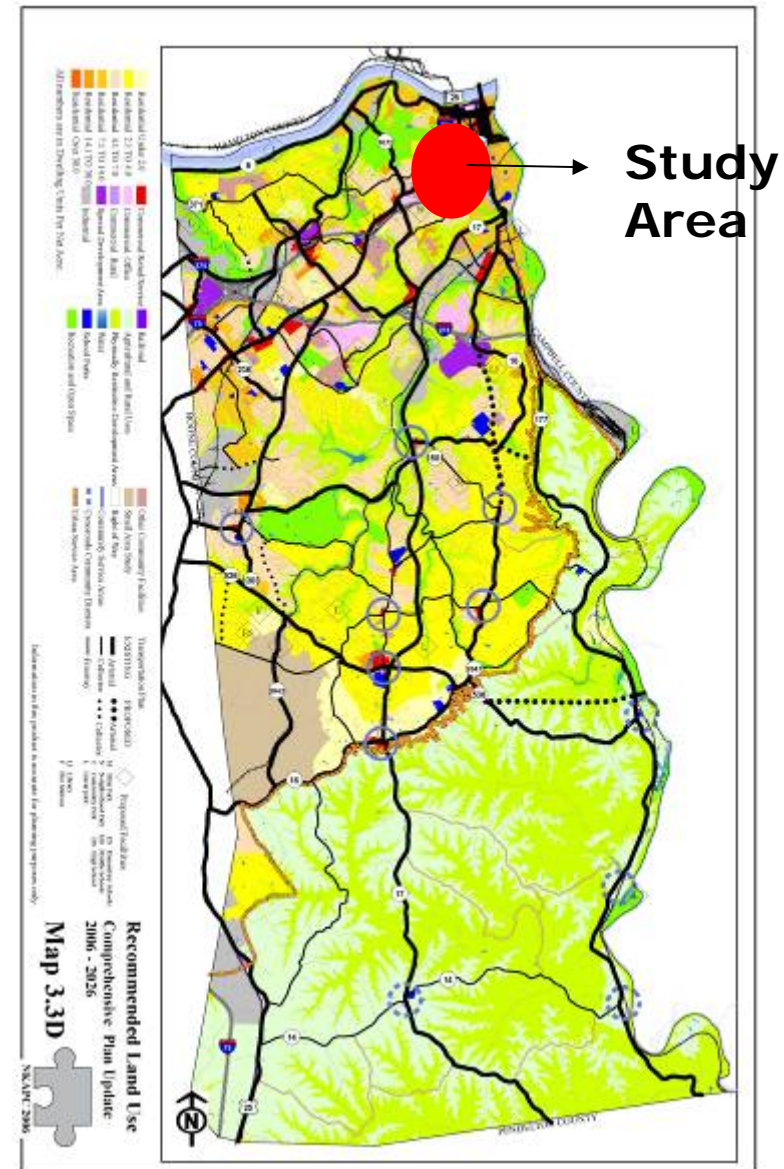
□ 2006 Kenton County Comprehensive Plan



**Linden Gateway
Small Area Study**

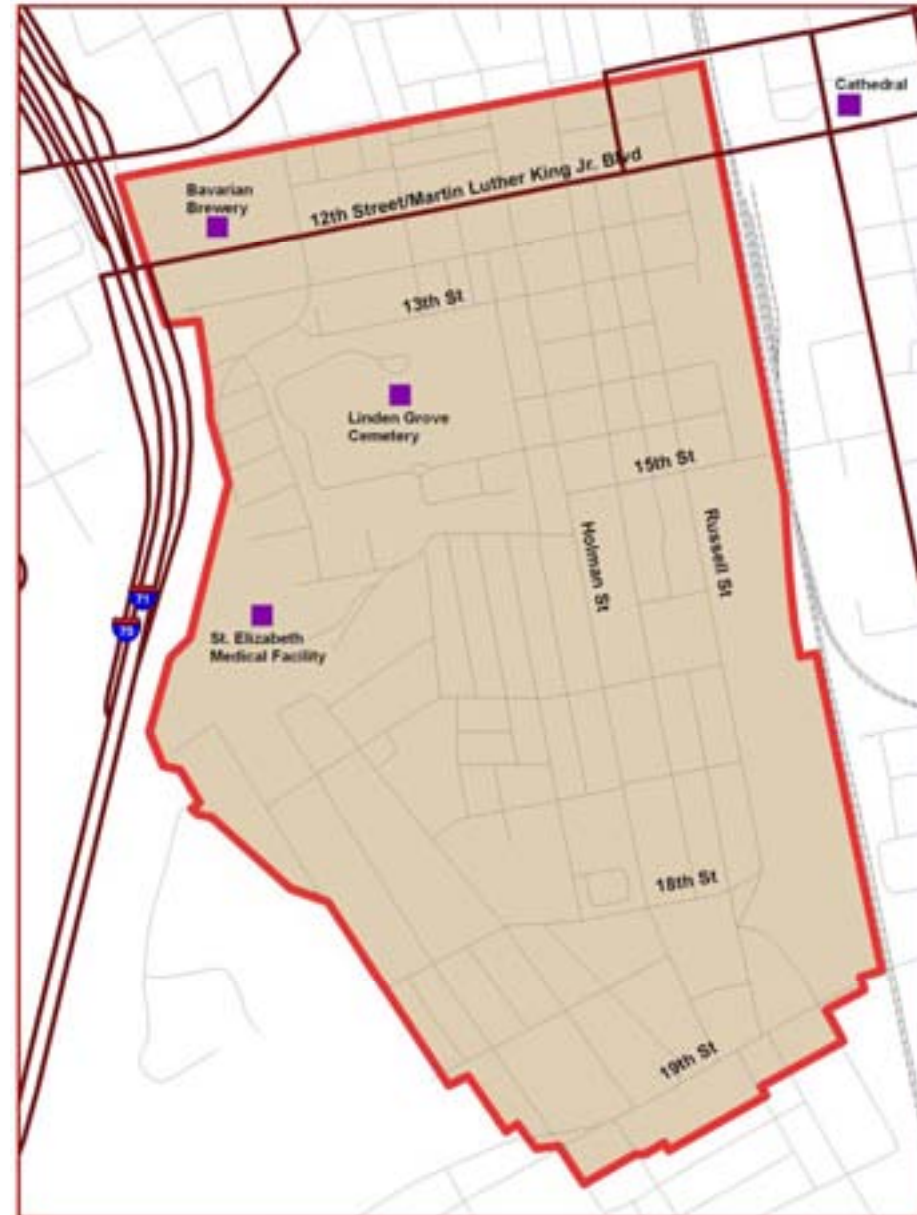
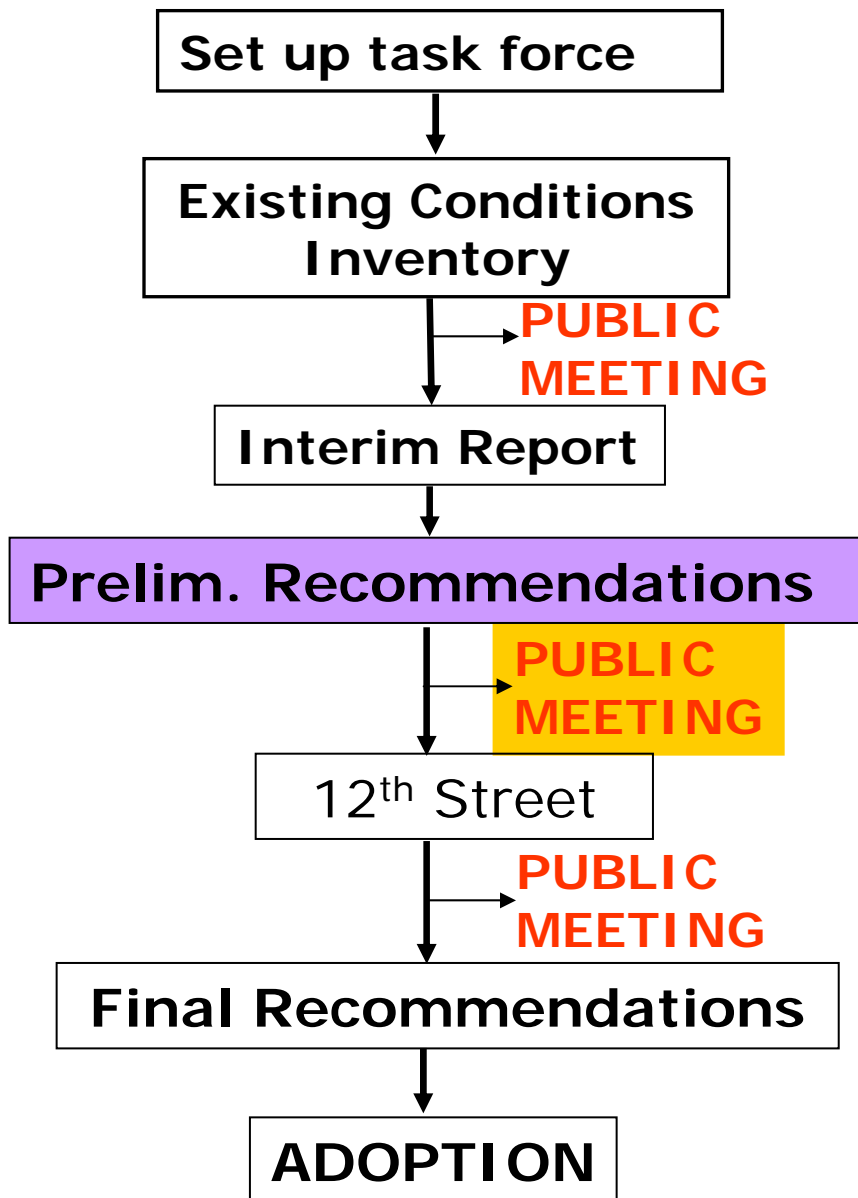
Linden Gateway Small Area Study

- 2006 Kenton County Comprehensive Plan
 - Land Use
 - Historic Preservation
 - Land Use
 - Transportation
 - Road classification
 - Congestion mitigation areas
 - Community Facilities
 - Schools
 - Police and Fire
 - Parks & Recreation
 - Environment
 - Watershed Planning
 - Green Infrastructure



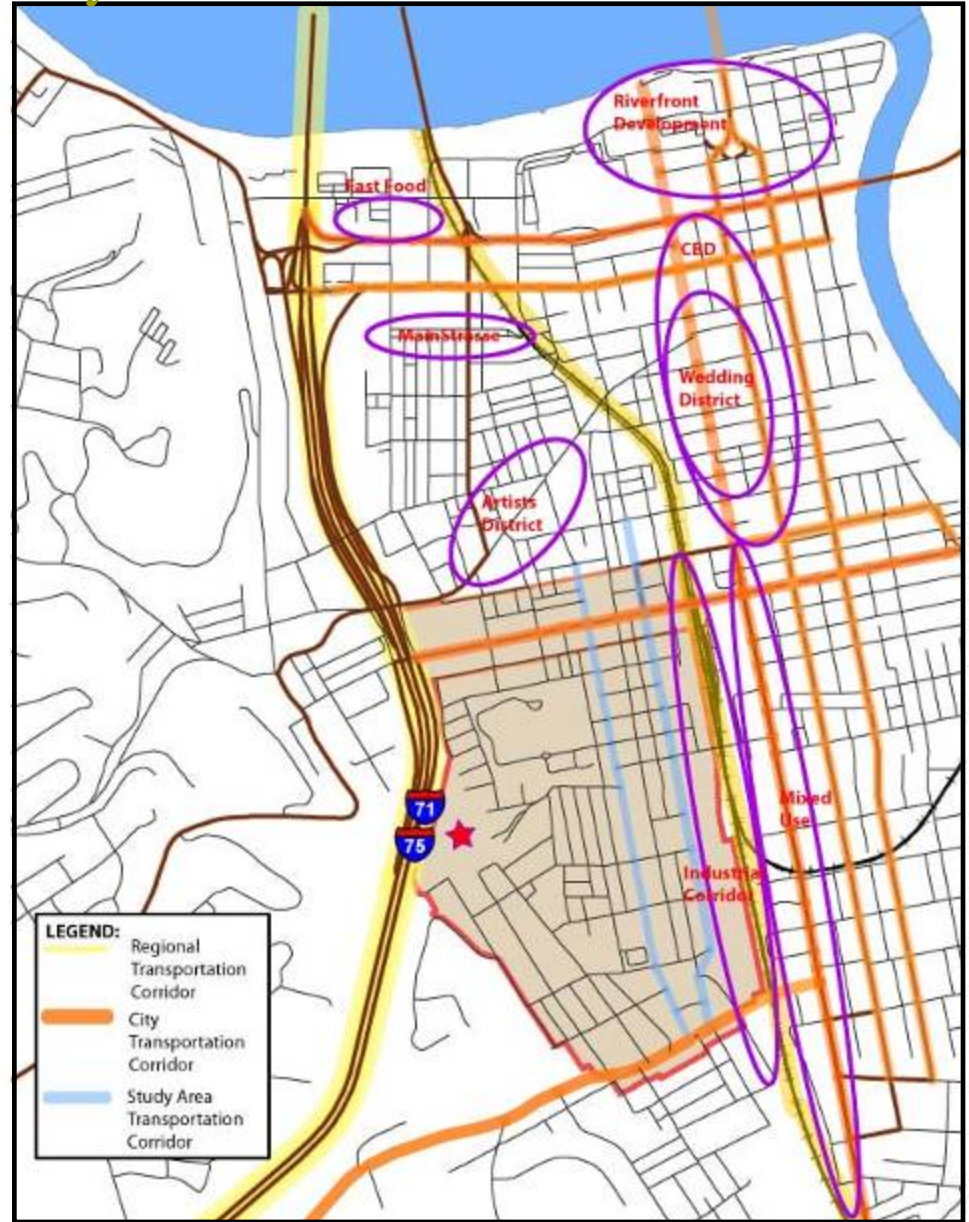
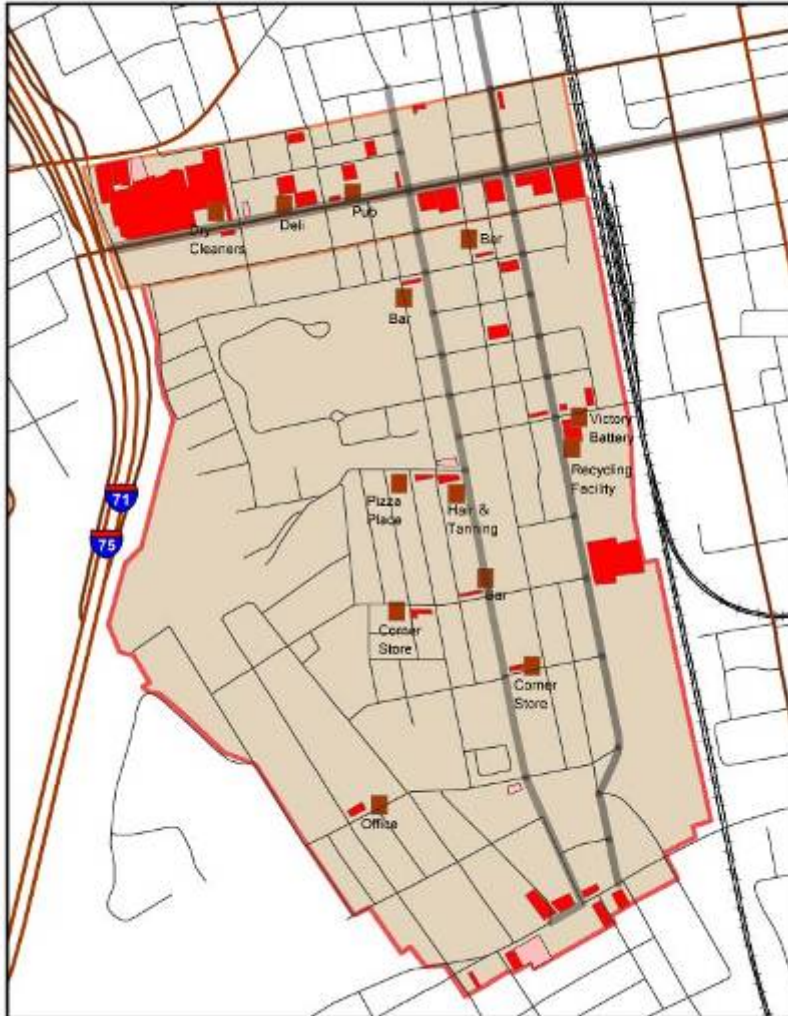
Linden Gateway Small Area Study

Study Area



Linden Gateway Small Area Study

Concept Plan




Linden Gateway Small Area Study

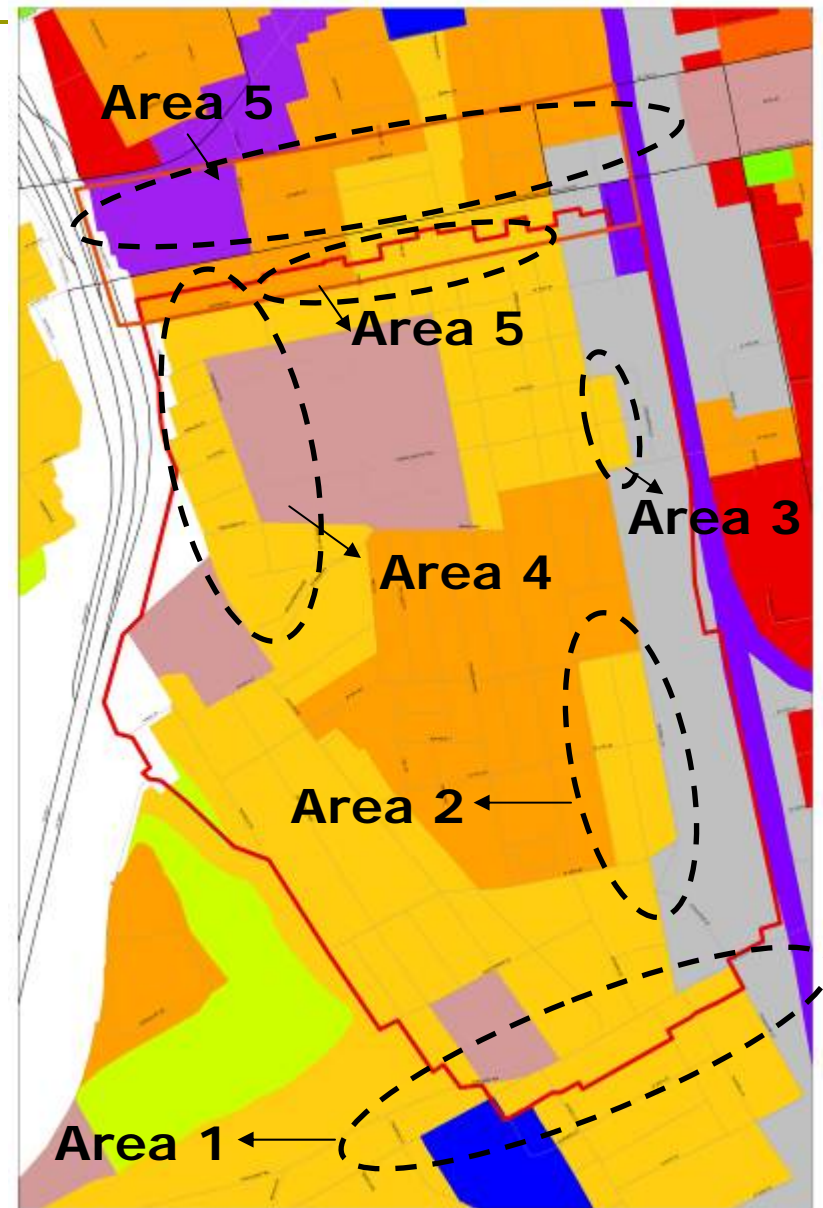
Land Use

RECOMMENDATIONS



Linden Gateway Small Area Study

- 2006 Kenton County Comprehensive Plan
- Residential:
 - 7.1 to 14.0 
 - 14.1 to 30.0 
- Community Facilities 
- Special Development Area 
- Industrial 



Linden Gateway Small Area Study – Land Use

AREA 1



Linden Gateway Small Area Study – Land Use

AREA 2



Linden Gateway Small Area Study – Land Use

AREA 3



Linden Gateway Small Area Study – Land Use

AREA 4

2006 Comp Plan



Existing Uses



Linden Gateway Small Area Study – Land Use

AREA 4

2006 Comp Plan



Recommended Change



Linden Gateway Small Area Study – Land Use

AREA 4

2006 Comp Plan



Existing Uses



Linden Gateway Small Area Study – Land Use

AREA 4

2006 Comp Plan



Recommendation



Linden Gateway Small Area Study – Land Use

AREA 5

2006 Comp Plan



Linden Gateway Small Area Study – Land Use

AREA 5

Recommended Change



Linden Gateway Small Area Study

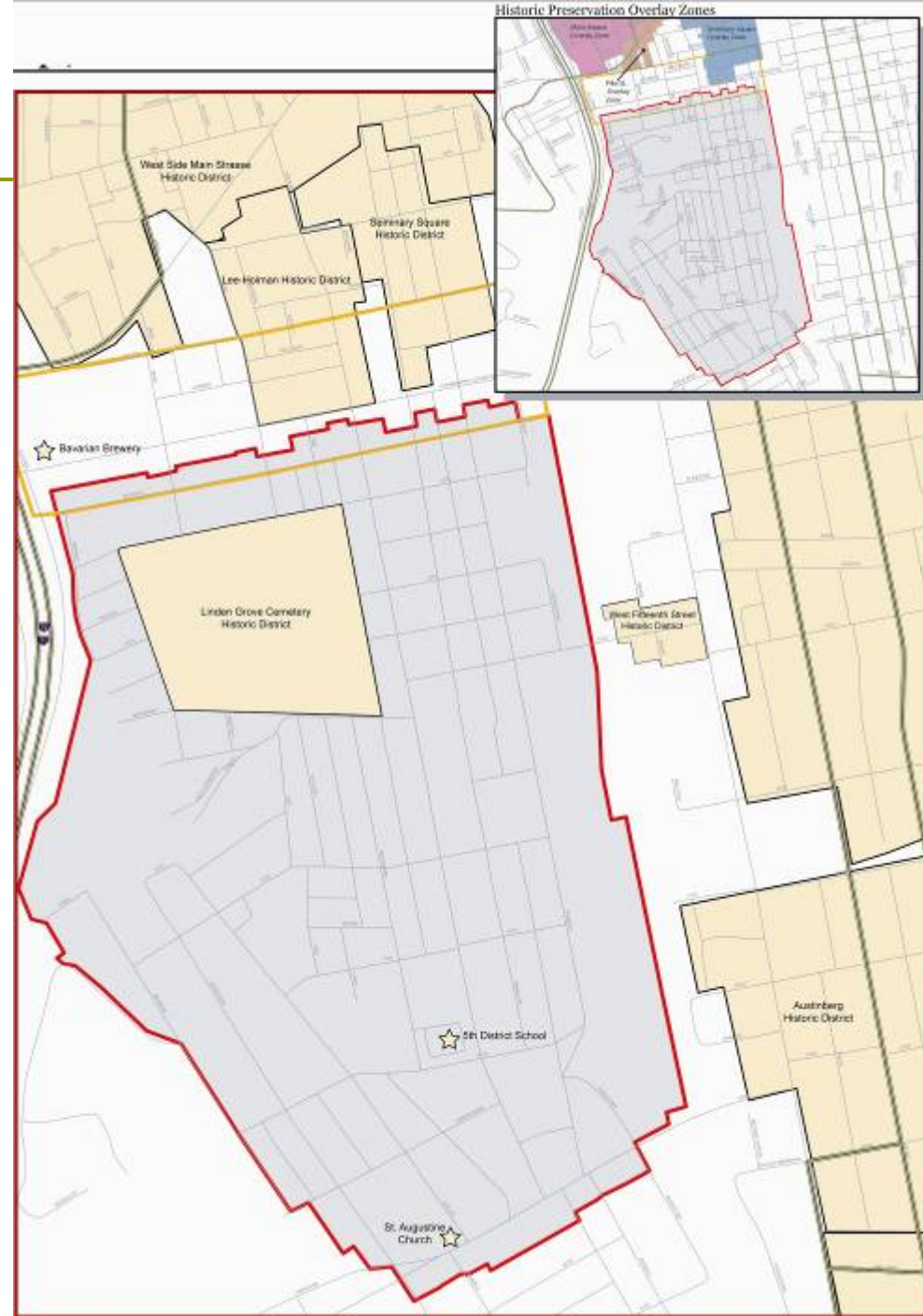
Historic Preservation

RECOMMENDATIONS



Linden Gateway Small Area Study – Historic Preservation

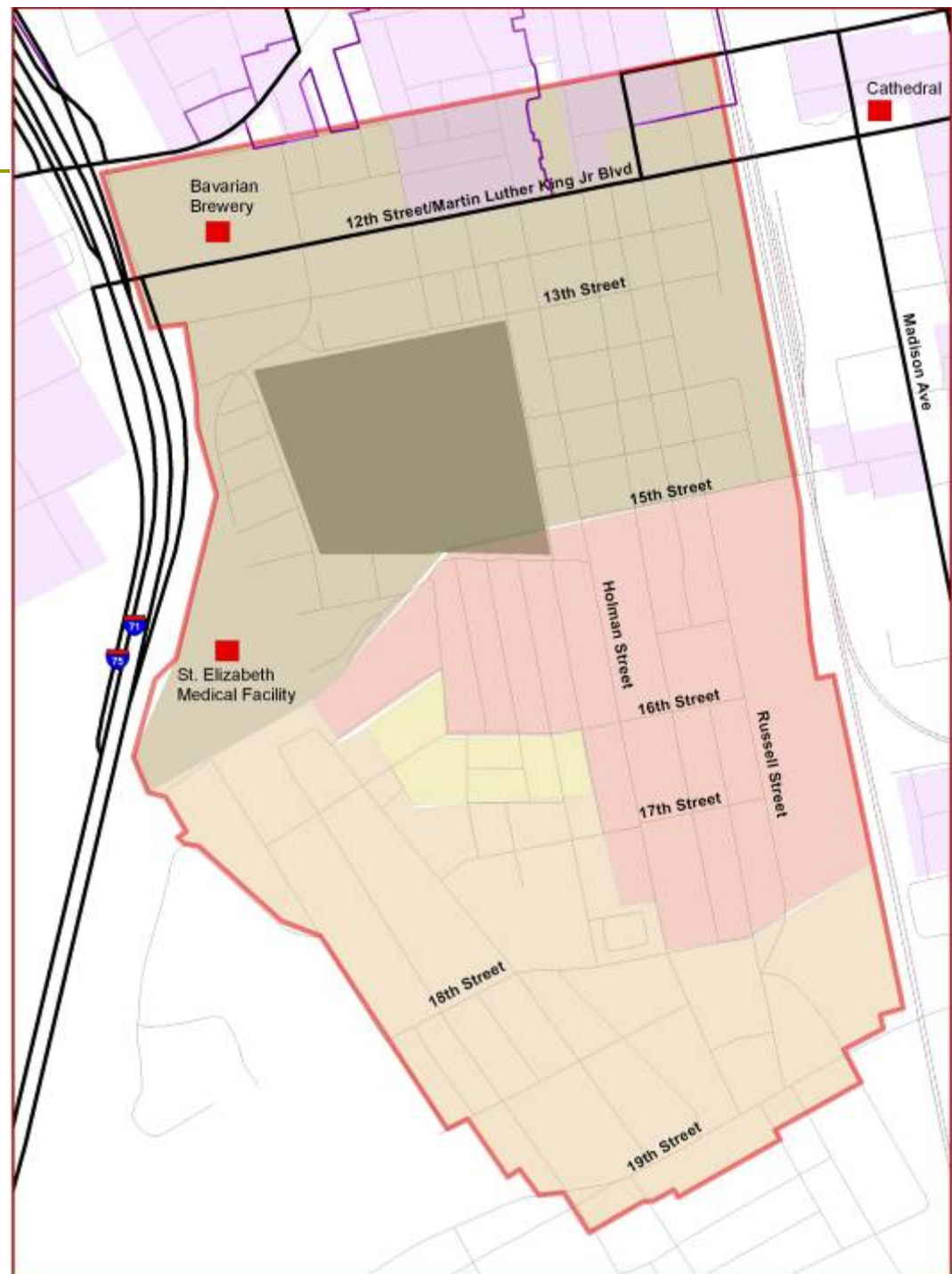
- National Register of Historic Places
- Local Historic Preservation Overlay Zones



Linden Gateway Small Area Study - Historic Preservation

Recommendation:

- The whole area is eligible for the National Register as a District (s)
- Survey done in phases
- Development of the area was in progression from North to South
- Subdivisions and the street pattern



Linden Gateway Small Area Study

Parks & Recreation

RECOMMENDATIONS



Linden Gateway Small Area Study Parks and Recreation

Existing Parks Inventory

□ Neighborhood

Parks:

- John G. Carlisle Elementary
- Glen O. Swing Elementary

□ Mini Parks:

- Col. Justin Sims Memorial Park

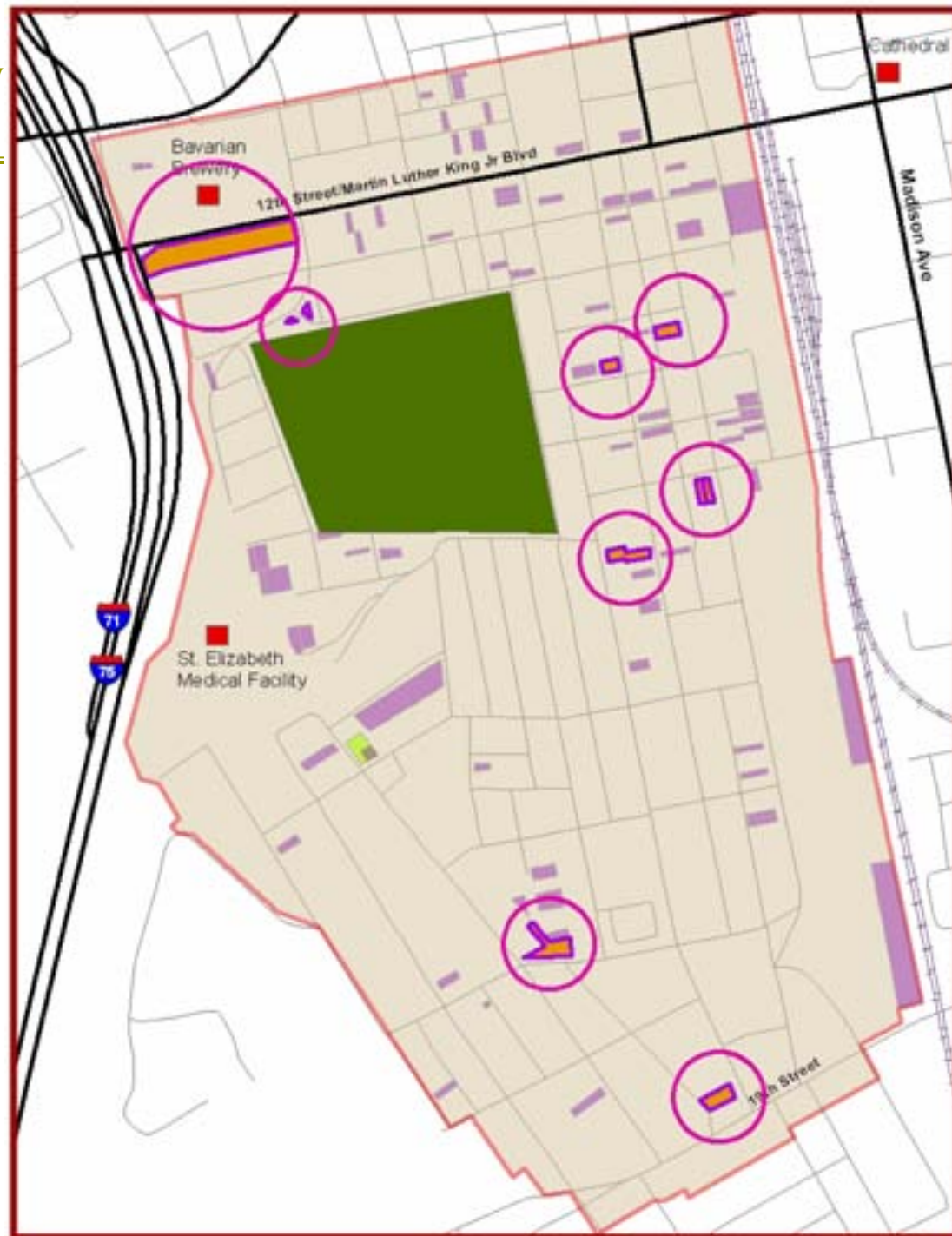


Linden Gateway Small Area Study Parks and Recreation

Opportunity Sites

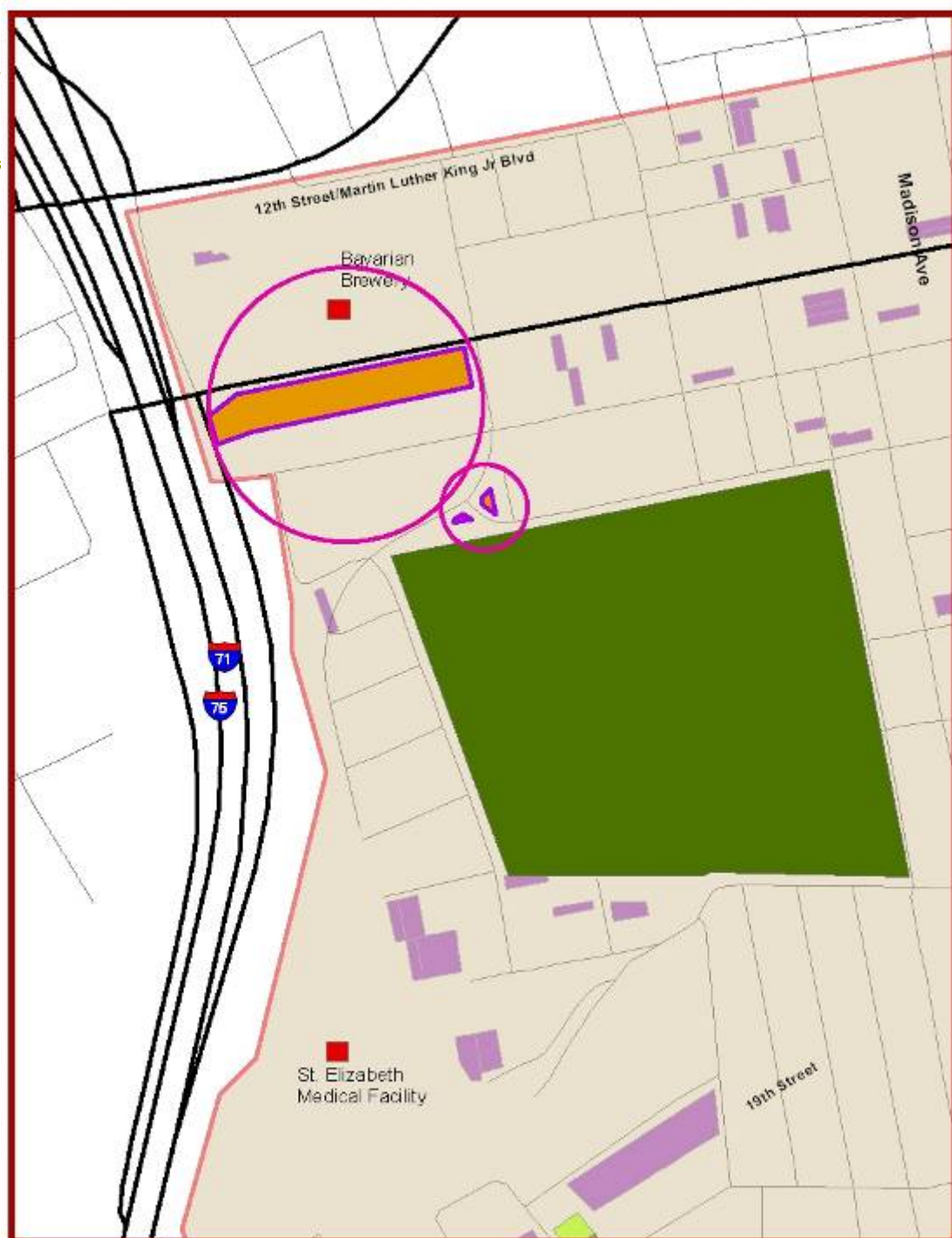
8 Sites

- Gateway
- Community Garden
- New Park
- Existing Park



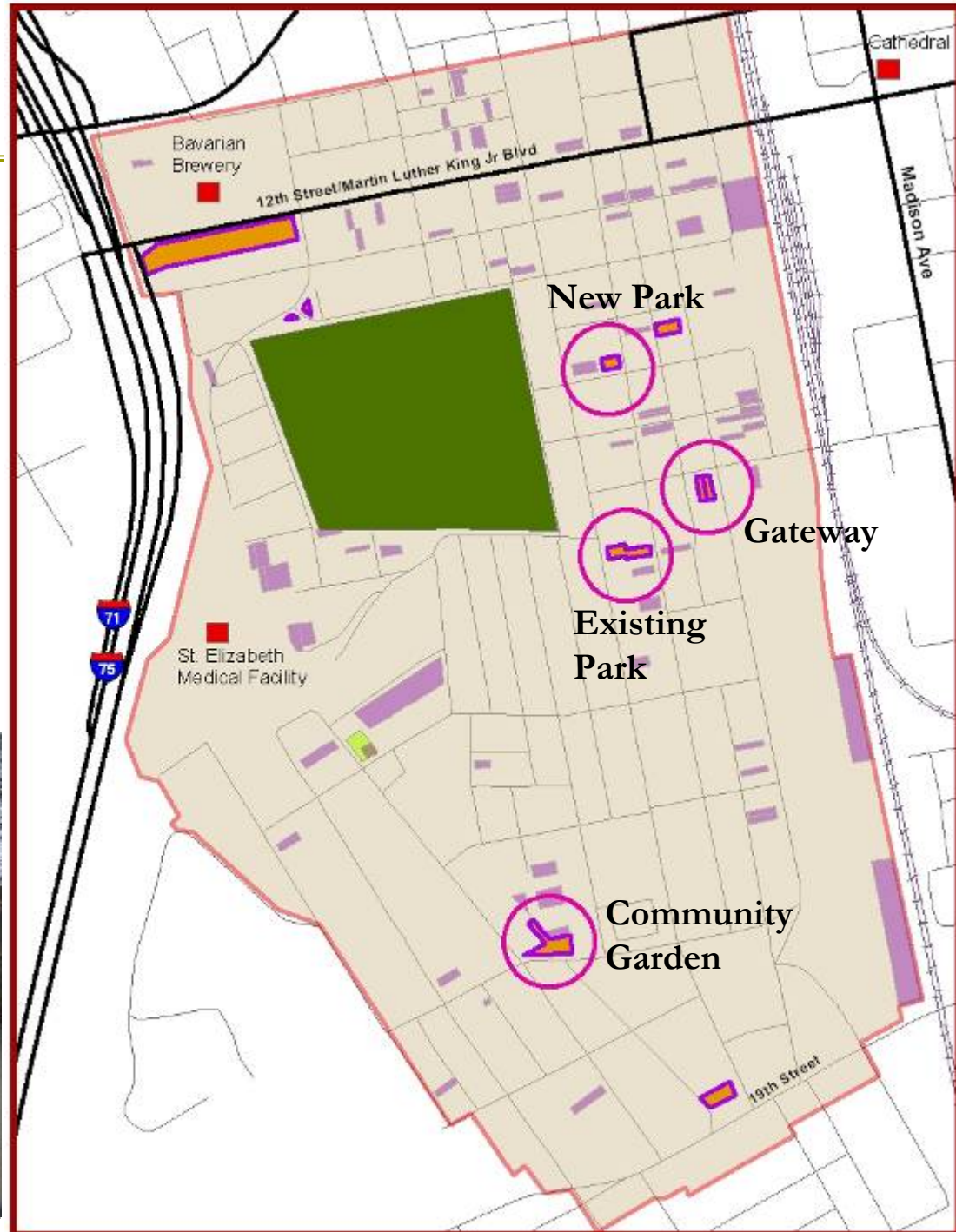
Linden Gateway Small Area Study Parks and Recreation

Opportunity Sites - General



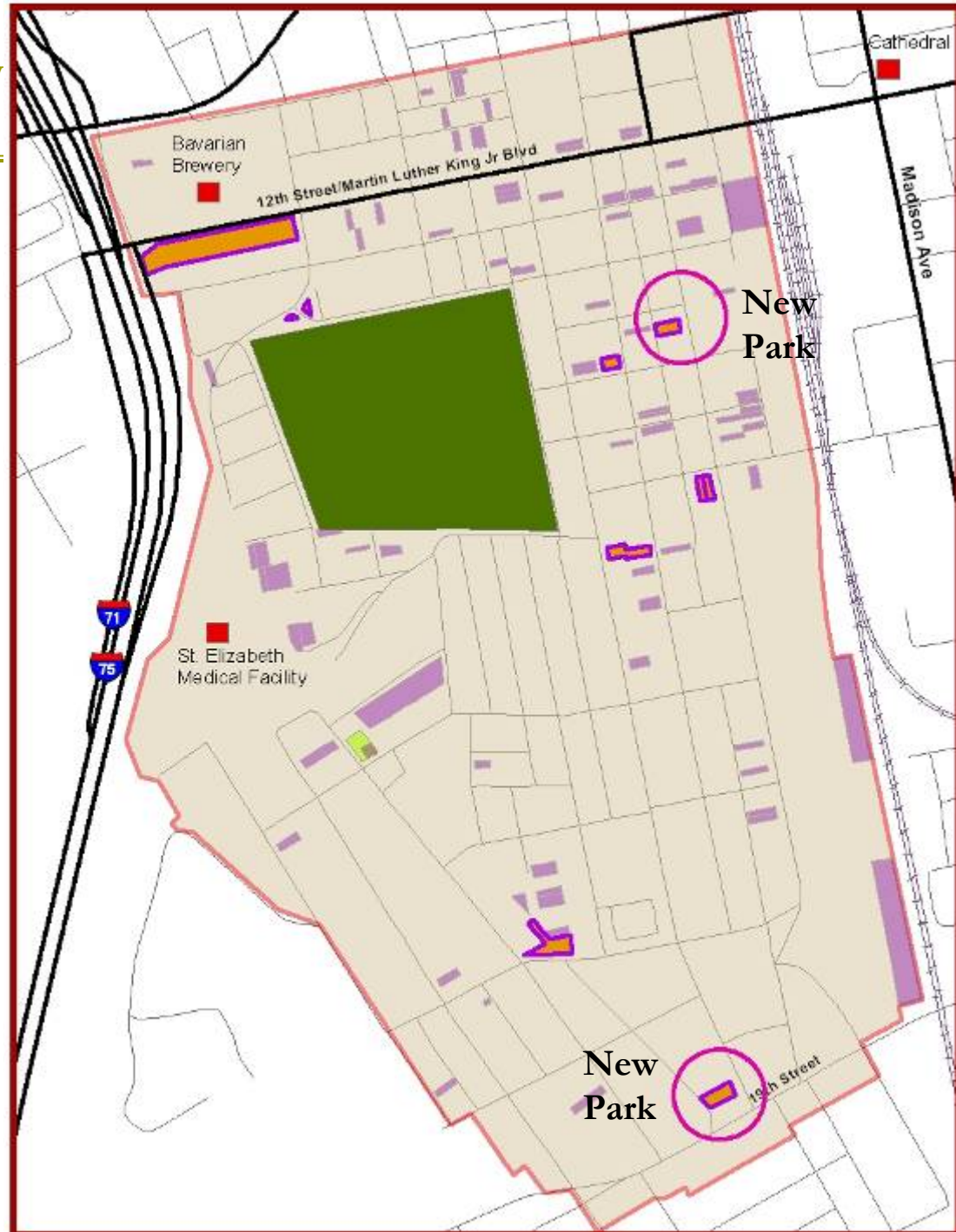
Linden Gateway Small Area Study Parks and Recreation

Opportunity Sites – First Priority



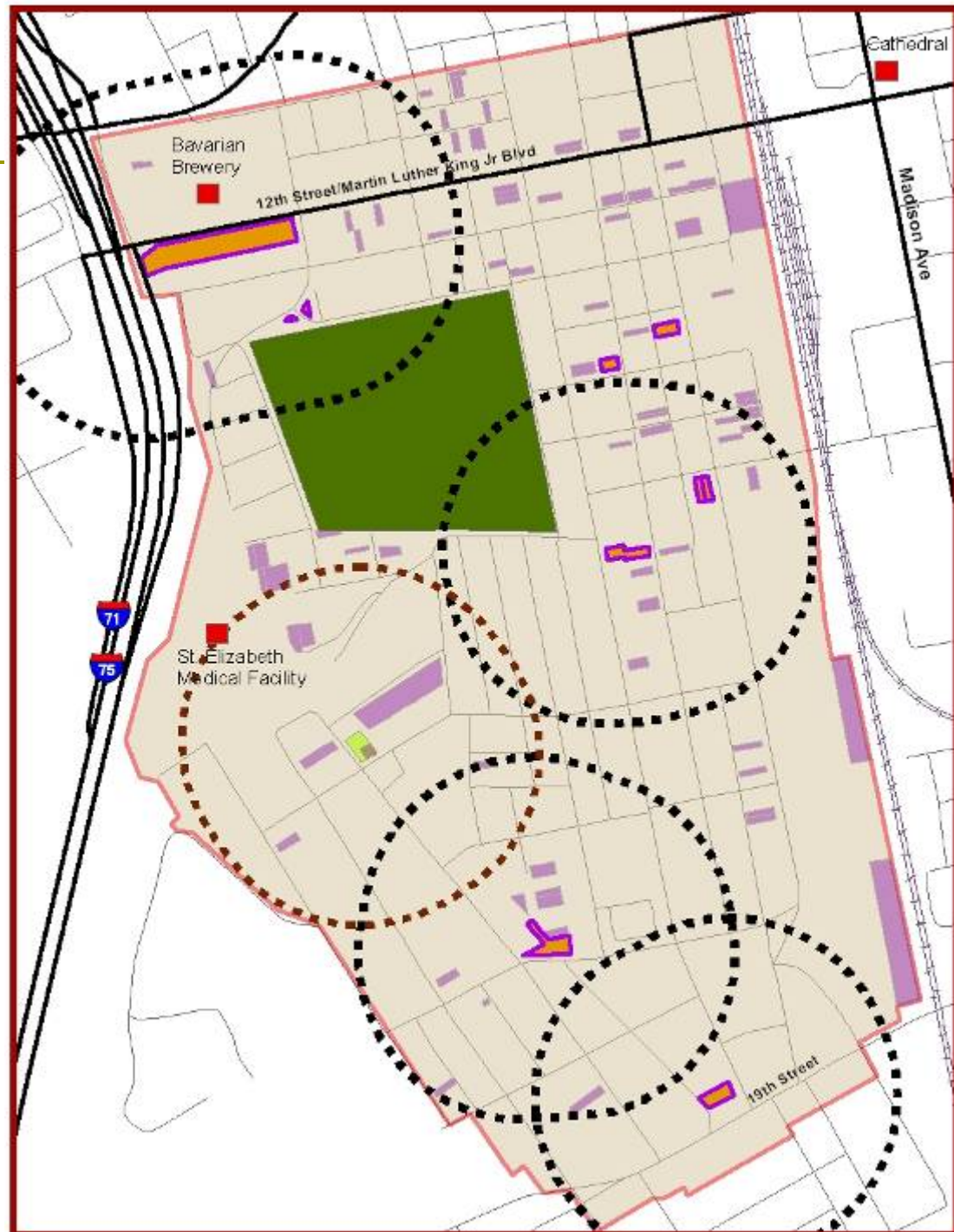
Linden Gateway Small Area Study Parks and Recreation

Opportunity Sites – Second Priority



Linden Gateway Small Area Study – Parks and Recreation

Service Area



Linden Gateway Small Area Study

Green Infrastructure

RECOMMENDATIONS



Linden Gateway Small Area Study – Green Infrastructure

Green Infrastructure: 2006 Comprehensive Plan

“a network of vegetated or non-paved area (s) that sustains the diversity and quality of natural systems and that contribute to the health, economic vitality, and quality of life for communities and people”.

A primary component therefore, is to connect across multiple landscapes a network of protected land and water that supports native species, provides recreational and open space uses, and maintains the natural ecological processes

Linden Gateway Small Area Study – Green Infrastructure

Ongoing Efforts: 12th Street Project

Covington 12th Street Green Gateway Concept



1 WALL REMNANT



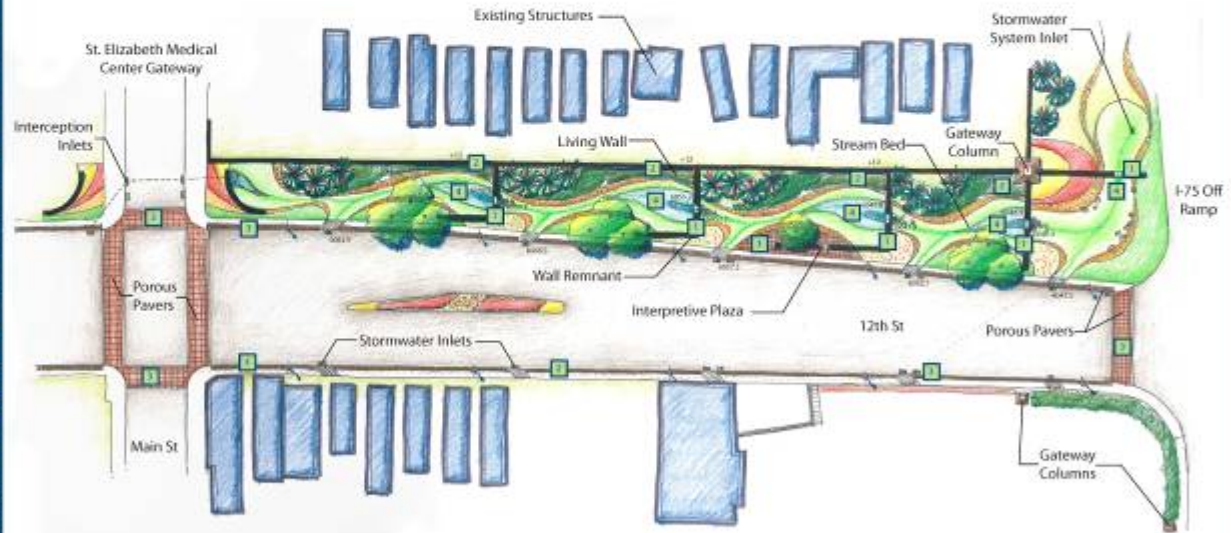
2 LIVING WALL



3 POROUS PAVERS



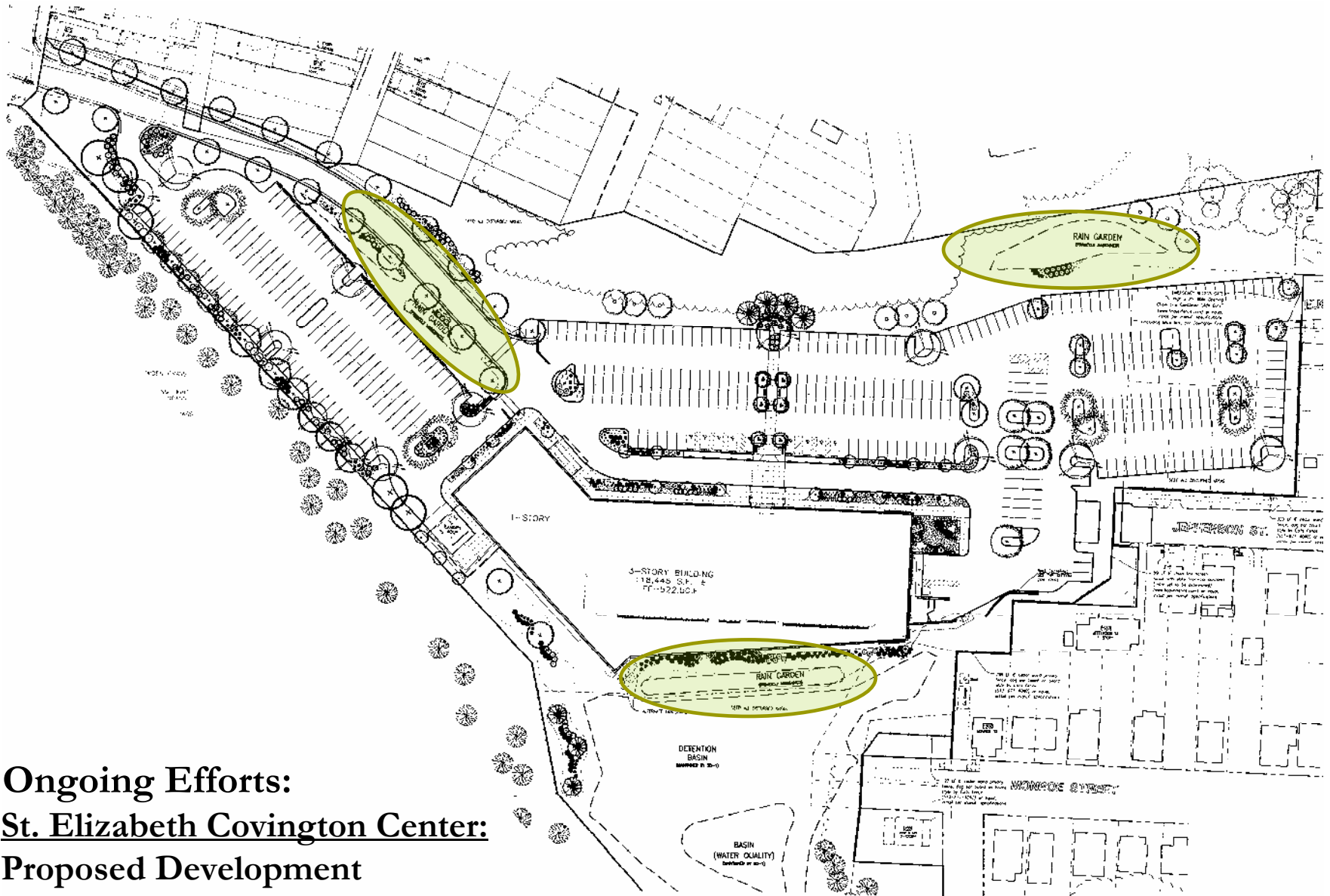
4 STORMWATER FILTRATION STORAGE CELL



Sanitation District NO.1



Linden Gateway Small Area Study – Green Infrastructure



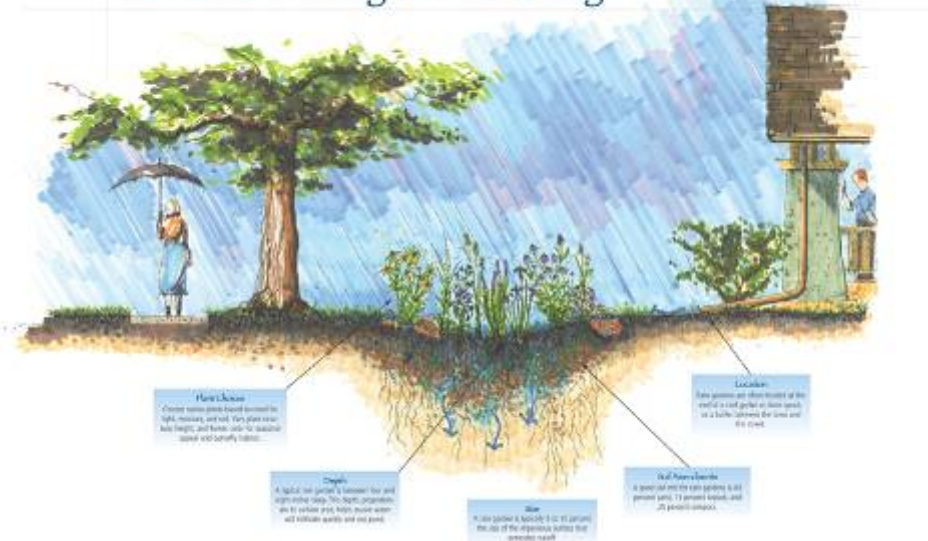
Ongoing Efforts:
St. Elizabeth Covington Center:
Proposed Development

Linden Gateway Small Area Study – Green Infrastructure

Rain Garden

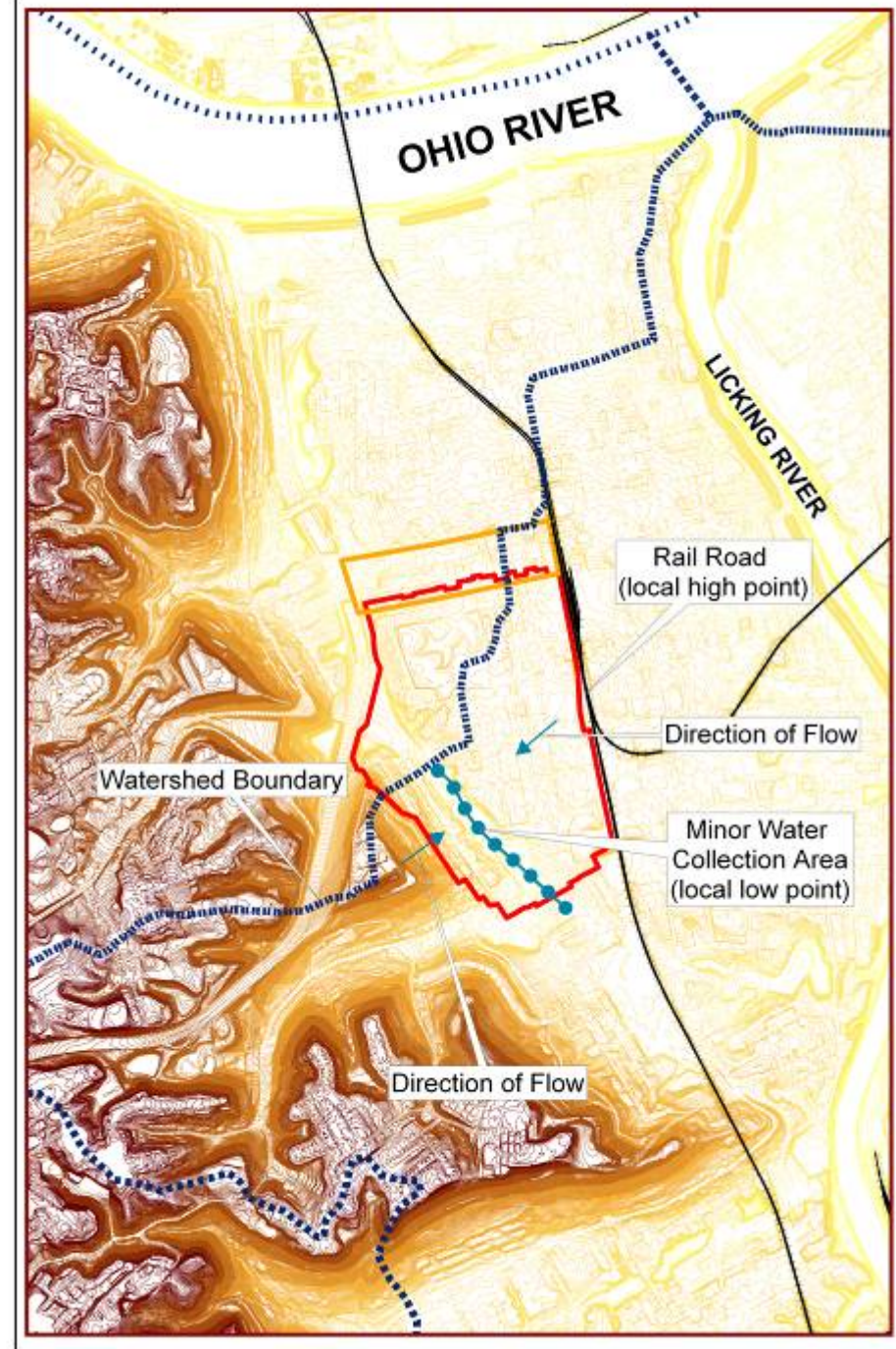
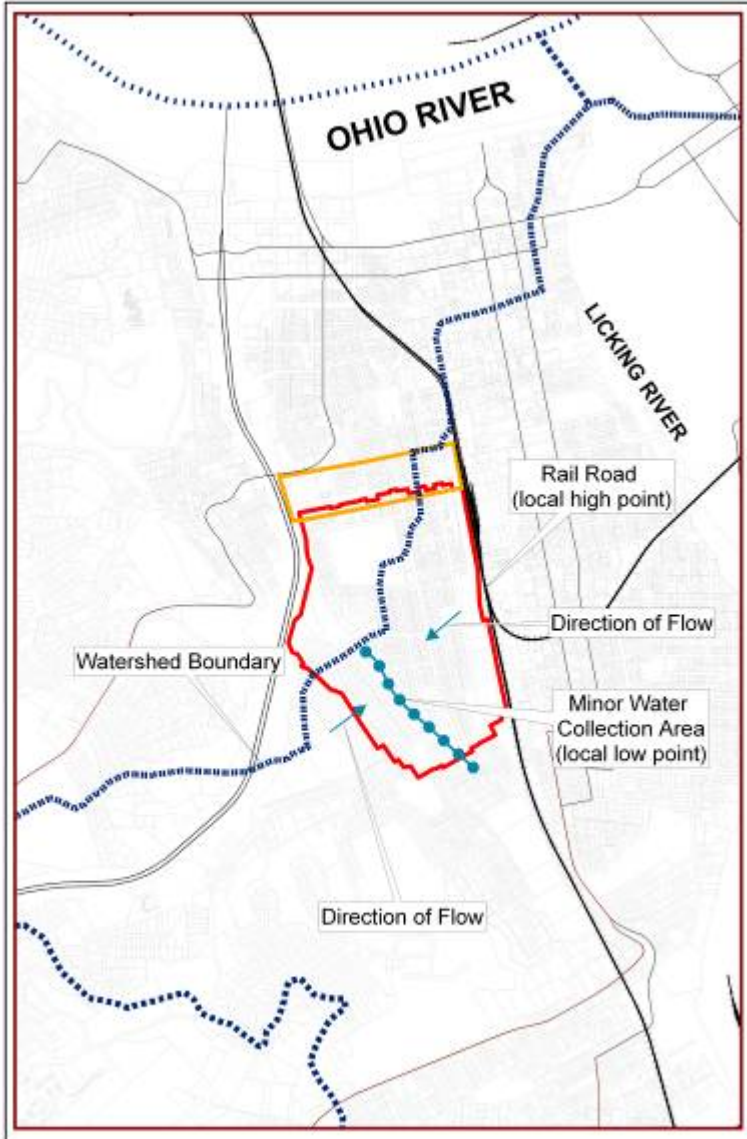


Rain Garden in a neighborhood setting

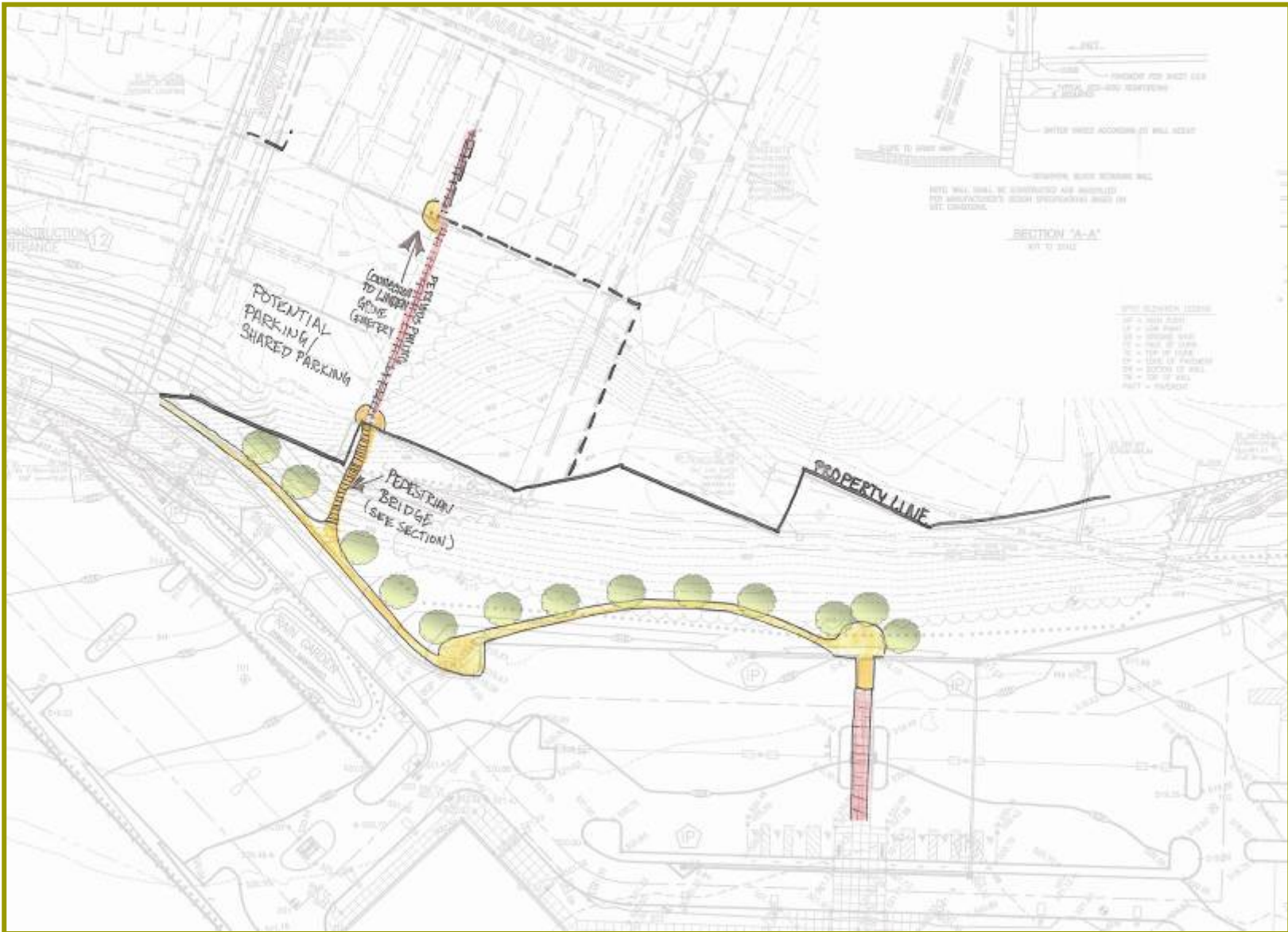


Linden Gateway Small Area Study – Green Infrastructure

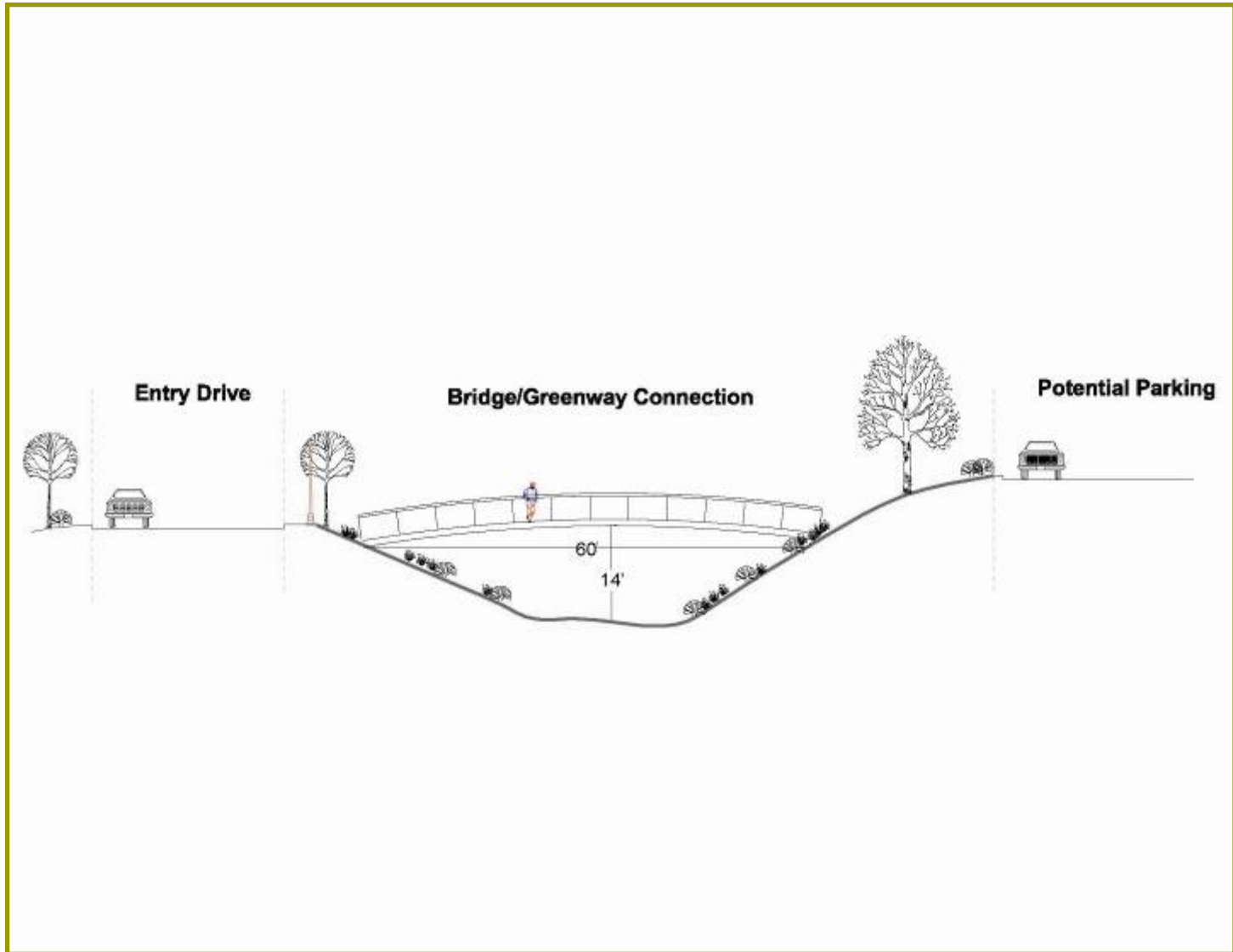
Topographic Analysis:



Linden Gateway Small Area Study – Green Infrastructure



Linden Gateway Small Area Study – Green Infrastructure



Linden Gateway Small Area Study

Housing

RECOMMENDATIONS



Linden Gateway Small Area Study – Housing

- ❑ Residences make up over **80%** of structures
 - ❑ **Owner occupied: 51%**
 - ❑ **Renter occupied: 49%**
- ❑ **90%** of structures in good condition or need only minor repairs
- ❑ **15.91%** household poverty, Kenton County – 9%
- ❑ Median Income - **\$28,600**, Kenton County - \$43,906

**HUD Recommends 66%
Home Ownership**

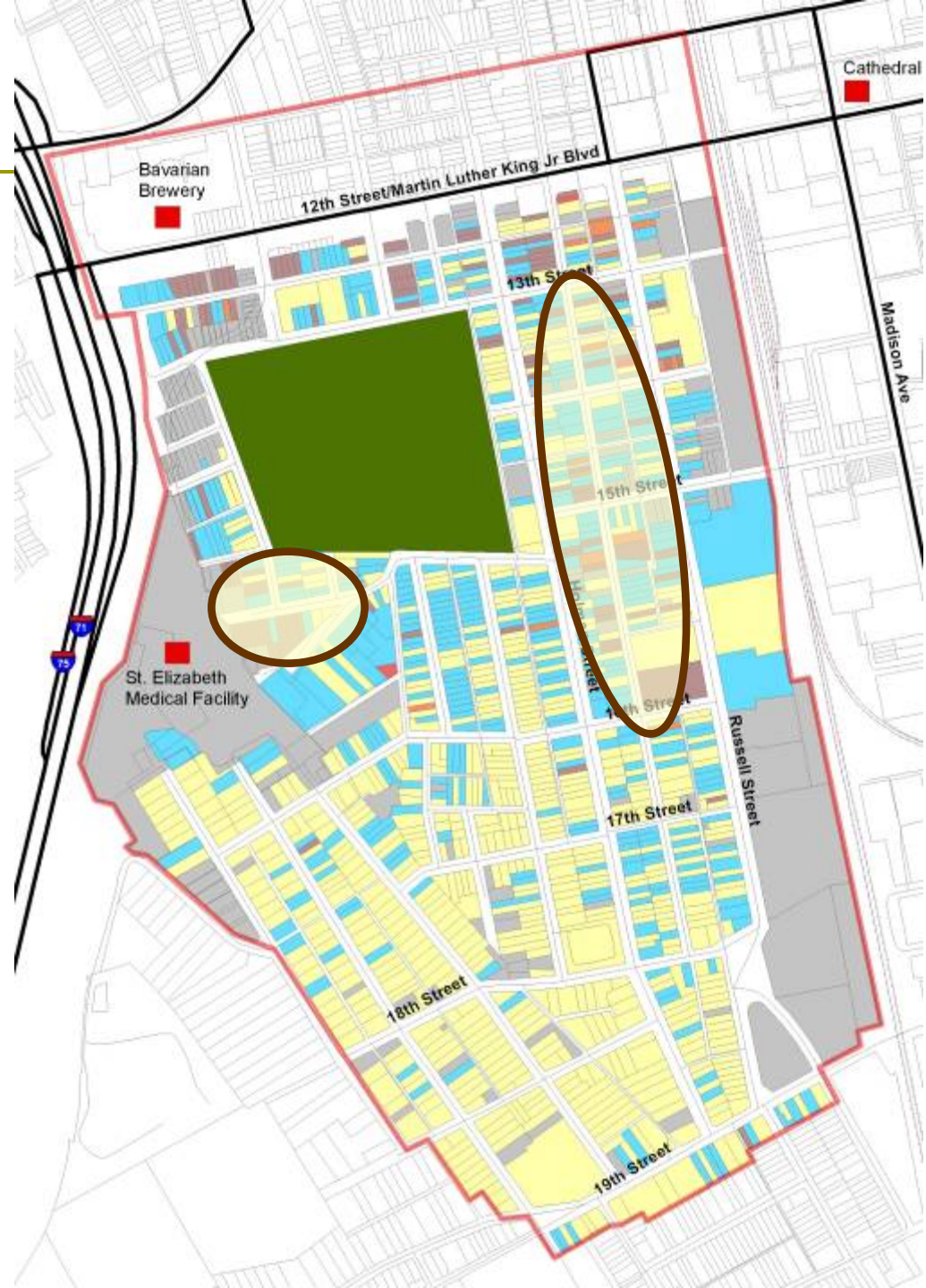
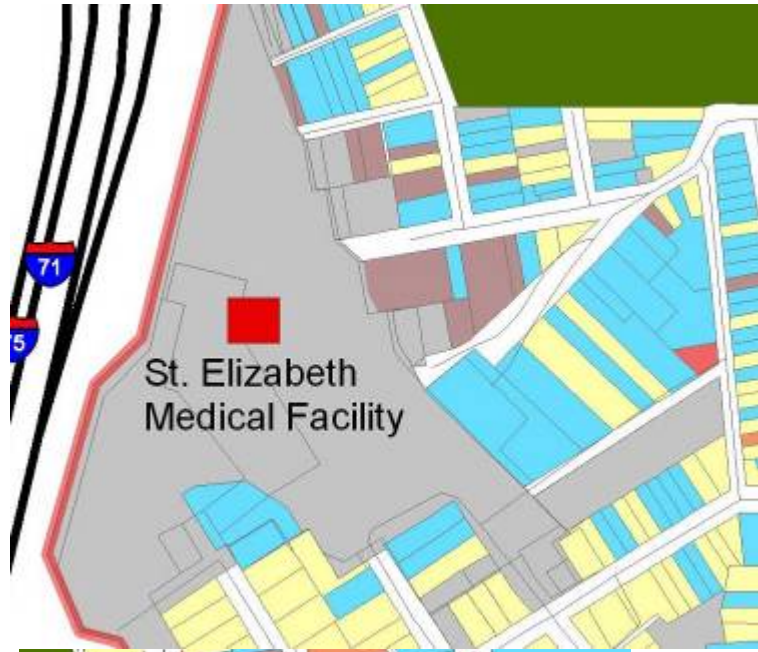


Linden Gateway Small Area Study - Housing

- Increase Awareness of existing programs
 - Educate community on sound homeownership practices
 - Support government measures that help residents become homeowners
- Encourage Homeownership
 - Increase participation in existing homeownership programs
 - Employer assisted housing programs
- Improve Existing Structures
 - Targeted code enforcement programs
 - Home improvement assistance program

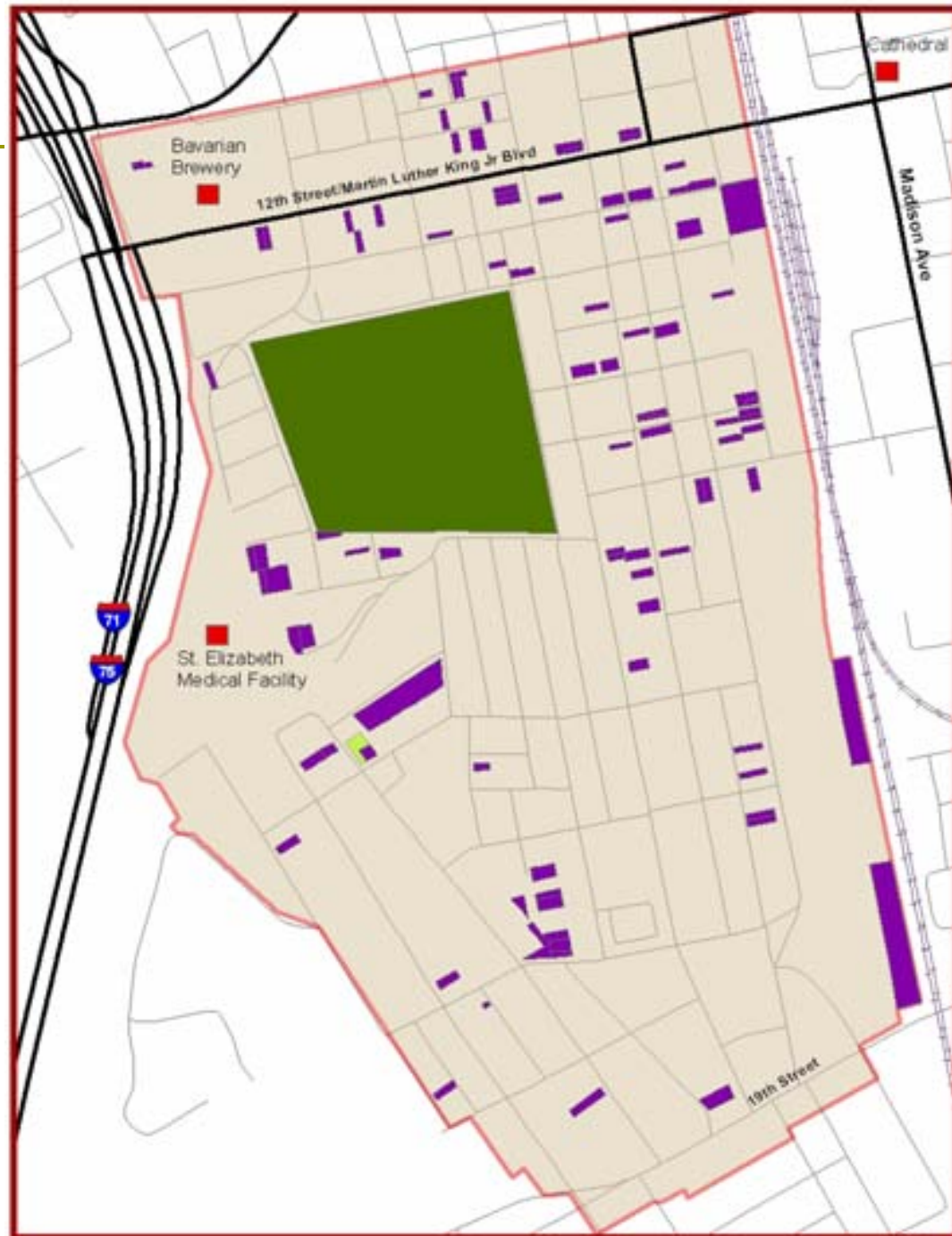
Linden Gateway Small Area Study - Housing

Building Conditions



Linden Gateway Small Area Study - Housing

Infill Housing



Linden Gateway Small Area Study

Transportation

RECOMMENDATIONS



Linden Gateway Small Area Study - Transportation

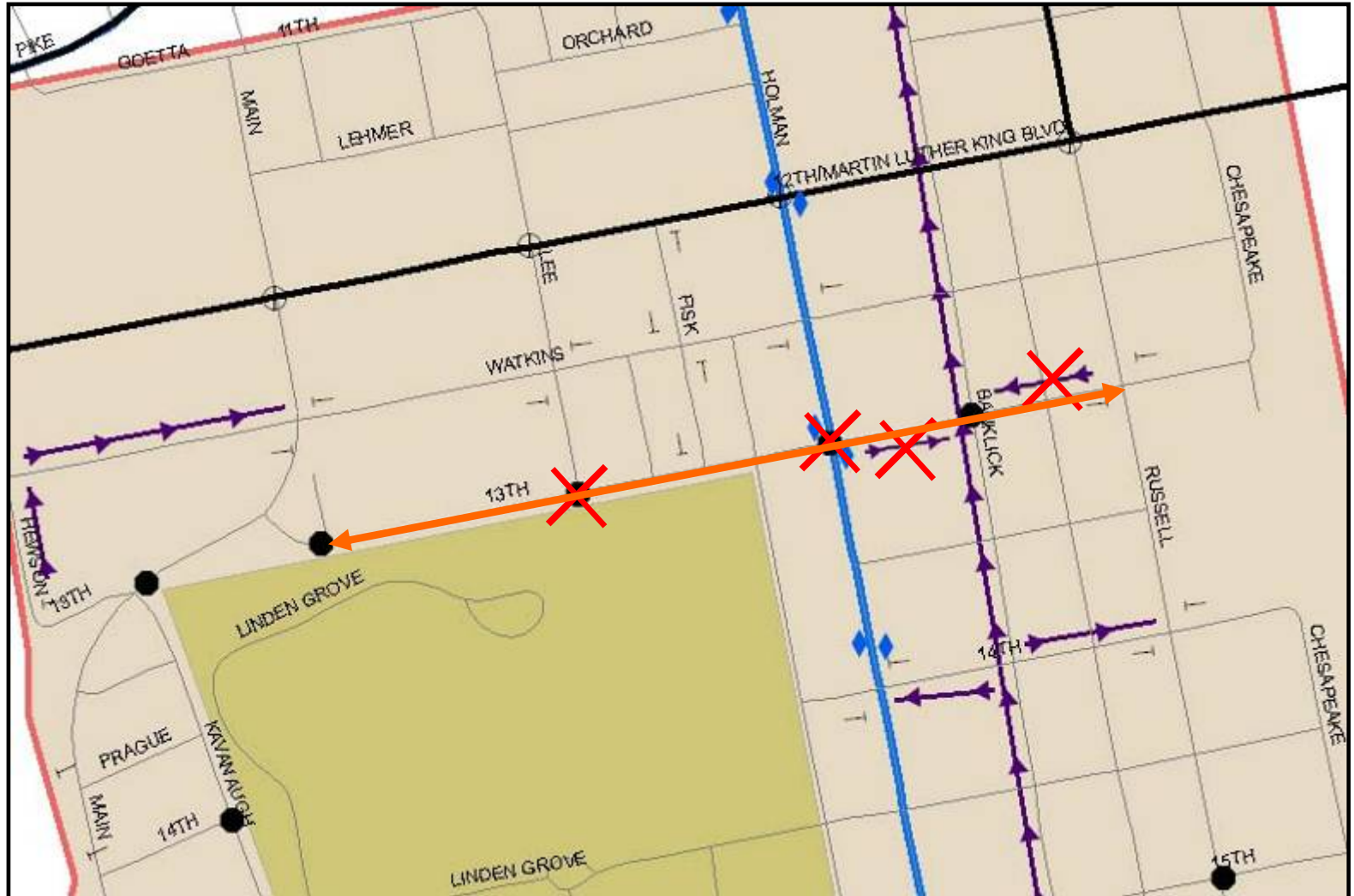
□ Existing Conditions

- 12th Street Widening
 - Average 15 feet wide median
 - Parking on both sides of street
 - 2 travel lanes of each side
 - Traffic light at Main and Russell Streets
- Closing of 15th Street Bridge
- East-west connectivity
- One-way street configurations
- High density development with relatively limited right of way
- TANK Bus access

Linden Gateway Small Area Study - Transportation

□ Short-Term Recommendations

Improve east-west connectivity: 13th Street



Linden Gateway Small Area Study - Transportation

□ Short-Term Recommendations

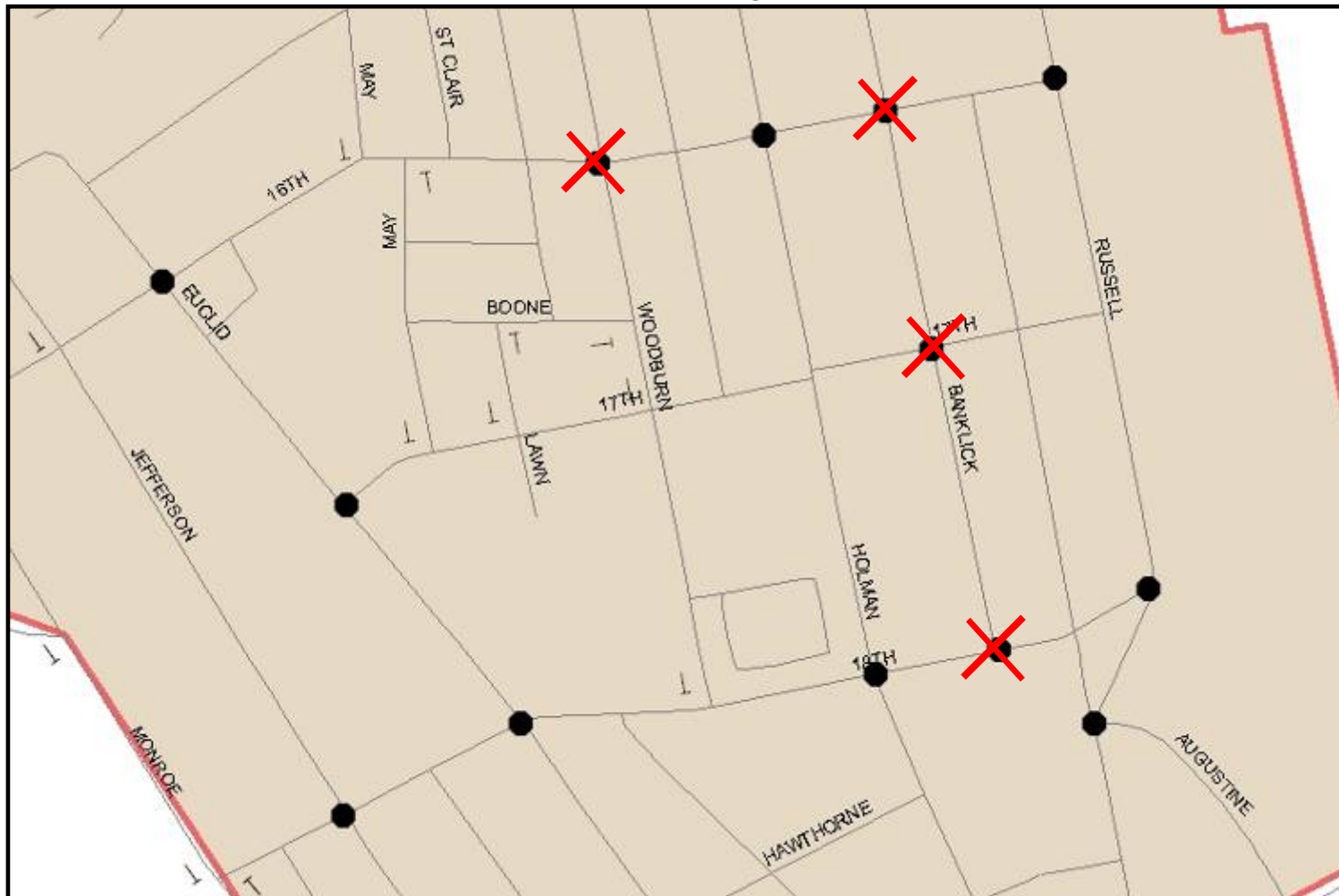
Improve east-west connectivity: Watkins Street



Linden Gateway Small Area Study - Transportation

□ Short-Term Recommendations

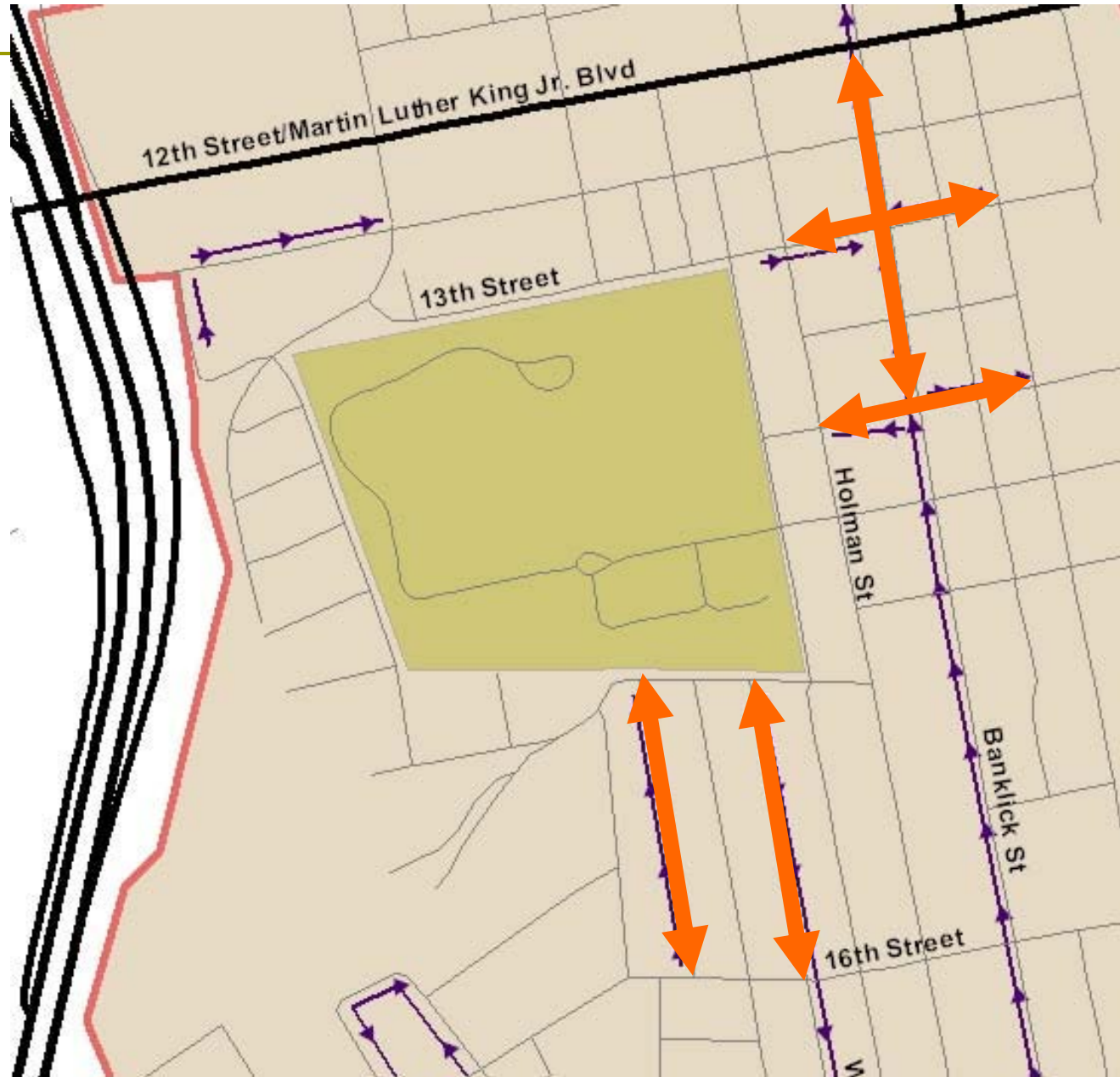
Improve east-west connectivity: Southern portion



Linden Gateway Small Area Study

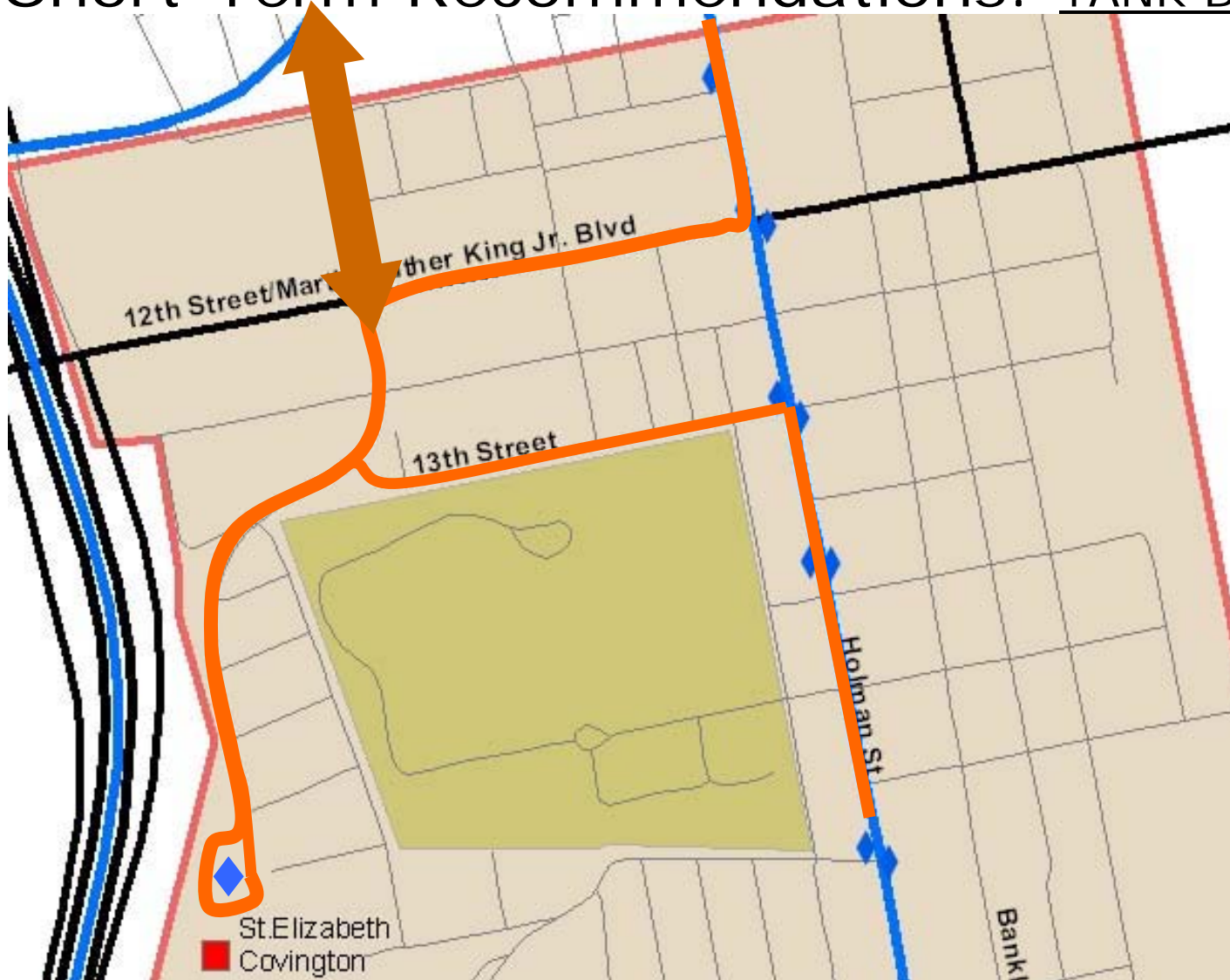
- Transportation

- Short-Term Recommendations
Improve one-way street system



Linden Gateway Small Area Study
– Transportation

□ Short-Term Recommendations: TANK Bus Route



Linden Gateway Small Area Study – Transportation

□ Short-Term Recommendations

Covington Strategic Plan

■ Proposed bike loop

- Provide signing and pavement markings consistent with the city-wide bike loop.
- Provide bike racks at all public facilities and points of interest. This may include at a minimum the Linden Gateway Cemetery and other locations, such as commercial areas where bicyclist might want to stop to purchase goods or to sightsee.



Linden Gateway Small Area Study

– Transportation

- Areas recommended for further study
 - Conduct a comprehensive signal warrant analysis of all traffic signals within the study area.
 - Conduct a feasibility study to determine the potential to coordinate traffic signals on 19th Street.
 - Conduct a traffic engineering study of the signals on 12th Street to determine the appropriate cycle length and offsets capable of providing acceptable levels of service and minimal traffic speeds to accommodate the pedestrian friendly goals of the corridor redevelopment plan.

□ Long-Term Recommendations

■ Improve east-west connectivity

- Repair/Reopen the 15th Street Bridge to passenger car traffic with restrictions on large vehicles.
- Investigate the feasibility of future crossings at 16th Street or 17th Street with appropriate improvements along each corridor.
- Widen 17th Street to provide two-way operation without an additional crossing over the railroad.

■ Reconfiguration of Russell and Augustine Streets

- Investigate the implementation of a single lane modern roundabout at the intersection of Russell Street and Augustine Avenue.

■ Reconfigure Linden and Woodburn Avenues

- Increase building setbacks and realign Linden Avenue to improve sight distance and operations at the intersection.

Linden Gateway Small Area Study

SMALL GROUP DISCUSSION

PROJECT WEBSITE

<http://www.nkapc.org/CovingtonStudy.html>

TO RECEIVE MONTHLY UPDATES SEND EMAIL TO

smallareastudy07@nkapc.org