

LINDEN GATEWAY SMALL AREA STUDY

Task Force Meeting
Thursday, April 24, 2008



City of Covington

NKAPC



Linden Gateway Small Area Study – Land Use

AREA 5

Recommended Change



Linden Gateway Small Area Study – Land Use

AREA 4

2006 Comp Plan



Recommendation



Linden Gateway Small Area Study – Land Use

AREA 4

2006 Comp Plan



Recommended Change



Linden Gateway Small Area Study – Land Use

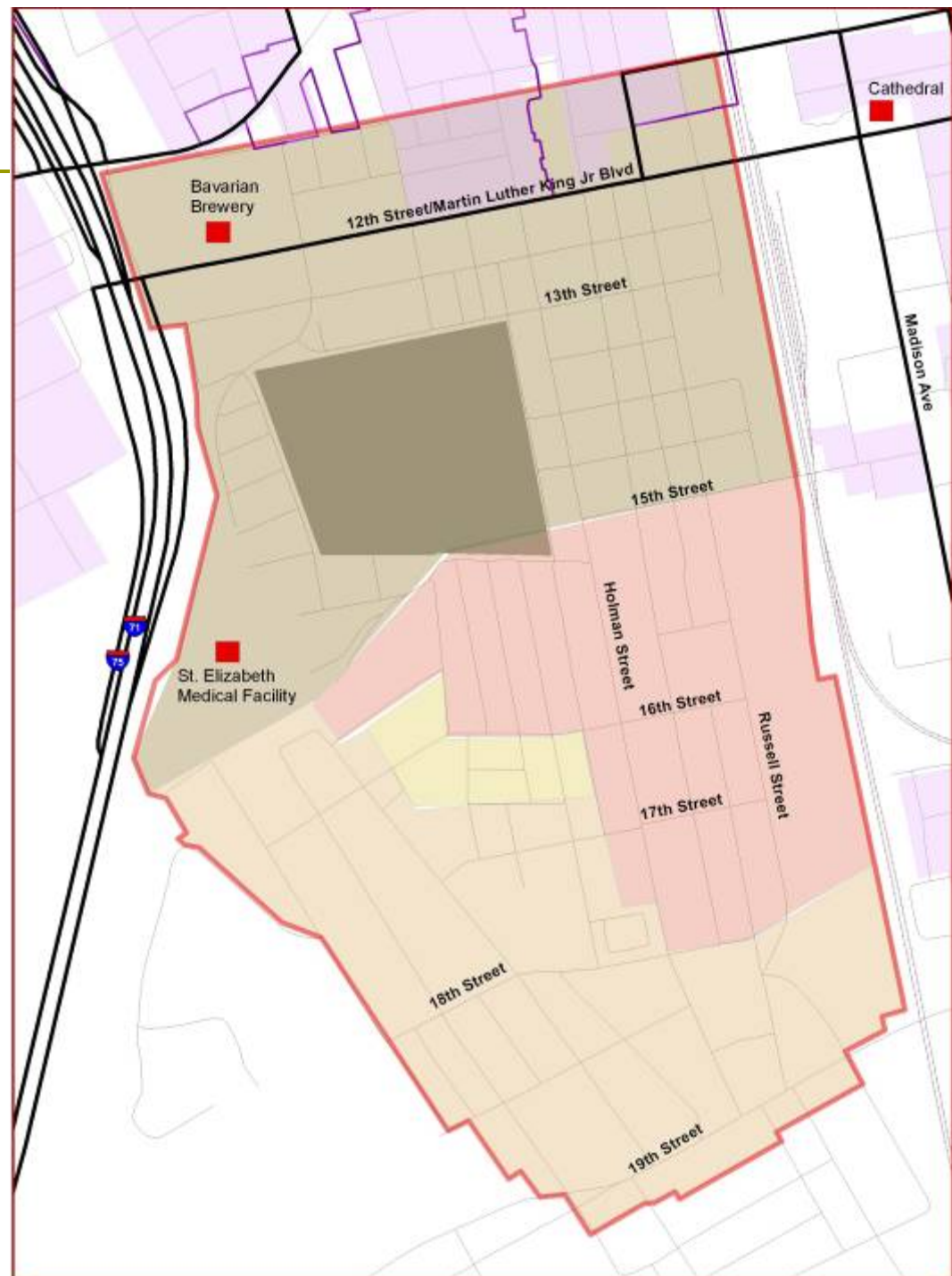
AREA 1



Linden Gateway Small Area Study – Historic Preservation

Recommendation:

- The whole area is eligible for the National Register as a District (s)
- Survey done in phases
- Development of the area was in progression from North to South
- Subdivisions and the street pattern



Linden Gateway Small Area Study - Green Infrastructure



Linden Gateway Small Area Study – Land Use

AREA 5

Recommended Change

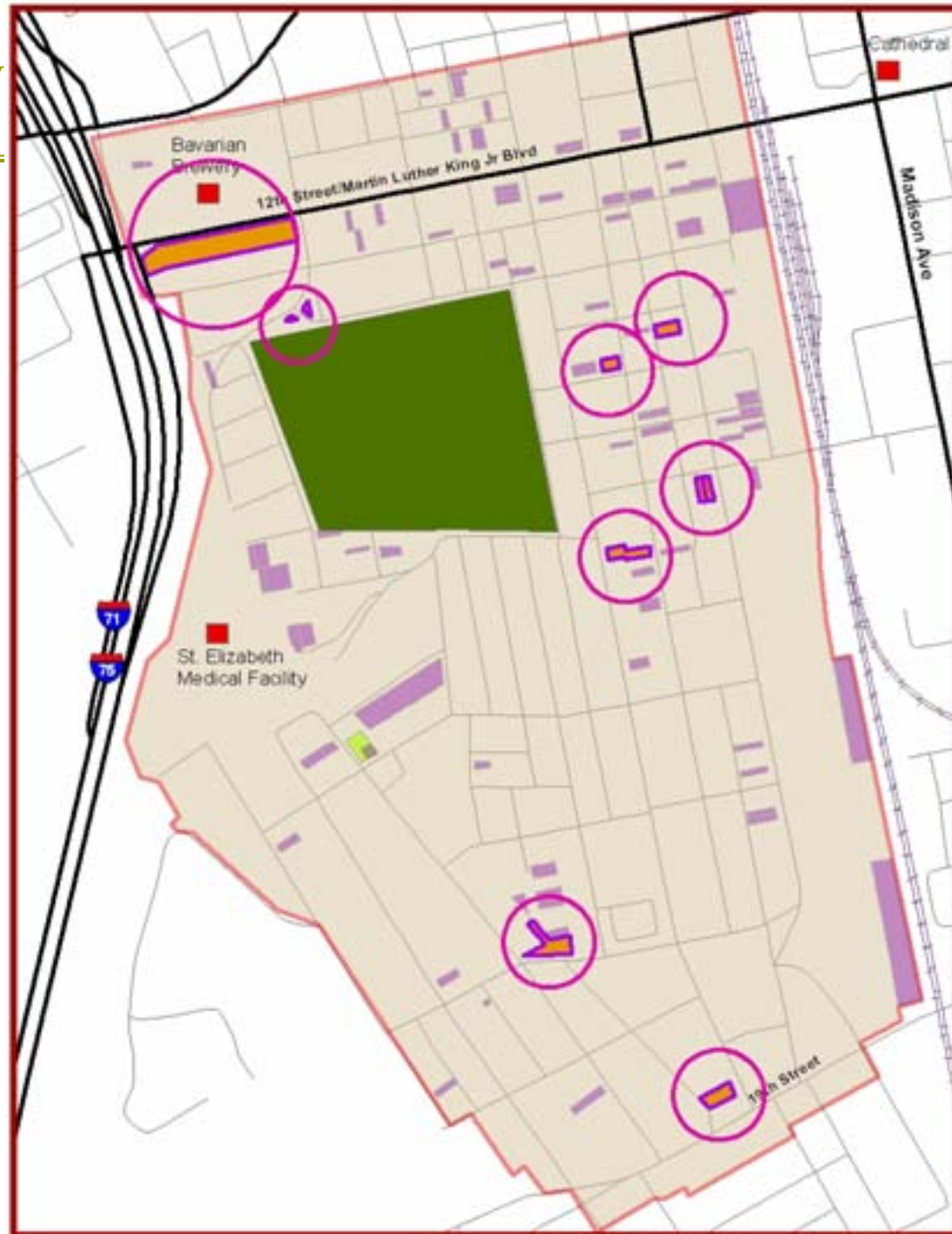


Linden Gateway Small Area Study Parks and Recreation

Opportunity Sites

8 Sites

- Gateway
- Community Garden
- New Park
- Existing Park



Linden Gateway Small Area Study Parks and Recreation

Existing Parks Inventory

▣ Neighborhood

Parks:

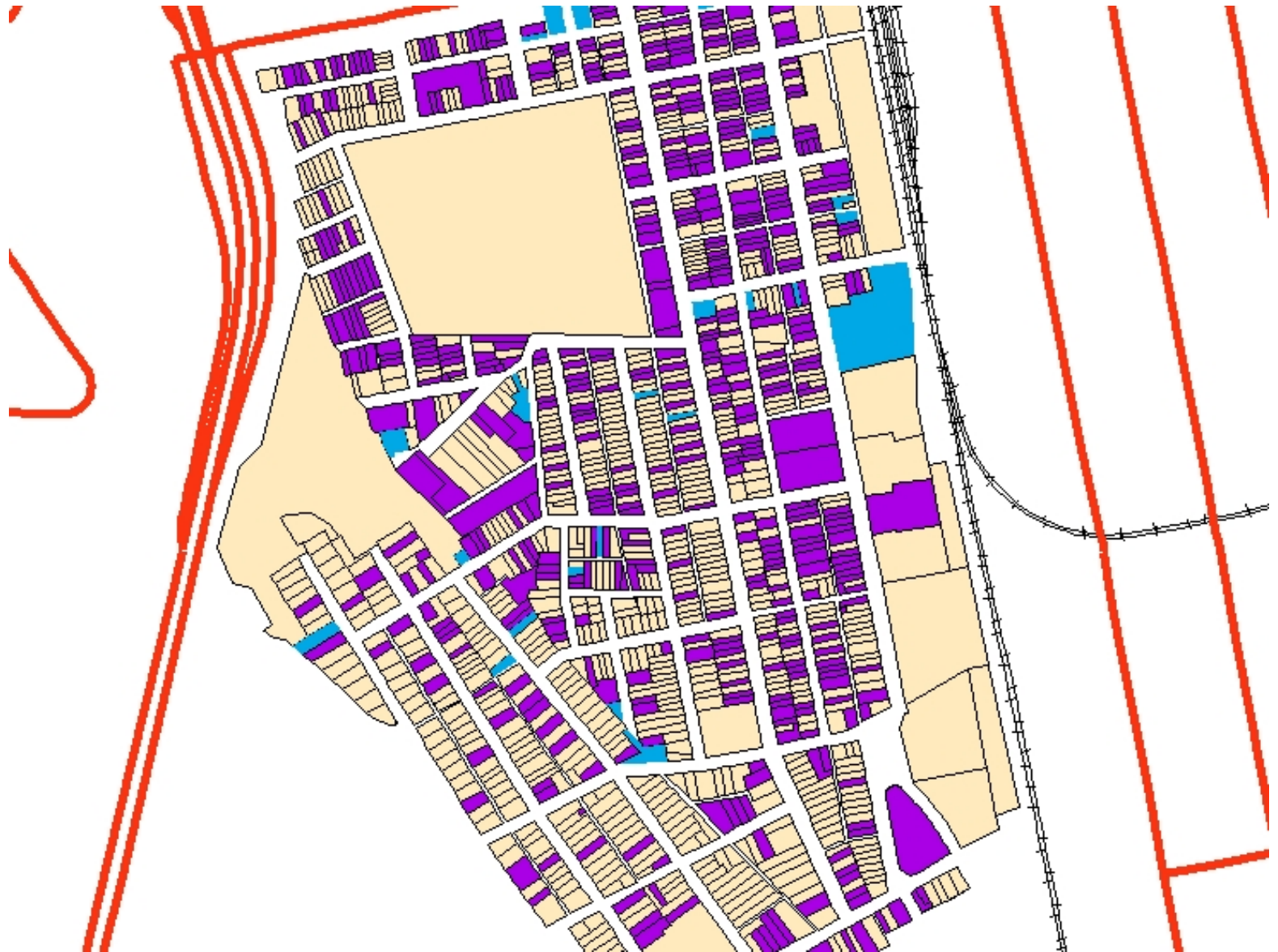
- John G. Carlisle Elementary
- Glen O. Swing Elementary

▣ Mini Parks:

- Col. Justin Sims Memorial Park



Linden Gateway Small Area Study – Housing - Ownership



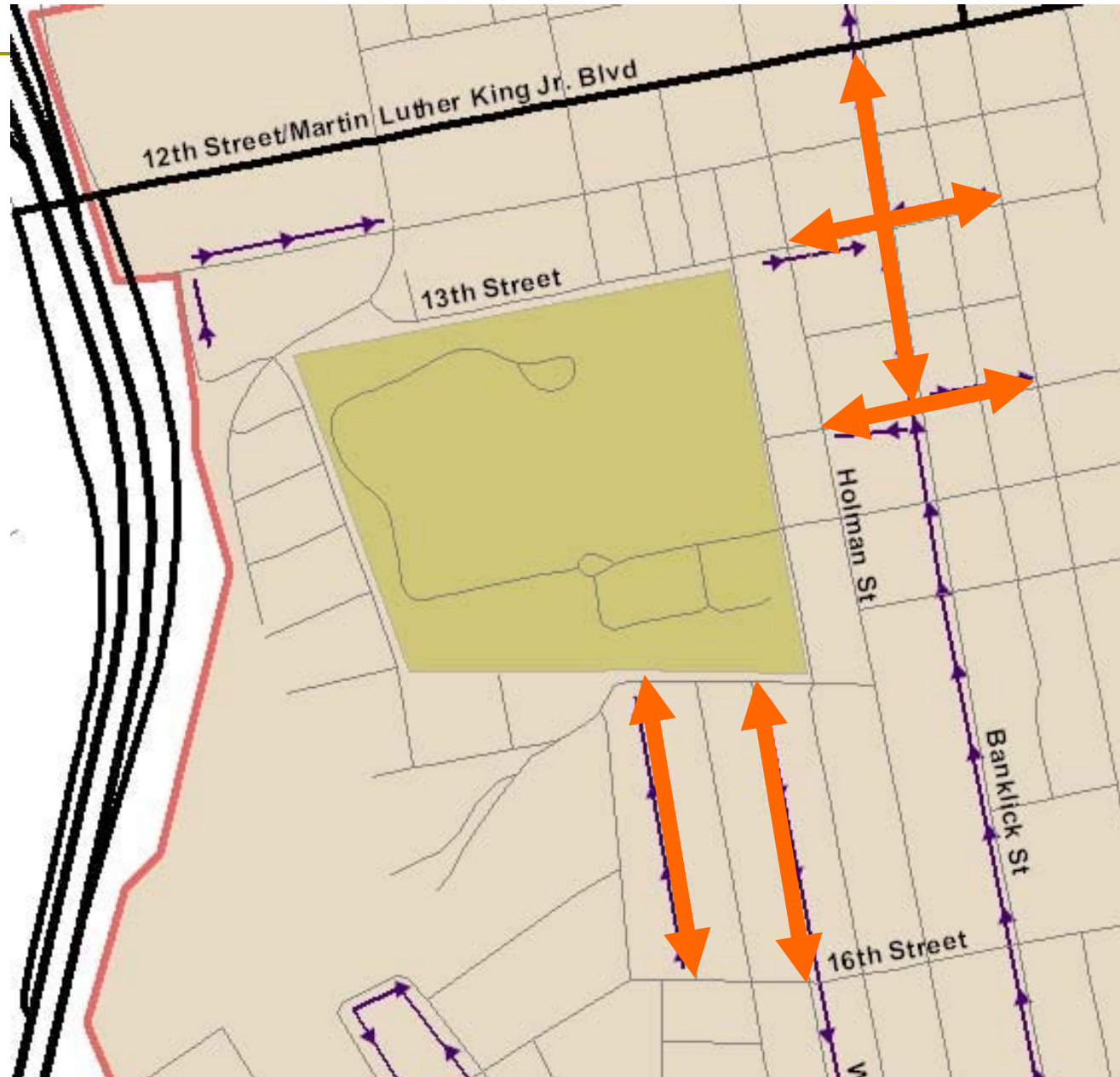
Linden Gateway Small Area Study - Housing

- ❑ Increase Awareness of existing programs
 - Educate community on sound homeownership practices
 - Support government measures that help residents become homeowners
- ❑ Encourage Homeownership
 - Increase participation in existing homeownership programs
 - Employer assisted housing programs
- ❑ Improve Existing Structures
 - Targeted code enforcement programs
 - Home improvement assistance program

Linden Gateway Small Area Study

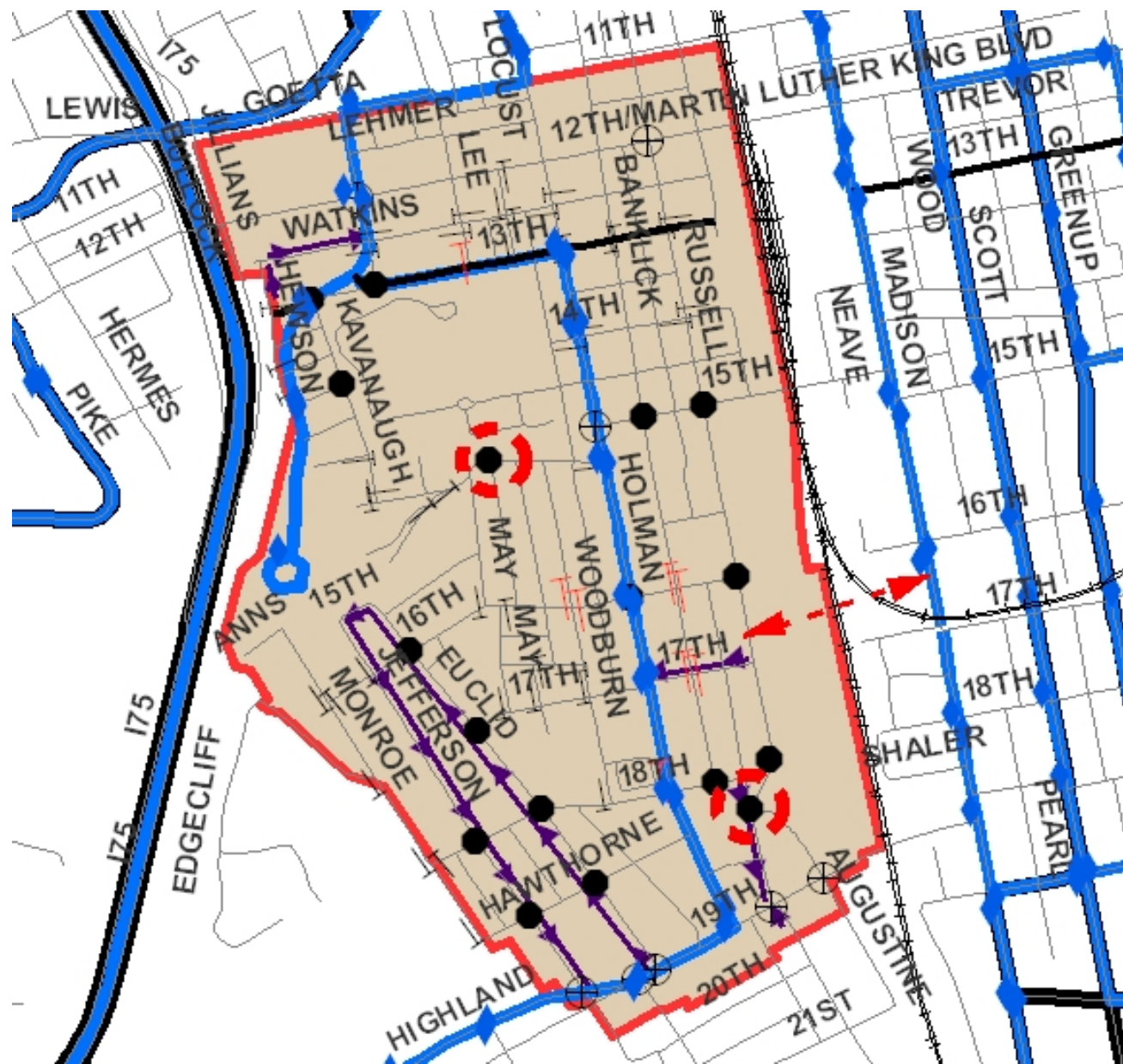
– Transportation

- Short-Term Recommendations
Improve one-way street system



Linden Gateway Small Area Study

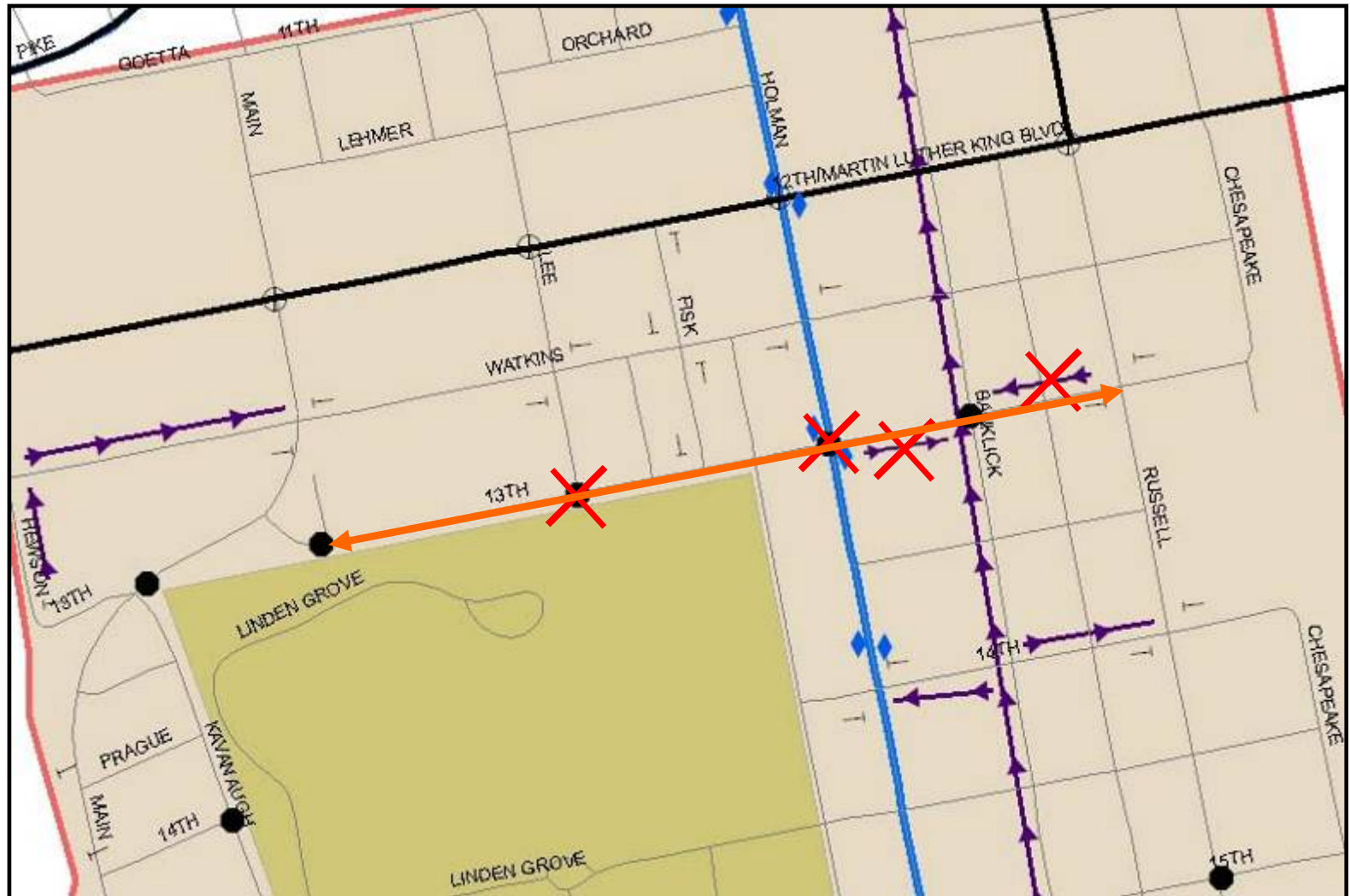
– Transportation



Linden Gateway Small Area Study - Transportation

□ Short-Term Recommendations

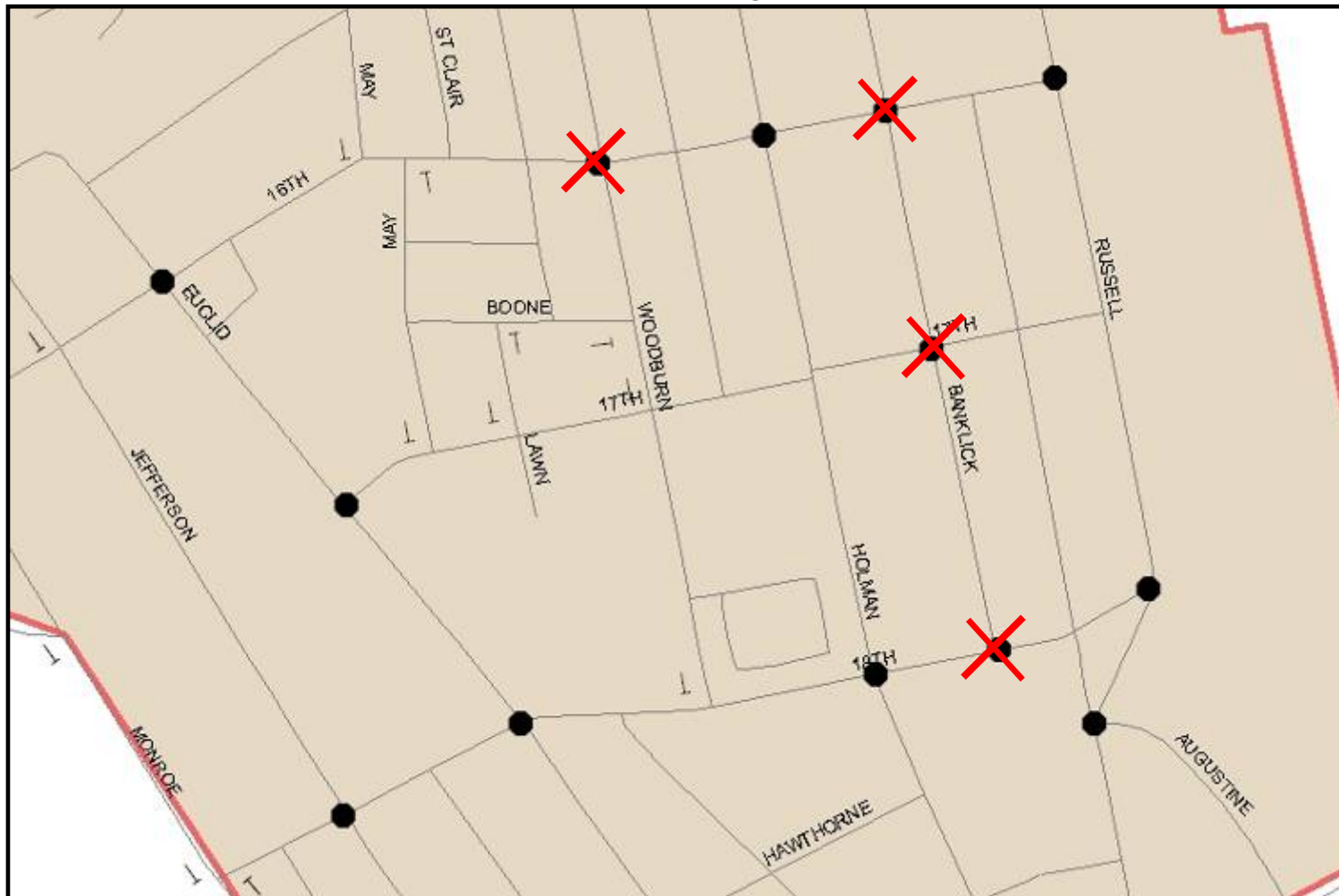
Improve east-west connectivity: 13th Street



Linden Gateway Small Area Study - Transportation

❑ Short-Term Recommendations

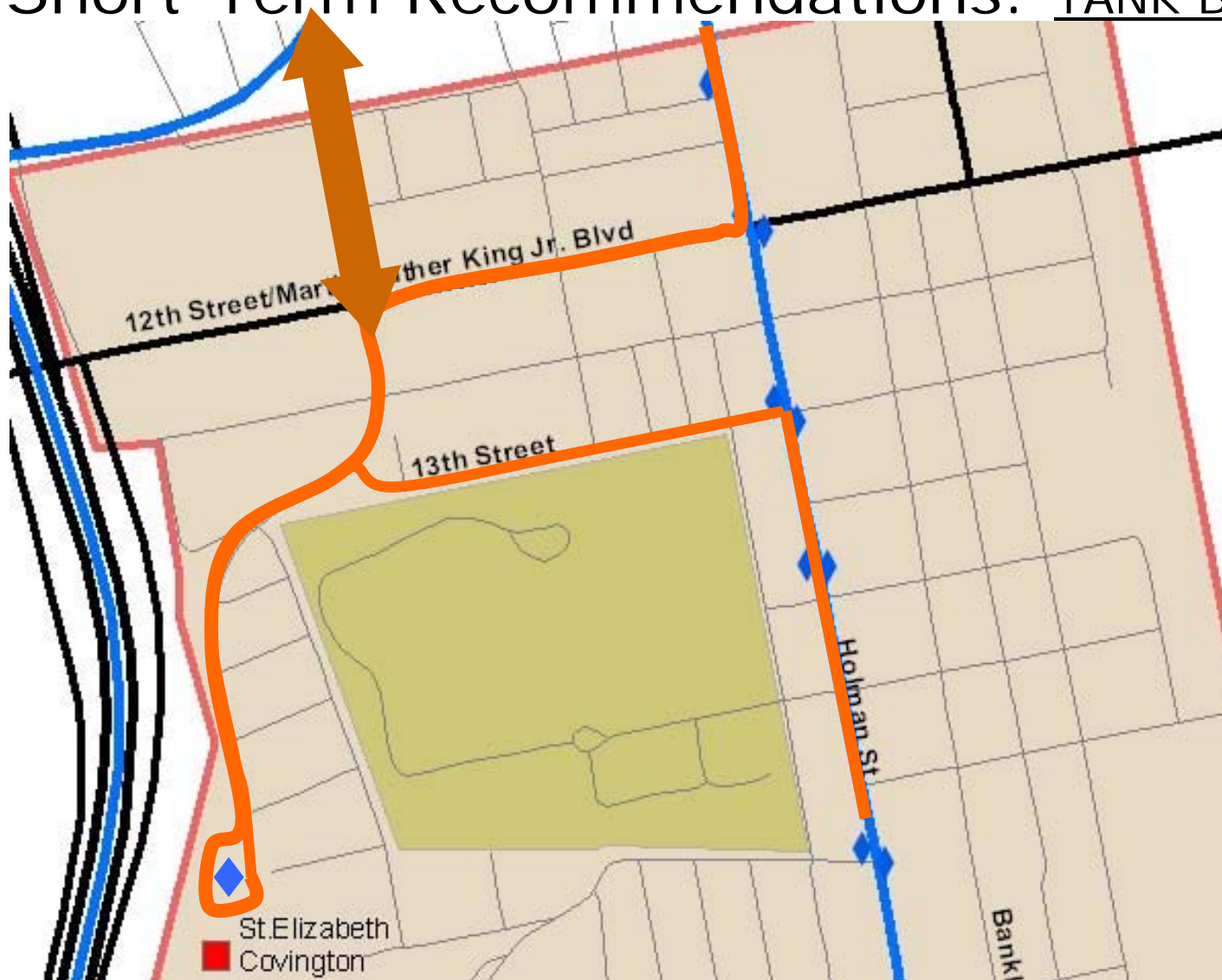
Improve east-west connectivity: Southern portion



Linden Gateway Small Area Study

– Transportation

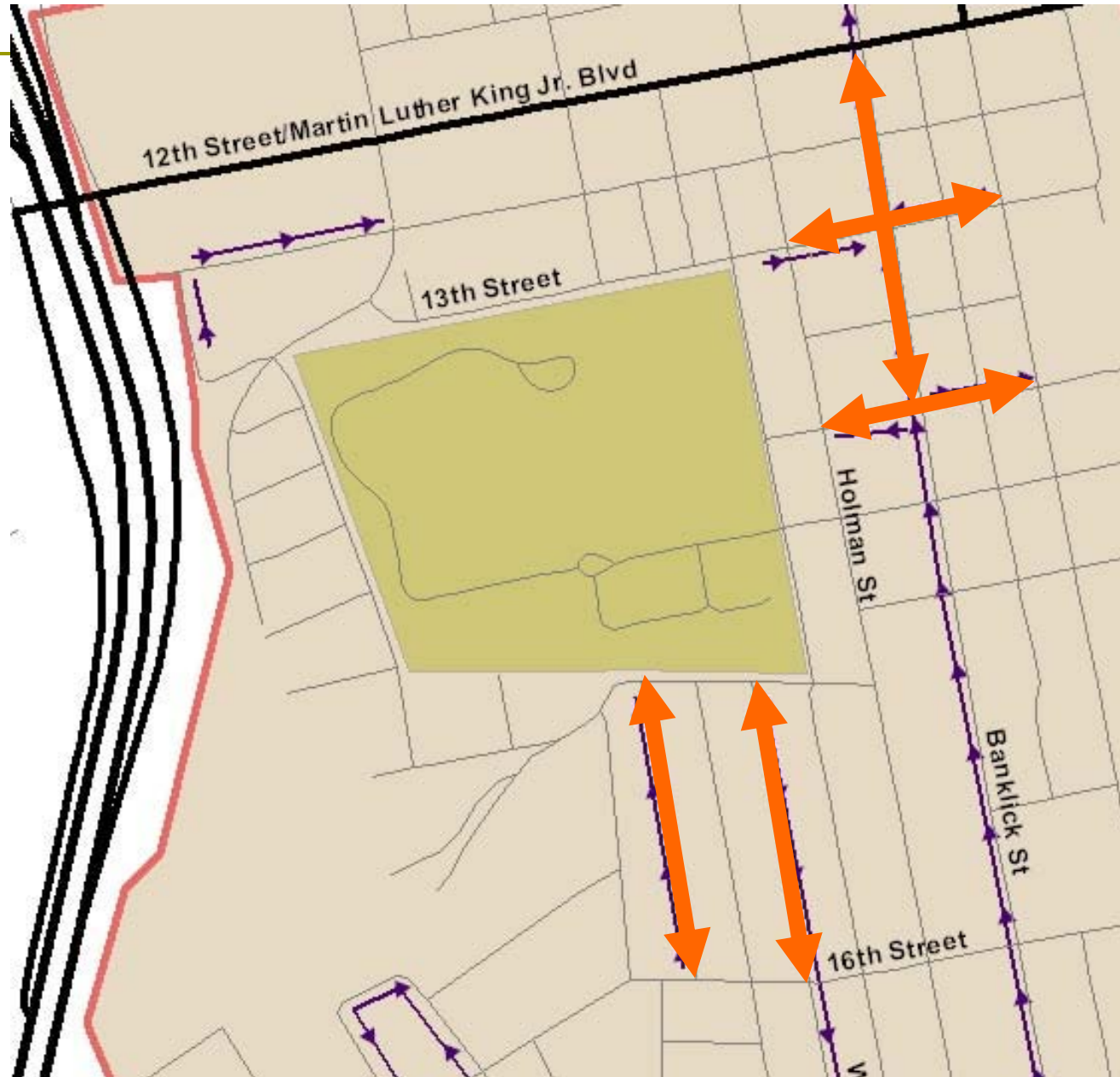
❑ Short-Term Recommendations: TANK Bus Route



Linden Gateway Small Area Study

– Transportation

- Short-Term Recommendations
Improve one-way street system



❑ Short-Term Recommendations

Covington Strategic Plan

■ Proposed bike loop

- ❑ Provide signing and pavement markings consistent with the city-wide bike loop.
- ❑ Provide bike racks at all public facilities and points of interest. This may include at a minimum the Linden Gateway Cemetery and other locations, such as commercial areas where bicyclist might want to stop to purchase goods or to sightsee.



Linden Gateway Small Area Study

– Transportation

- ❑ Areas recommended for further study
 - Conduct a comprehensive signal warrant analysis of all traffic signals within the study area.
 - Conduct a feasibility study to determine the potential to coordinate traffic signals on 19th Street.
 - Conduct a traffic engineering study of the signals on 12th Street to determine the appropriate cycle length and offsets capable of providing acceptable levels of service and minimal traffic speeds to accommodate the pedestrian friendly goals of the corridor redevelopment plan.

□ Long-Term Recommendations

■ Improve east-west connectivity

- Repair/Reopen the 15th Street Bridge to passenger car traffic with restrictions on large vehicles.
- Investigate the feasibility of future crossings at 16th Street or 17th Street with appropriate improvements along each corridor.
- Widen 17th Street to provide two-way operation without an additional crossing over the railroad.

■ Reconfiguration of Russell and Augustine Streets

- Investigate the implementation of a single lane modern roundabout at the intersection of Russell Street and Augustine Avenue.

■ Reconfigure Linden and Woodburn Avenues

- Increase building setbacks and realign Linden Avenue to improve sight distance and operations at the intersection.