

Latonia Small Area Study

3.25.10

Tonight's Agenda

2 of 71

1. Wrap Up Goals
2. Transportation
3. Streetscape
4. Wayfinding
5. Public Meeting Update
6. Next Meeting's Tentative Agenda

Goals

3.25.10

Latonia Small Area Study

Goals

4 of 71

- Enhance the overall safety of the area for everyone that resides in or visits Latonia.
- Improve and preserve the area's historic housing stock and increase home ownership.
- Retain the historic character of Ritte's Corner while enhancing and improving retail opportunities.
- Revitalize and redevelop transitioning commercial areas to be competitive and successfully meet the demands of local and regional customers.
- Provide new opportunities for parks, green space and recreation within the neighborhood.
- Promote the Latonia area through strategic marketing and other efforts, which capitalize on the neighborhood's strengths and assets.
- Improve mobility in the area by creating multi-modal opportunities that provide safe and efficient access for residents, business customers and visitors.

Goals

5 of 71

- Enhance the overall safety of the area for everyone that resides in or visits Latonia.
- Improve and preserve the area's historic housing stock and increase home ownership.
 - ▣ **Preserve the area's historic housing stock**
 - ▣ **Improve and enhance all residential properties and increase home ownership**
- Improve mobility in the area by creating multi-modal opportunities that provide safe and efficient access for residents, business customers and visitors.
 - ▣ **Improve mobility in the area by enhancing vehicular, pedestrian, bicycle, and mass transit connectivity that provide for safe and efficient access for residents , businesses and visitors.**

Transportation

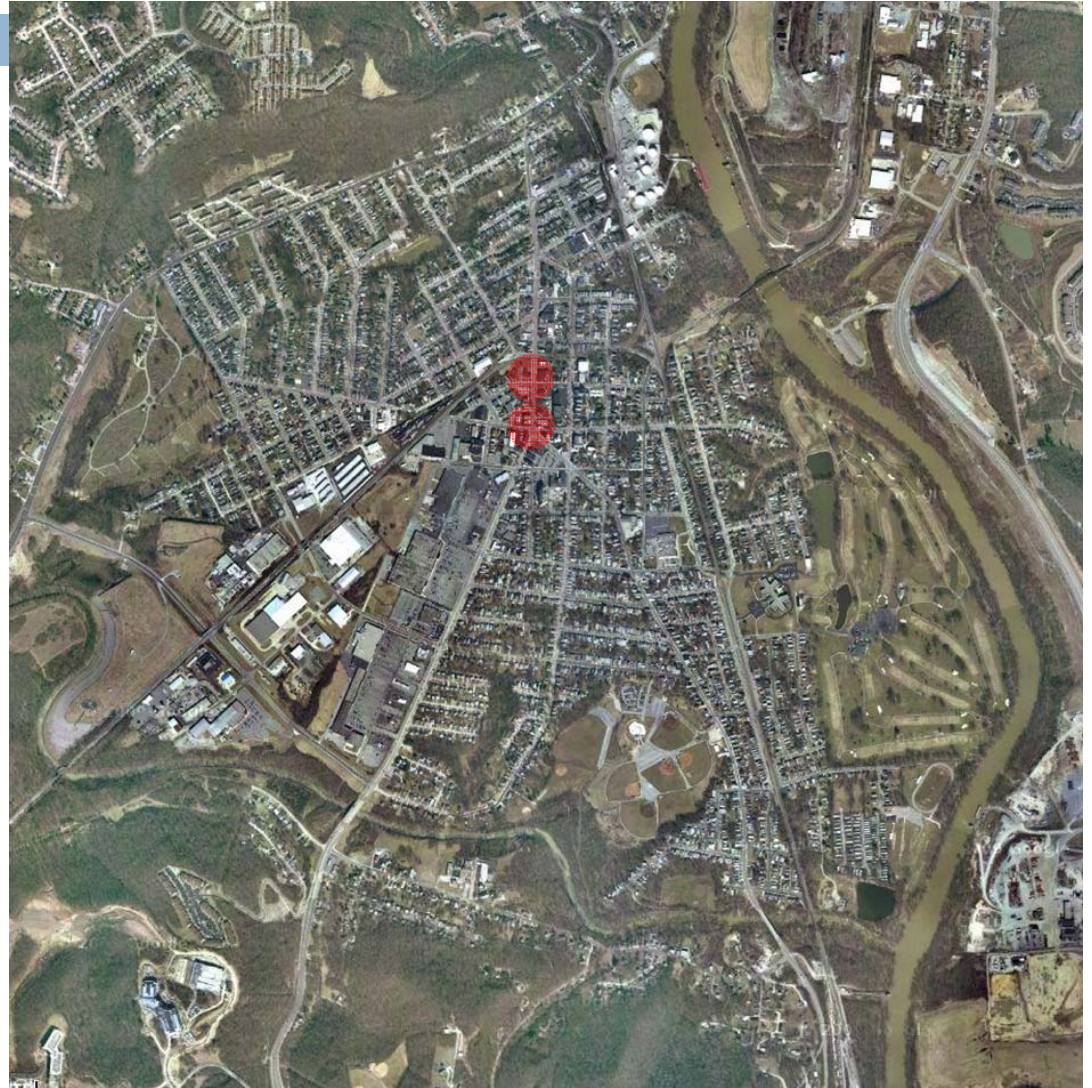
3.25.10

Latonia Small Area Study

Transportation Existing Conditions

7 of 71

- Local Choke Points
 - Ritte's Corner
 - At-Grade Crossings



3.25.10

Latonia Small Area Study

Transportation Existing Conditions

8 of 71

- East-West Connectivity



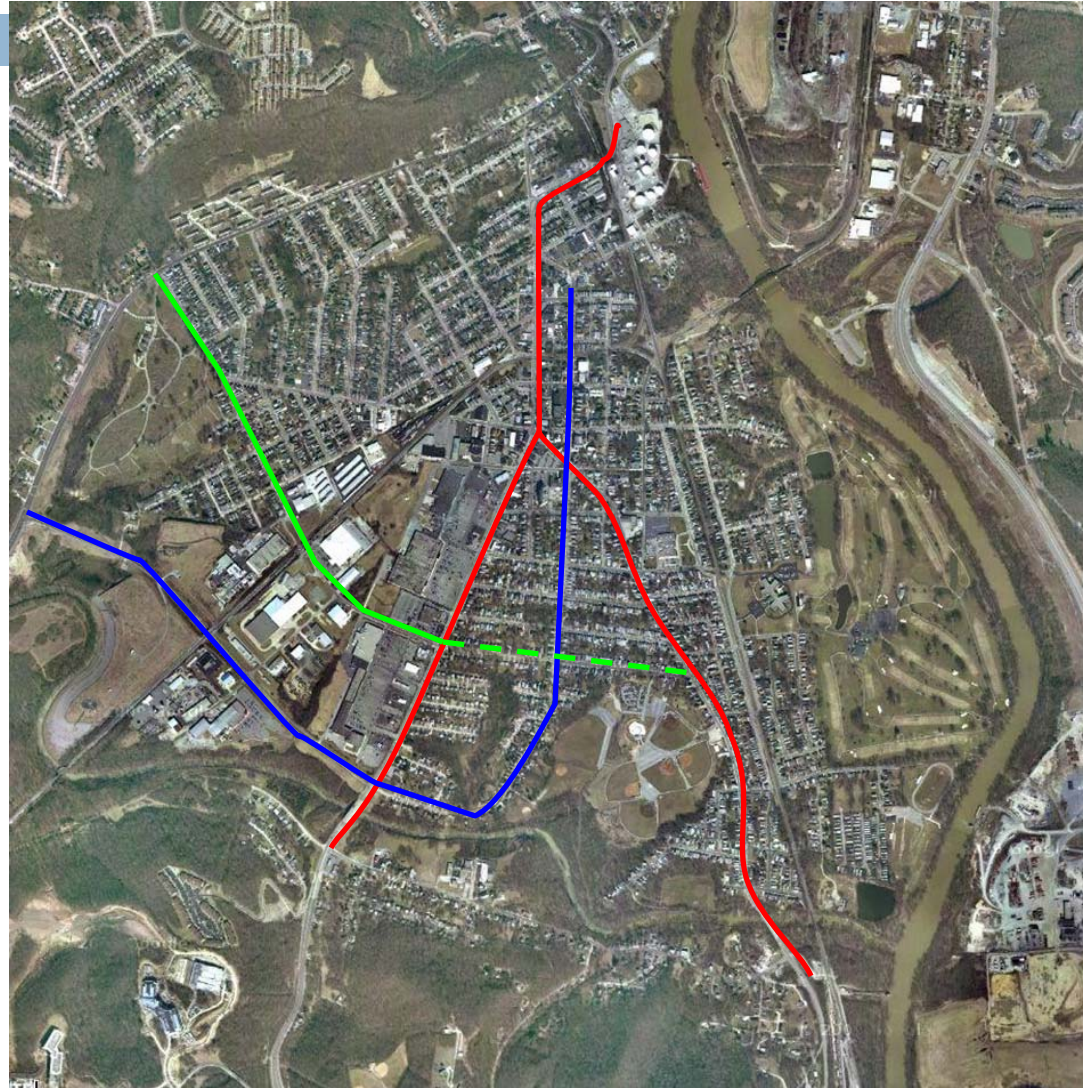
3.25.10

Latonia Small Area Study

Transportation Existing Conditions

9 of 71

- General Connectivity



3.25.10

Latonia Small Area Study

Transportation Opportunities

10 of 71

- Winston Avenue



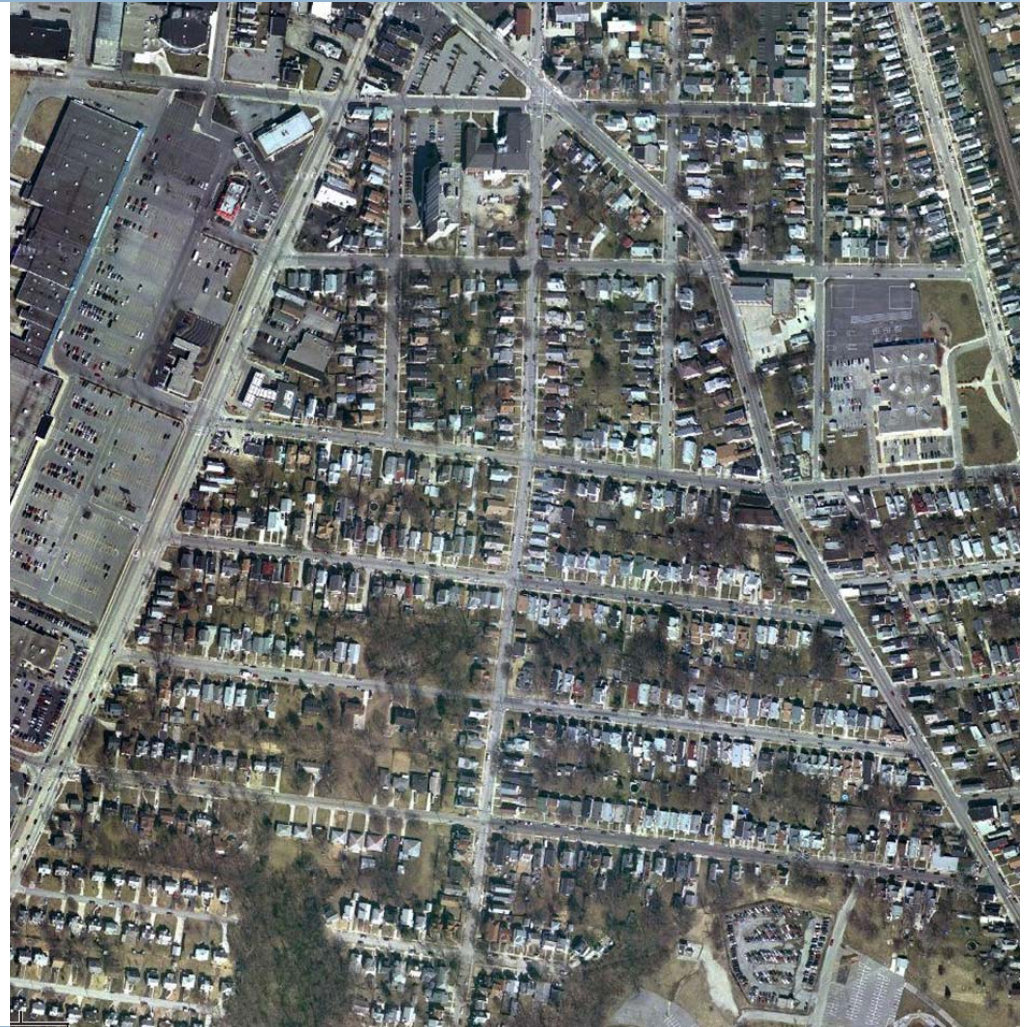
3.25.10

Latonia Small Area Study

Transportation Opportunities

11 of 71

- One-Way Streets

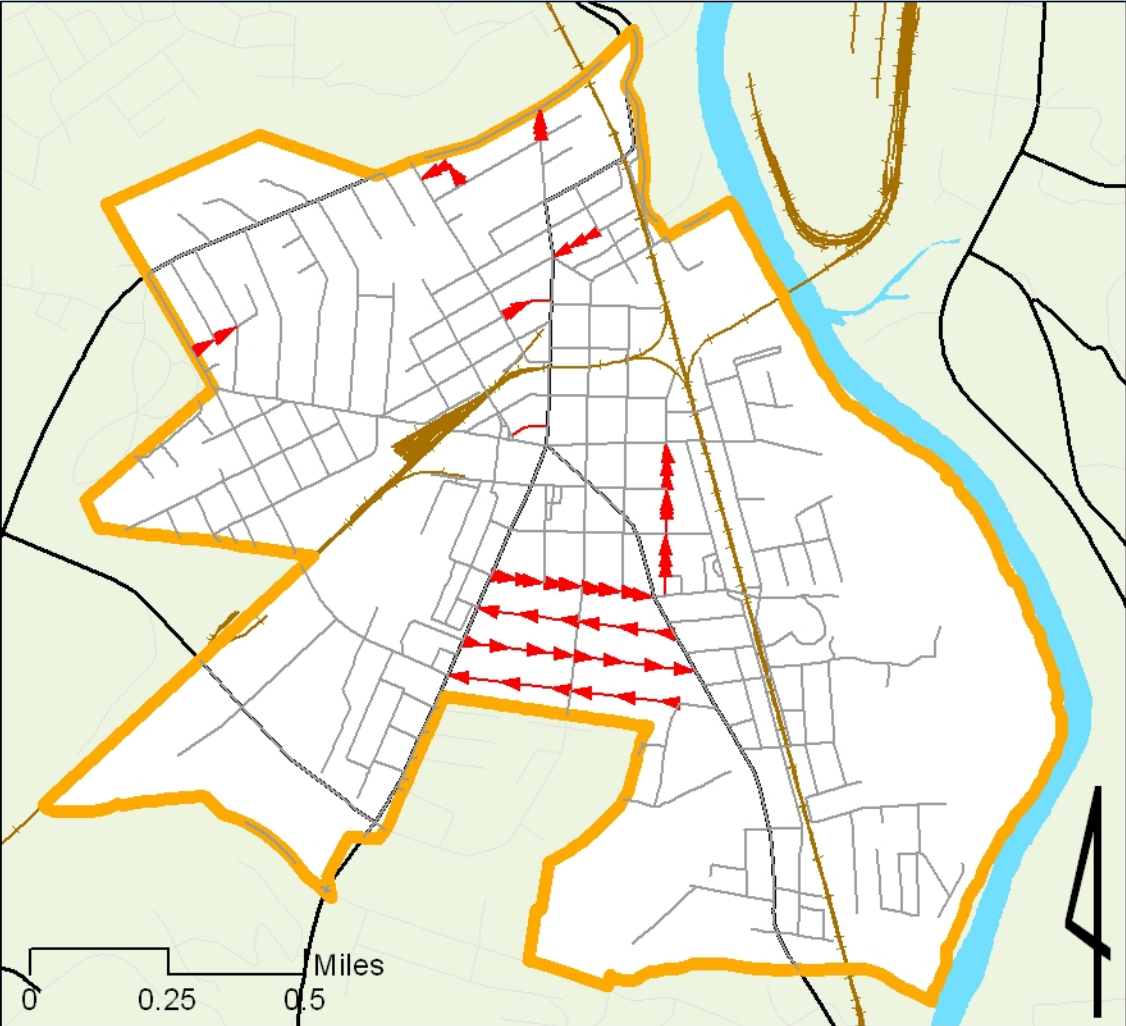
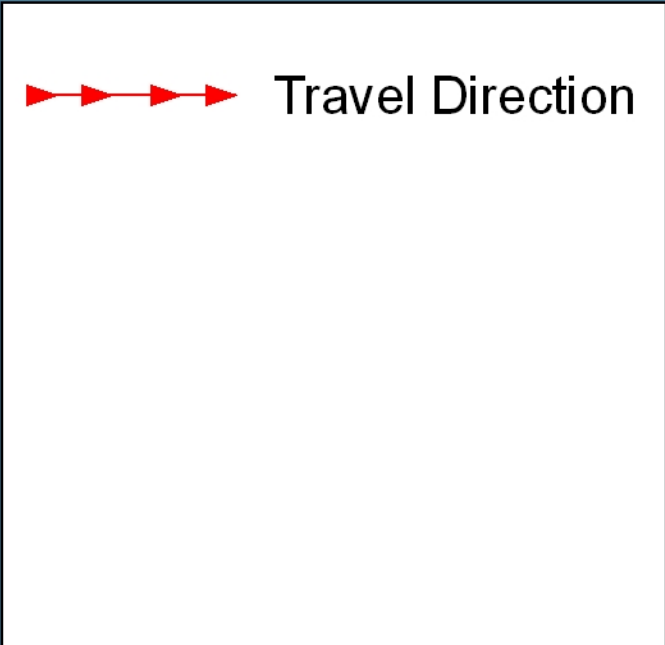


3.25.10

Latonia Small Area Study

Streetscape-Streets

One-way Streets



Transportation

Residential Off-Street Parking Deficiencies

13 of 71

Off Street Parking

-  No Off Street Parking
-  Off Street Parking



Transportation

Other Issues

14 of 71

- Tractor trailers cannot enter eastern side of the study area because of rail crossings
- Problem with four way intersections and 3 way stops near railroad underpass at East 40th Street
- Lack of short term parking in the vicinity of Ritte's Corner
- High Volume of Truck Traffic on Decoursey/Winston Avenue

Transportation

Conclusion

15 of 71

- Overall the transportation system within the study area has adequate capacity to handle the existing traffic levels. The primary issues that should be addressed is the limited connectivity in the study area, complicated by the short residential street pattern and numerous at grade rail crossings in the study area.

Transportation

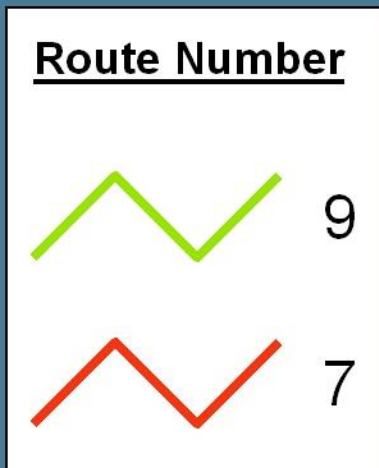
The Plan

16 of 71

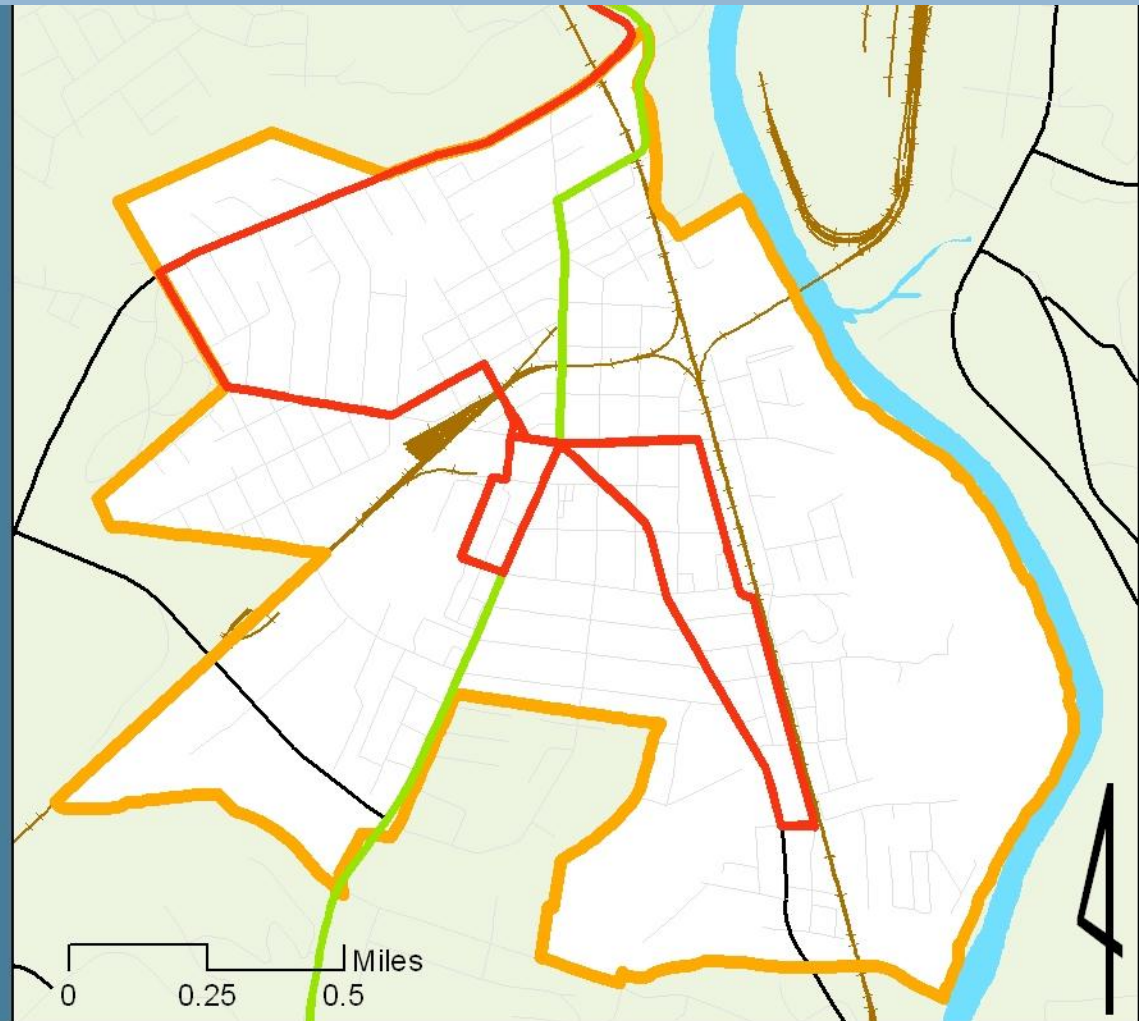
- Examine full stops for four way intersections at railroad and East 40th Street
- Identify safety issues surrounding Church Street at Holy Cross
- Identify Alternatives to One-Way Streets
- Consider parking study for areas near Ritte's Corner
- Other issues to consider?

Transportation TANK Routes

17 of 71



25 is a newly designated route and is not yet encoded



3.25.10

Latonia Small Area Study

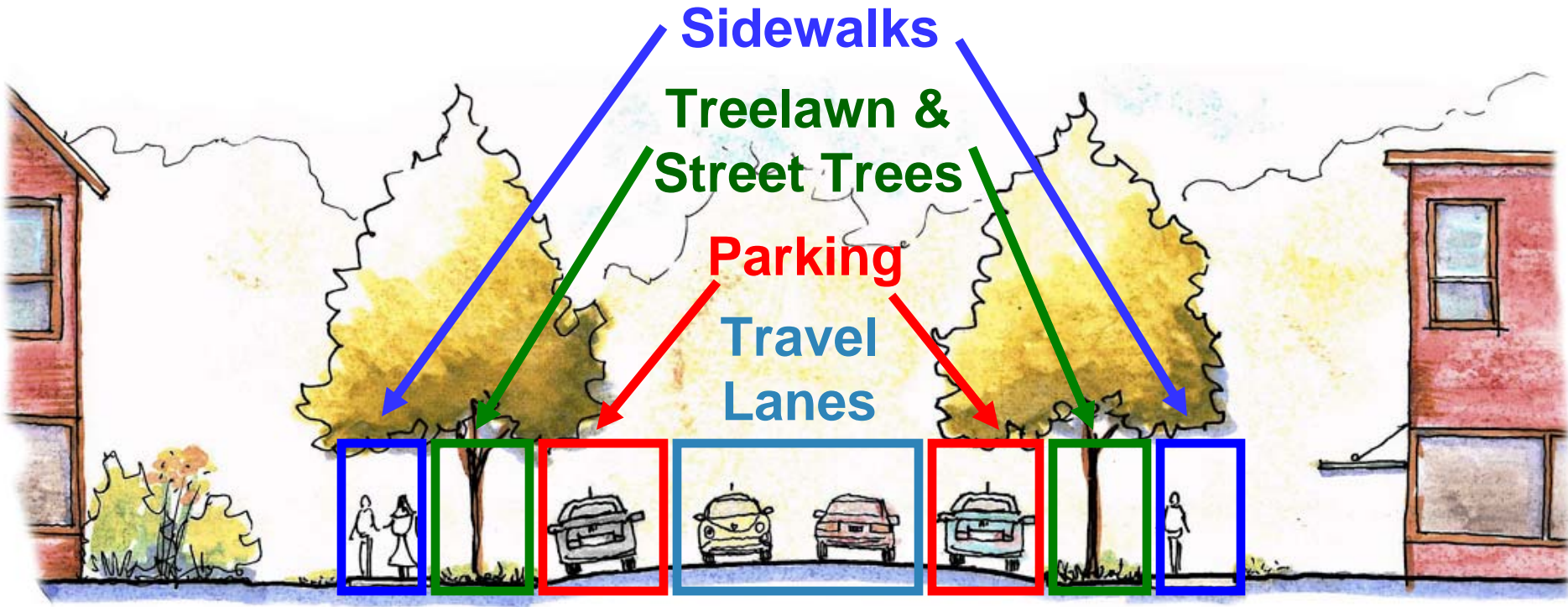
Streetscape

3.25.10

Latonia Small Area Study

Streetscape

Parts of the Streetscape

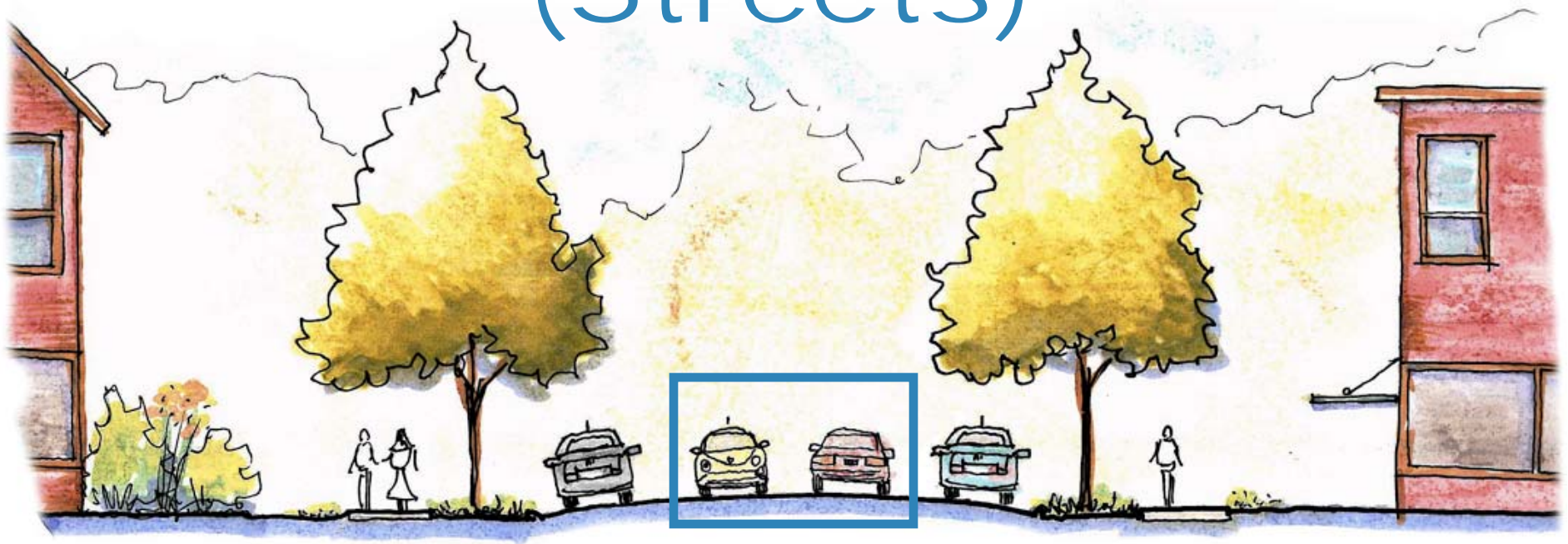


Streetscape

Parts of the Streetscape

20 of 71

Travel Lanes (Streets)



3.25.10

Latonia Small Area Study

Streetscape-Streets

Conditions and Traffic Volumes

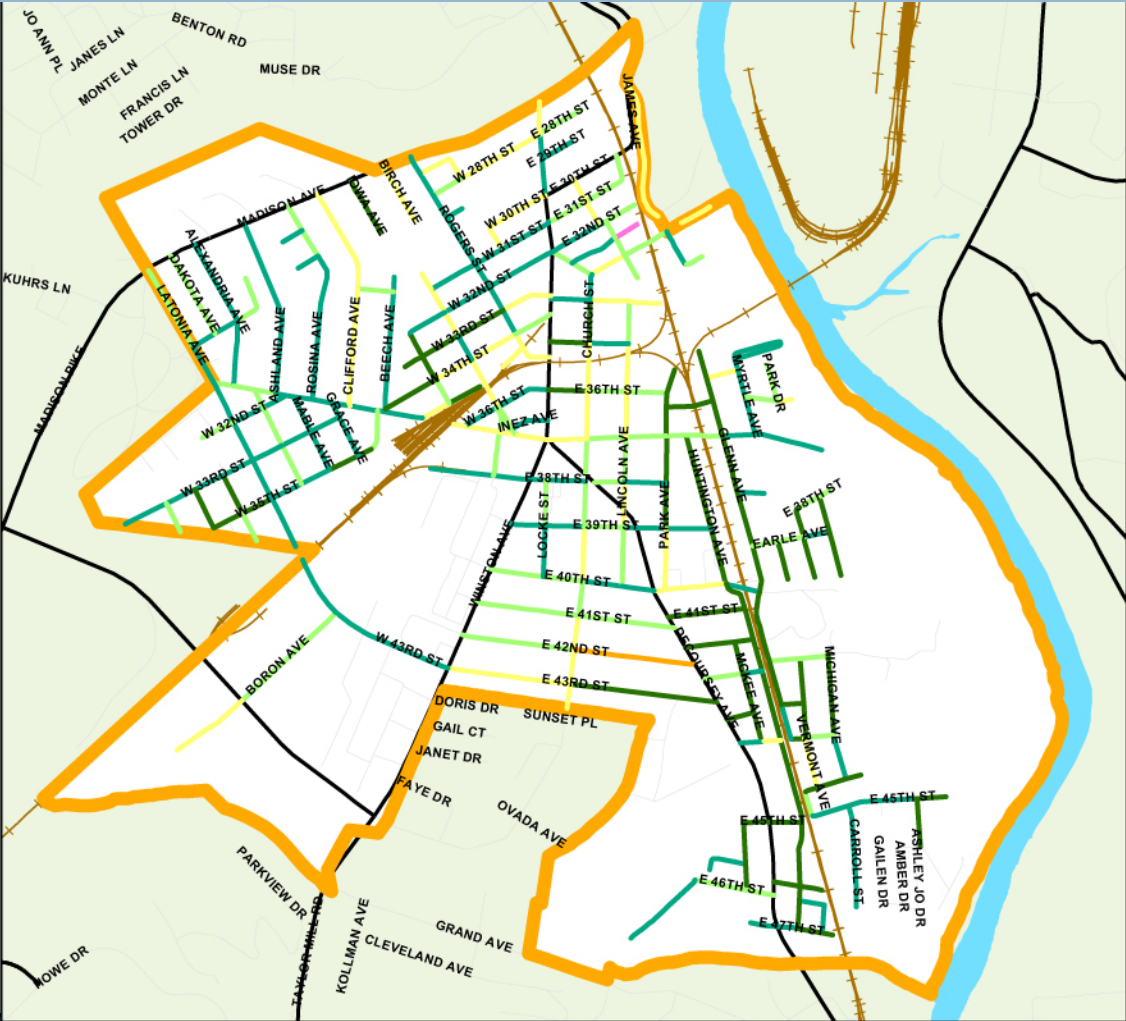
21 of 71

- Varying street widths throughout study area
- 83.2% have condition ranges of
 - ▣ Very Good, Satisfactory, or Good
- 16.8% have condition ranges of
 - ▣ Poor, Very Poor, Serious or Failed
- Busiest streets are Winston & Madison
 - ▣ Counts of 18,000 to 19,500 vehicles per day
- Madison has on street parking and two travel lanes
- Winston is approximately 63 feet wide with traversable median and little to no street trees

Streetscape-Streets Conditions

Legend

- Condition**
- Very Good
 - Satisfactory
 - Fair
 - Poor
 - Very Poor
 - Serious
 - Failed
- Study Area
 - US and State Hwy
 - County and Local Roadways



Streetscape-Streets

Winston Ave.

23 of 71



3.25.10

Latonia Small Area Study

Streetscape-Streets Decoursey Ave.

24 of 71



3.25.10

Latonia Small Area Study

Streetscape-Streets

Decoursey Ave. Deliveries

25 of 71



3.25.10

Latonia Small Area Study

Streetscape-Streets

The Plan

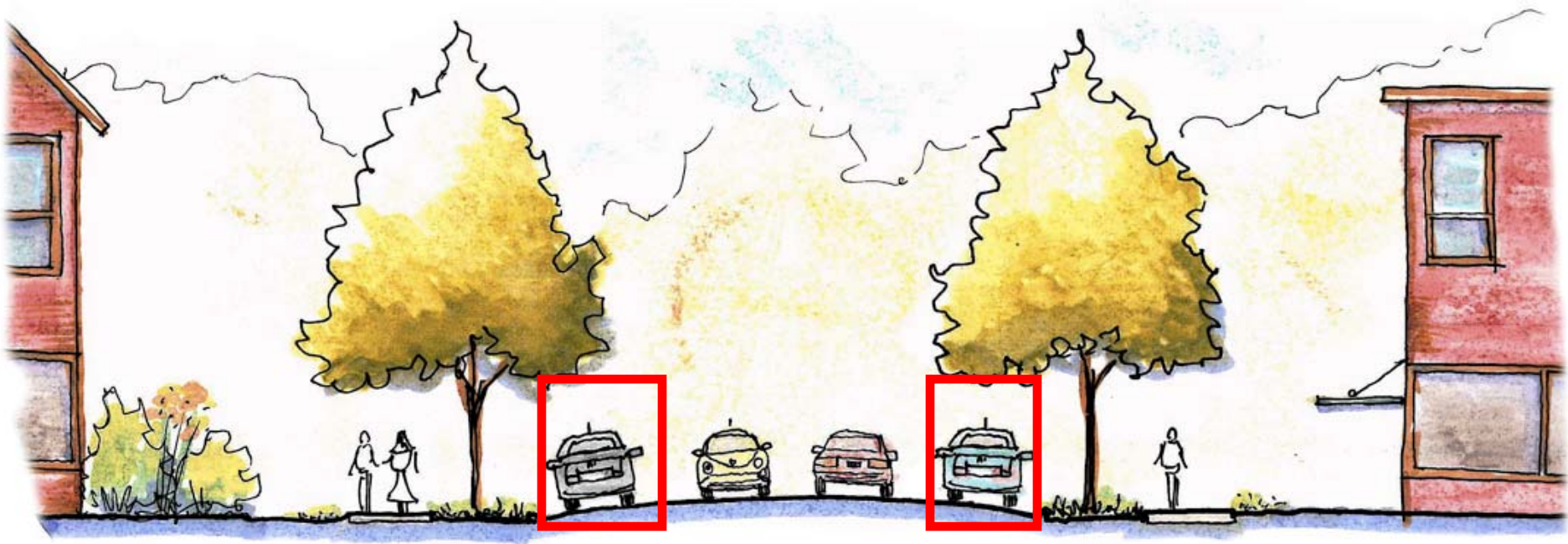
26 of 71

- Examine rehabbing streets in need of repair
- Examine the feasibility of modifying Winston to be more inviting for pedestrians and cyclists
- Consider green infrastructure practices along Winston corridor
 - ▣ Street trees
 - ▣ Vegetated median
- Be mindful of issues like Decoursey deliveries
- Other issues to consider?

Streetscape

Parts of the Streetscape

Parking



Streetscape-Parking




Existing Conditions

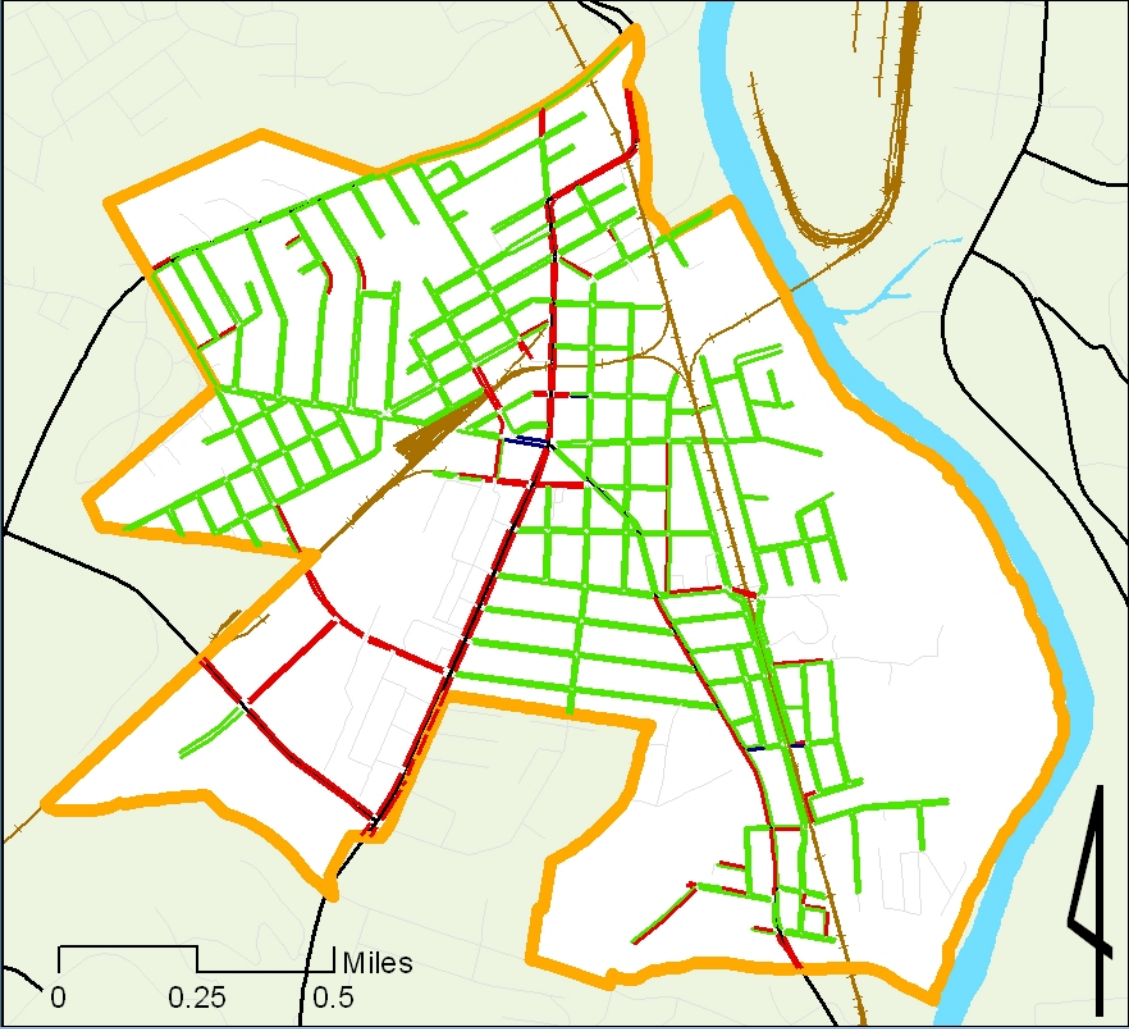
28 of 71

- Unrestricted on-street parking is allowed throughout most of the study area

Streetscape-Parking

On-Street Parking

-  No Parking
-  Special Restrictions
-  Parking Allowed



Streetscape-Parking

Existing Conditions

30 of 71

- Unrestricted on-street parking is allowed throughout most of the study area
- Several parcels lack off-street parking areas

Streetscape

Residential Off-Street Parking Deficiencies

31 of 71

Off Street Parking

-  No Off Street Parking
-  Off Street Parking



Streetscape-Parking

Existing Conditions

32 of 71

- Unrestricted on-street parking is allowed throughout most of the study area
- Several parcels lack off-street parking areas
- Reports of parking shortages near Ritte's Corner

Streetscape-Parking

The Plan

33 of 71

- ❑ Carefully examine how changes to roadway affect availability of on-street parking
- ❑ Identify parcels for shared neighborhood off-street parking lots if on-street parking is recommended for modification / reconfiguration
- ❑ Research needs of parking in Ritte's Corner and consider restrictions to augment supply
- ❑ Other issues to consider?

Streetscape

Parts of the Streetscape

34 of 71

Treelawns & Street Trees



3.25.10

Latonia Small Area Study

Streetscape-Street Trees

Benefits of Street Trees

35 of 71

- ❑ Increased safety
- ❑ Traffic calming
- ❑ Increased security
- ❑ Reduced stormwater runoff
- ❑ Provision of shade
- ❑ Absorbs and filters harmful airborne emissions
- ❑ Lowers the urban air temperature
- ❑ Softens the built environment
- ❑ Adds value to adjacent homes and businesses

Streetscape-Street Trees

Definition of Street Trees in the Study

36 of 71

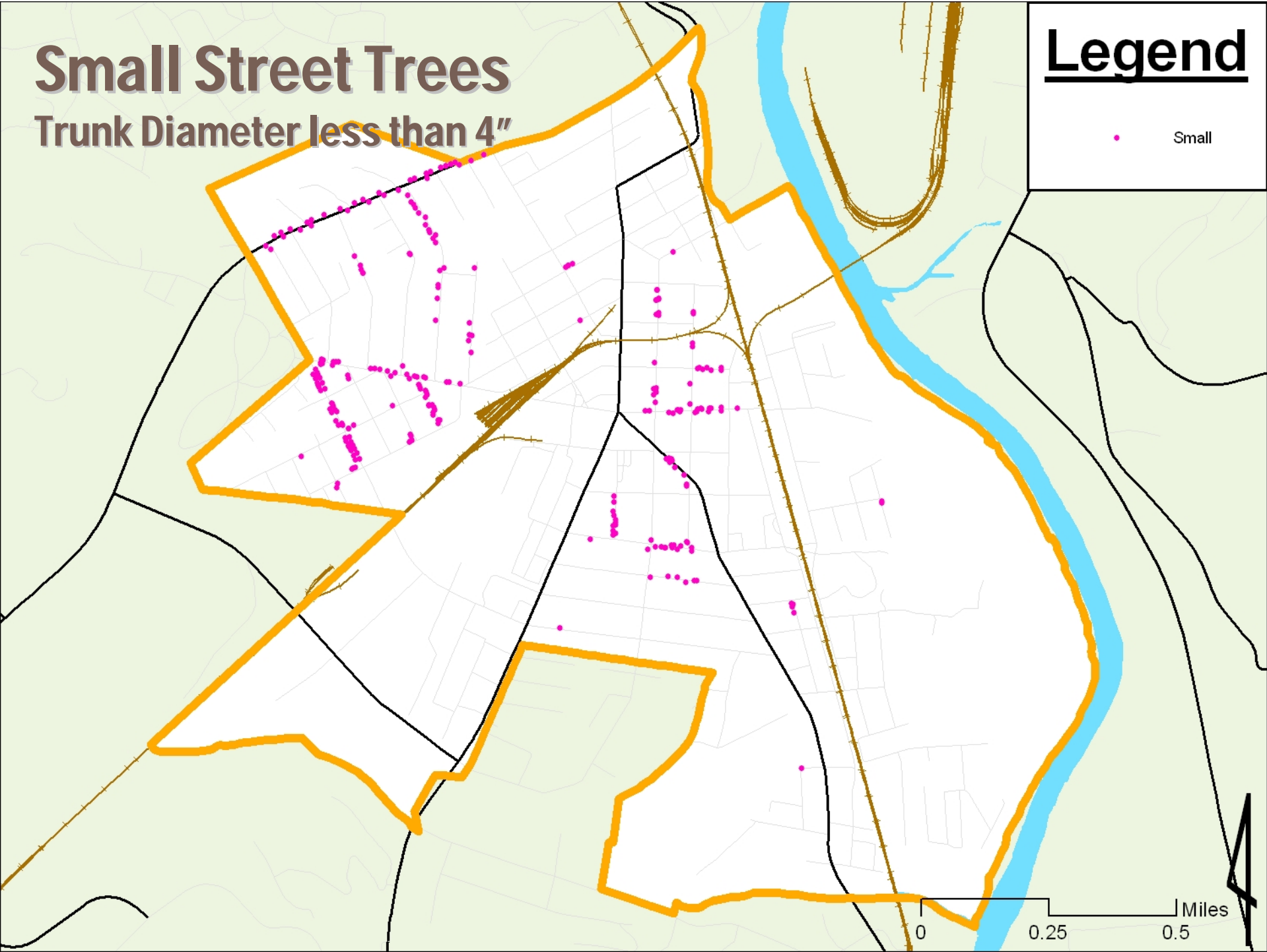
- Located in treelawn or tree well area
- Must have a sidewalk next to roadway
- Small tree
- Medium tree
- Large tree

Small Street Trees

Trunk Diameter less than 4"

Legend

• Small

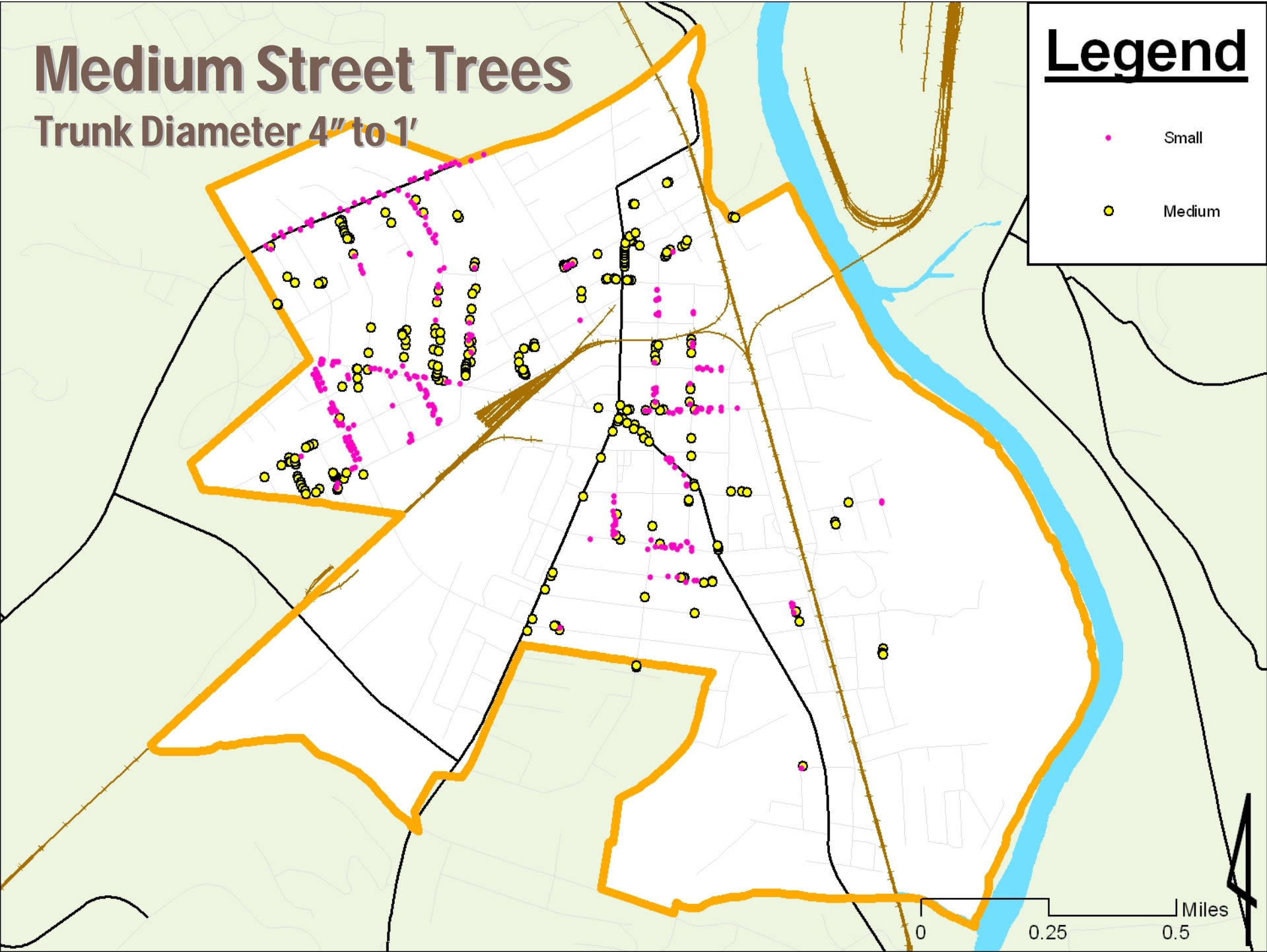


Medium Street Trees

Trunk Diameter 4" to 1'

Legend

- Small
- Medium

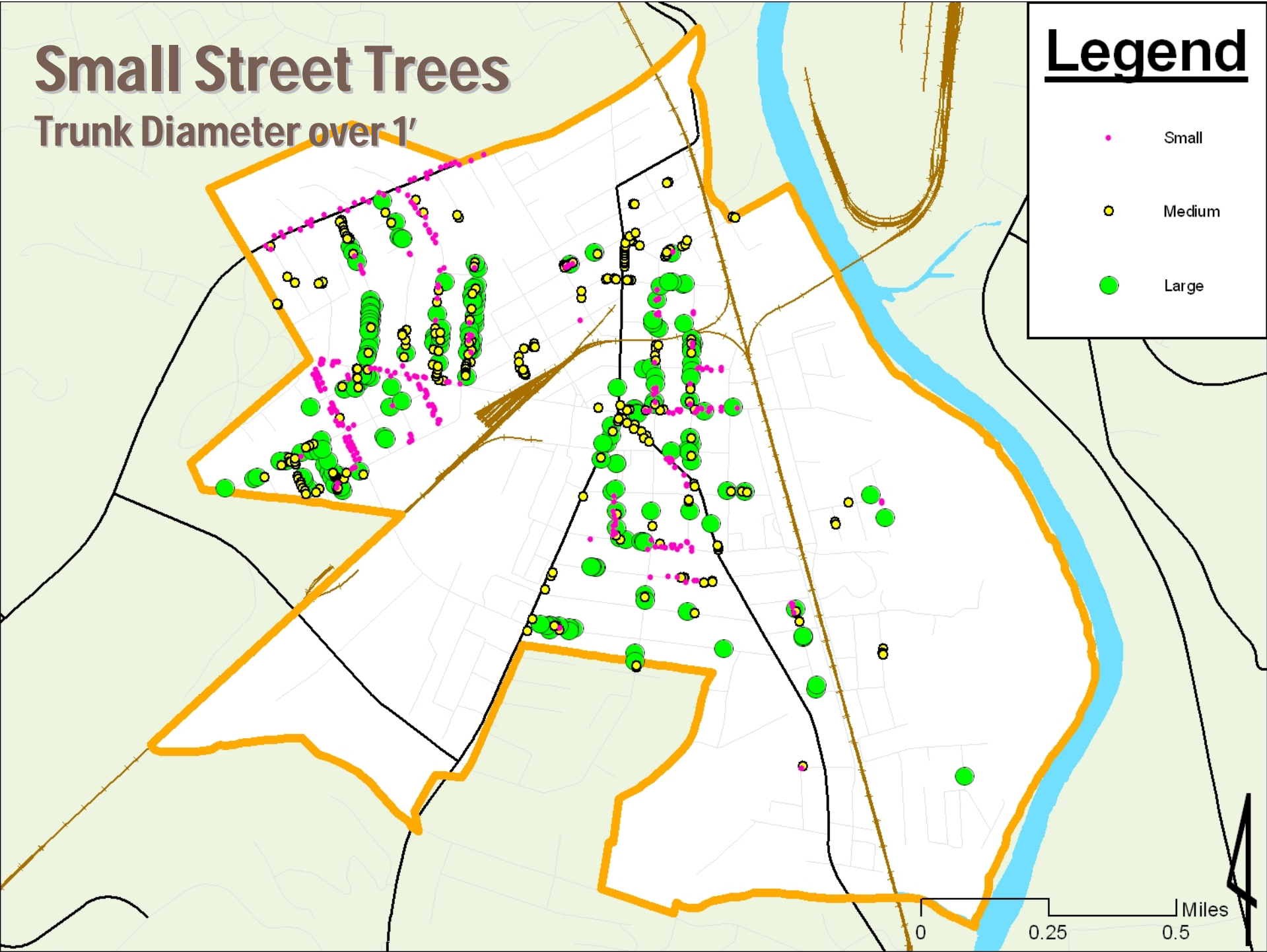


Small Street Trees

Trunk Diameter over 1'

Legend

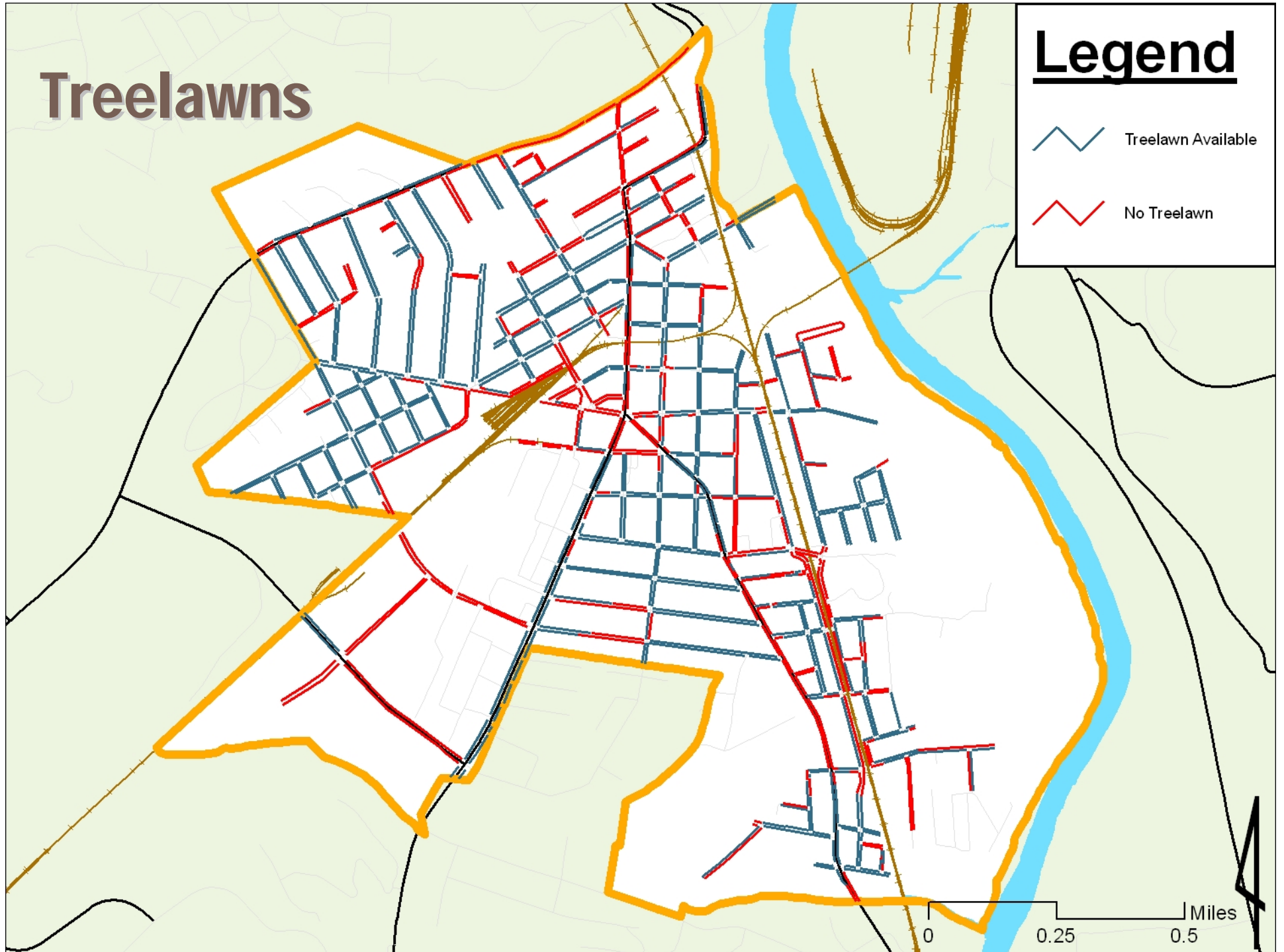
- Small
- Medium
- Large



Treelawns

Legend

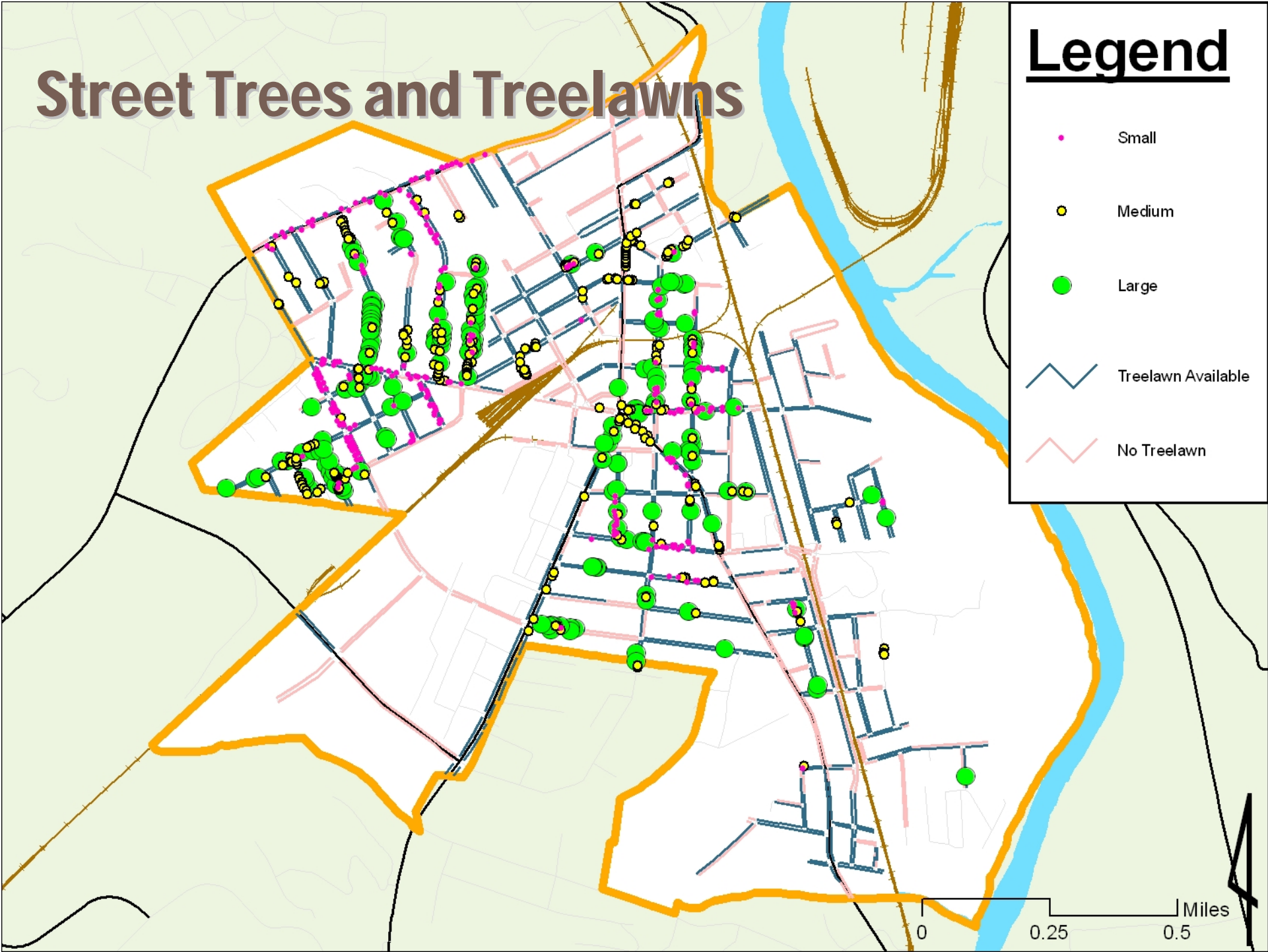
-  Treelawn Available
-  No Treelawn



Street Trees and Treelawns

Legend

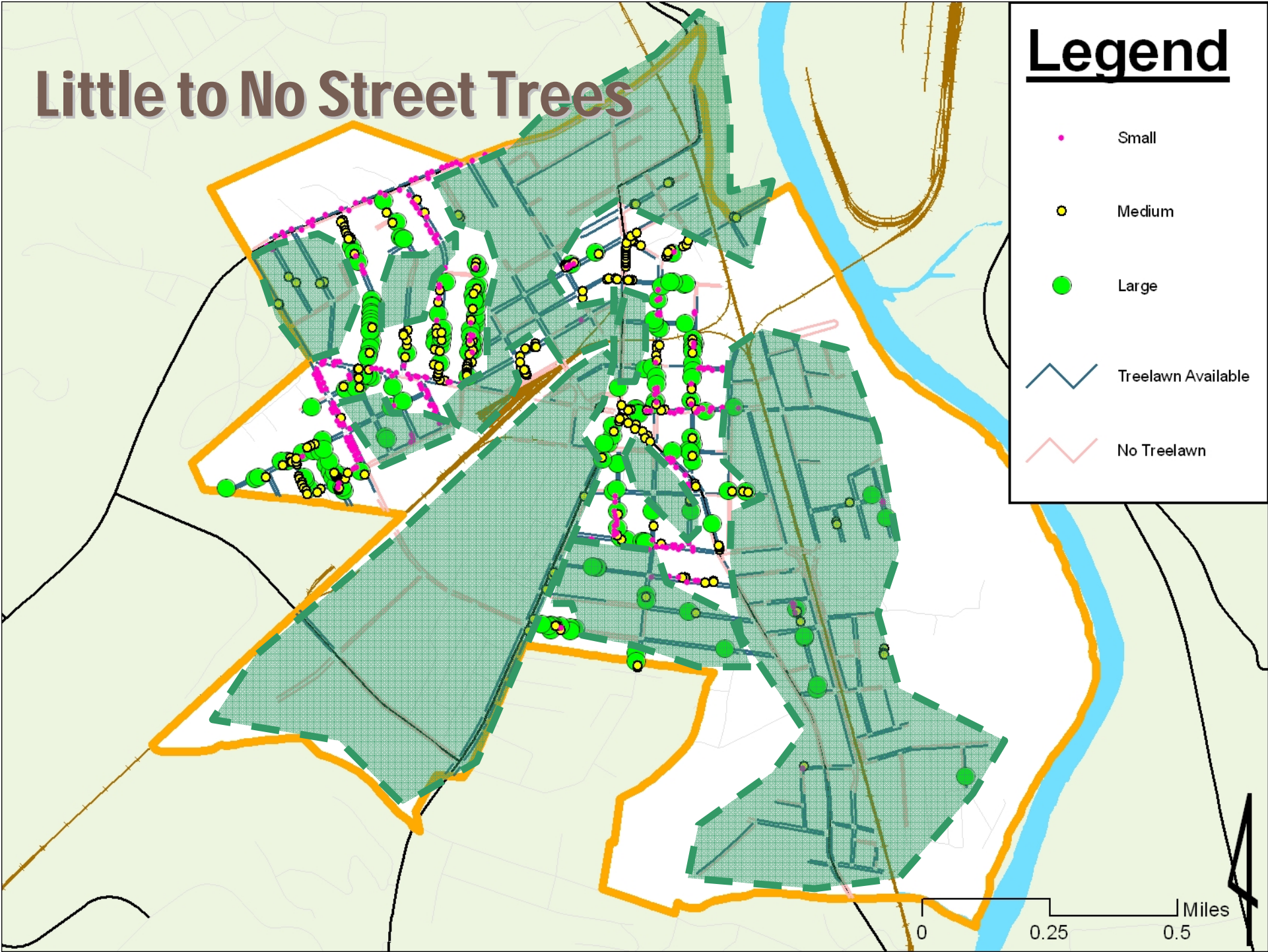
- Small
- Medium
- Large
- Treelawn Available
- No Treelawn



Little to No Street Trees

Legend

- Small
- Medium
- Large
- Treelawn Available
- No Treelawn



Streetscape-Street Trees

The Plan

43 of 71

- Identify opportunities for a street tree and overall neighborhood landscaping beautification program
- Locate potential areas to widen and improve existing treelawns that are too narrow for adequate tree growth
- Consider creating tree wells in the sidewalk where treelawns are unavailable

Streetscape-Street Trees

Planter Boxes

44 of 71



3.25.10

Latonia Small Area Study

Streetscape-Street Trees

The Plan

45 of 71

- Identify opportunities for a street tree and overall neighborhood landscaping beautification program
- Locate potential areas to widen and improve existing treelawns that are too narrow for adequate tree growth
- Consider creating tree wells in the sidewalk where treelawns are unavailable
- Examine programs to retain and strengthen existing street trees in the area
- Other issues to consider?

Streetscape

Parts of the Streetscape

Sidewalks



Streetscape-Sidewalks

Existing Conditions

47 of 71

- Sidewalks exist on both sides of the street on almost every street in area
- Notable areas with no sidewalks include:
 - ▣ Howard Litzler Drive
 - ▣ Streets in Sports Complex
- Sidewalks have varying reported conditions

Streetscape-Sidewalk Condition Rating

48 of 71

Legend

Sidewalk

RATING

- Not Included
- Less than 10%
- 10% to 50%
- More than 50% damaged
- Study Area
- US and State Hwy
- County and Local Roadways



3.25.10

Latonia Small Area Study

Streetscape-Sidewalks

The Plan

49 of 71

- Consider adding sidewalks where possible
 - Howard Litzler Drive
 - Streets in Sports Complex
- Examine improving sidewalk conditions
- Identify and rehabilitate segments damaged by street tree roots
- Other issues to consider?

Streetscape

Parts of the Streetscape

50 of 71

Vegetated Medians



3.25.10

Latonia Small Area Study

Streetscape-Vegetated Medians

Definition and Existing Conditions

51 of 71

- Planting areas between vehicular travel lanes
- Can be used as stormwater retention areas
- Adds to aforementioned benefits of trees
- Currently exist at
 - ▣ Clifford Avenue
 - ▣ West 31st Street
 - ▣ Summit Drive

Streetscape-Vegetated Median Clifford Avenue

52 of 71



3.25.10

Latonia Small Area Study

Streetscape-Vegetated Median West 31st Street

53 of 71



3.25.10

Latonia Small Area Study

Streetscape-Vegetated Median Summit Drive

54 of 71



3.25.10

Latonia Small Area Study

Streetscape-Vegetated Medians

The Plan

55 of 71

- Work to retain and strengthen the existing vegetated medians in the area
- Examine the possibility of installing new vegetated medians where roadways of adequate width and design can be reconfigured
- Aspects such as Decoursey service deliveries must be included in considerations
- Other issues to consider?

Wayfinding

3.25.10

Latonia Small Area Study

Wayfinding

What is wayfinding?

57 of 71

- A coordinated collection of signs that assist people in locating and navigating to attractions in an area

Wayfinding Latonia Examples

58 of 71



3.25.10

Latonia Small Area Study

Wayfinding

Where is wayfinding in Latonia?

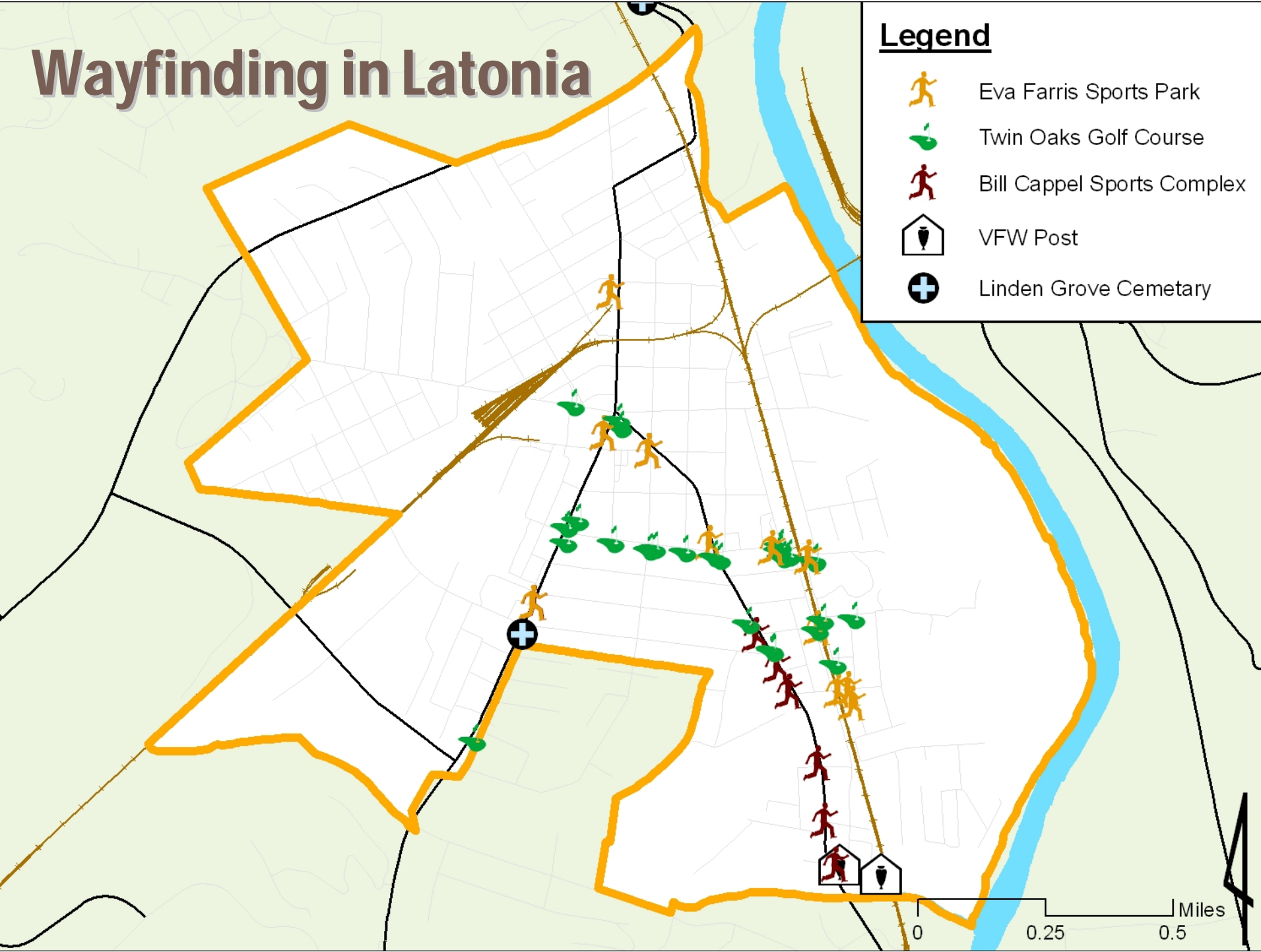
59 of 71

- Wayfinding for amenities in Latonia are only positioned in Latonia

Wayfinding in Latonia

Legend

-  Eva Farris Sports Park
-  Twin Oaks Golf Course
-  Bill Cappel Sports Complex
-  VFW Post
-  Linden Grove Cemetary



Wayfinding

Where is wayfinding in Latonia?

61 of 71

- Wayfinding for amenities in Latonia are only positioned in Latonia
- Misses out on large numbers of people that travel near the study area each day

Wayfinding

Average Daily Vehicular Traffic Near Latonia

62 of 71

Count Location	Traffic Volume
I-275 East of Taylor Mill Road	102,748
I-275 Between Madison Pike & Taylor Mill Road	107,042
Taylor Mill Road north of I-275	23,617
Madison Pike at Kyle's Lane	21,580
Madison Pike north of James Avenue	18,509

Wayfinding

The Plan

63 of 71

- Examine listing attractions on blue Interstate Logo Boards or Trailblazing Signs along I-275.

Wayfinding

The Plan - Interstate Signs

64 of 71



Wayfinding

The Plan

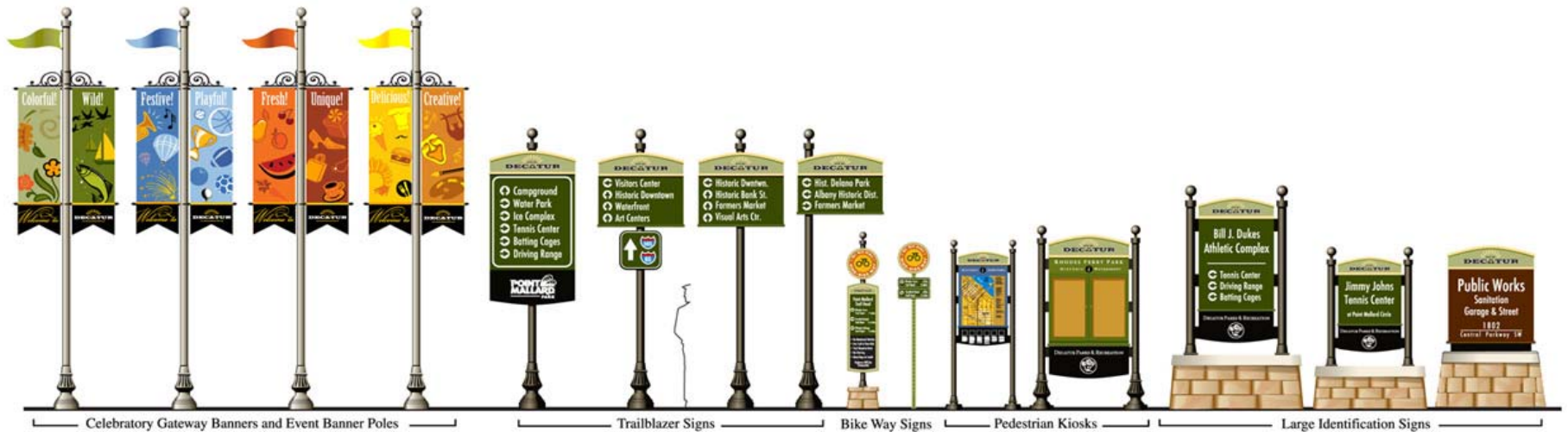
65 of 71

- Examine listing attractions on blue Interstate Logo Boards or Trailblazing Signs along I-275
- Look at possibility of implementing a Covington-wide wayfinding system

Wayfinding

The Plan - Covington-wide Wayfinding

CITY OF DECATUR, ALABAMA WAYFINDING SYSTEM



Wayfinding

The Plan

67 of 71

- Examine listing attractions on blue Interstate Logo Boards or Trailblazing Signs along I-275
- Look at possibility of implementing a Covington-wide wayfinding system
- Strive to achieve partnerships with Fort Wright and Taylor Mill to locate signs outside the neighborhood that will direct people to non-competing amenities in Latonia
- Other issues to consider?

Public Meeting

3.25.10

Latonia Small Area Study

Public Meeting

69 of 71

- April 29, 2010 – 6:00 p.m. to 7:30 p.m.
- Location is still TBD
- Meeting format:
 - ▣ Presentation of Existing Conditions
 - ▣ Group discussion to garner public input
 - Looking to supplement report if there are new issues
 - Any new topics would be included as an appendix
- **Your presence is requested!**

Next Meeting

3.25.10

Latonia Small Area Study

April 22, 2010 Tentative Agenda

71 of 71

- Existing Conditions Report approval
- More details about the public meeting
- Discuss specifics of
 - ▣ Housing
 - ▣ Industry
- Identify areas for redevelopment scenarios