

12.10.09

Latonia Small Area Study

Tonight's Agenda

2 of 16

1. What is a small area study?
2. Chair & Vice Chair
3. Attendance requirements
4. Future meeting dates
5. Looking at the neighborhood
6. January meeting agenda
7. Final market study presentation

12.10.09

Latonia Small Area Study

What is a small area study?

12.10.09

Latonia Small Area Study

What is a small area study?

The Comprehensive Plan

4 of 16

- Updated every 5 years
 - ▣ Next update to be adopted by December 2011
- Requirements per KRS 100
 - ▣ Statement of goals and objectives
 - ▣ Land Use plan element
 - ▣ Transportation plan element
 - ▣ Community Facilities plan element
 - ▣ Additional elements

What is a small area study?

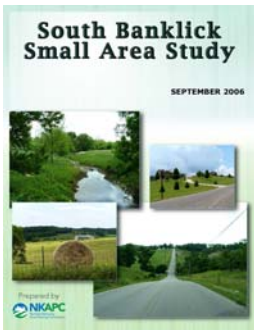
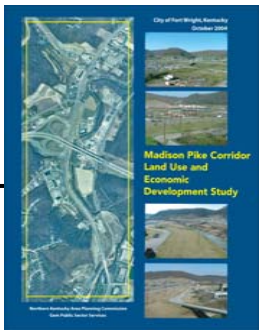
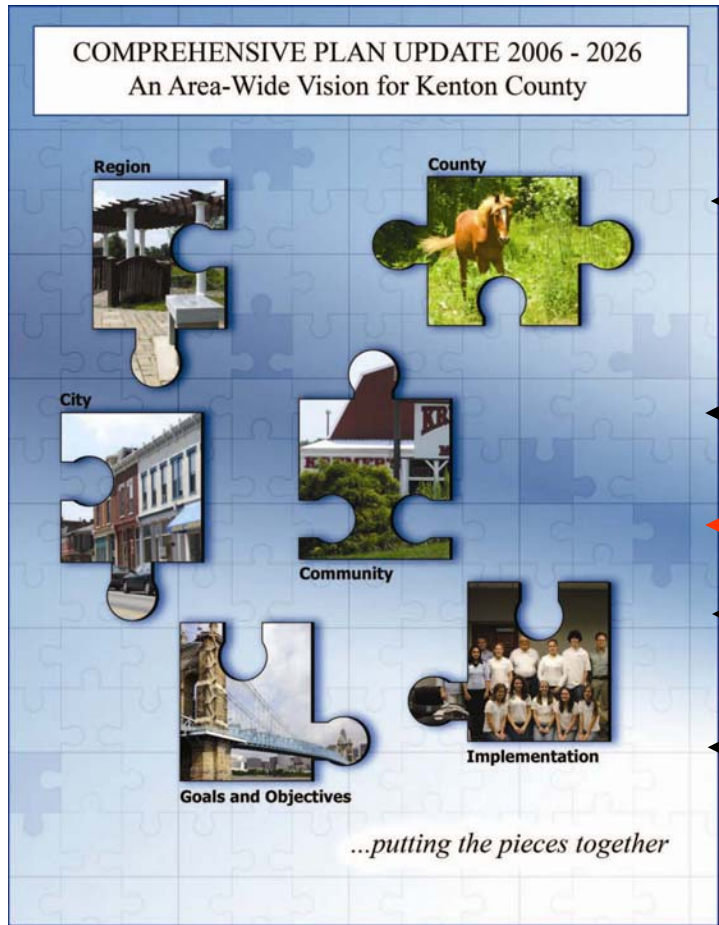
The Comprehensive Plan

5 of 16

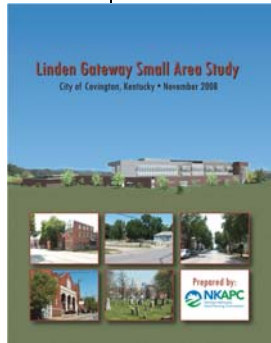
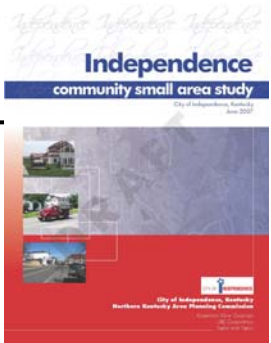
- A comprehensive approach to planning at a “neighborhood” level where research and public input are focused on the needs of the area resulting in a plan both specifically suited to identified needs and crafted based on input from residents and business owners most affected by its recommendations
- The process is intended to create a plan that will be more readily implemented because the public and decision-makers have together gone through the preparation process and clearly understand the intent of plan recommendations and actions necessary to accomplish them

What is a small area study?

The Comprehensive Plan



**Latonia Small
Area Study**



What is a small area study?

Your role as a task force member

7 of 16

- This is **YOUR** plan – we just help make it!
- **Consensus from the members**
 - Goals and Objectives
 - Existing Conditions
 - Redevelopment Scenarios
 - Recommendations
 - Implementation
- **Vote**
 - Final report draft

What is a small area study?

Becoming part of the comprehensive plan

8 of 16

- Task Force Approval
Submission to City Council

- City Council Approval
Submission to NKAPC

- NKAPC Recommendation
Submission to KCPC

- KCPC Approval
 - ▣ Now part of Comprehensive Plan

Tonight's Considerations

12.10.09

Latonia Small Area Study

Tonight's Considerations

Chair and Vice Chair

10 of 16

- What does the chair do?
 - ▣ Point of contact between Task Force and NKAPC staff
 - ▣ Works with staff to set meeting agenda
 - ▣ Helps run task force meetings
- What does the vice chair do?
 - ▣ Serves as the chair in their absence
- Volunteers or nominees?
- Will look for consensus at January meeting

Tonight's Considerations

Attendance

11 of 16

- Works to try and limit absences
- Helps with voting at the end of the study
- Has worked well in other small area studies

Future Meetings

12.10.09

Latonia Small Area Study

Future Meetings

Task Force Meeting Dates

13 of 16

- January 28, 2009
- February 25, 2010
- March 25, 2010
- April 22, 2010
- May 27, 2010
- **June 10, 2010** – First of two June meetings
- June 24, 2010
- July 22, 2010
- August 26, 2010
- September 23, 2010
- October 28, 2010

Future Meetings

Looking at the neighborhood exercise

14 of 16

- Take some time to look at the area before the next meeting.
 - ▣ What do you see that you like?
 - ▣ What could use improvement?
 - ▣ Are there outside influences that affect Latonia either positively or negatively?
- Use the sheet to make notes on what you see.
- We will discuss in the January meeting.

Future Meetings

January meeting agenda

15 of 16

January 28, 2010

- Elect Chair & Vice Chair
- 30 years of change
- SWOT analysis
- Branding the study
- Vision & Goals

Market Study

16 of 16

- Welcome Back Doug Harnish
- Market Metric\$, LLC

12.10.09

Latonia Small Area Study