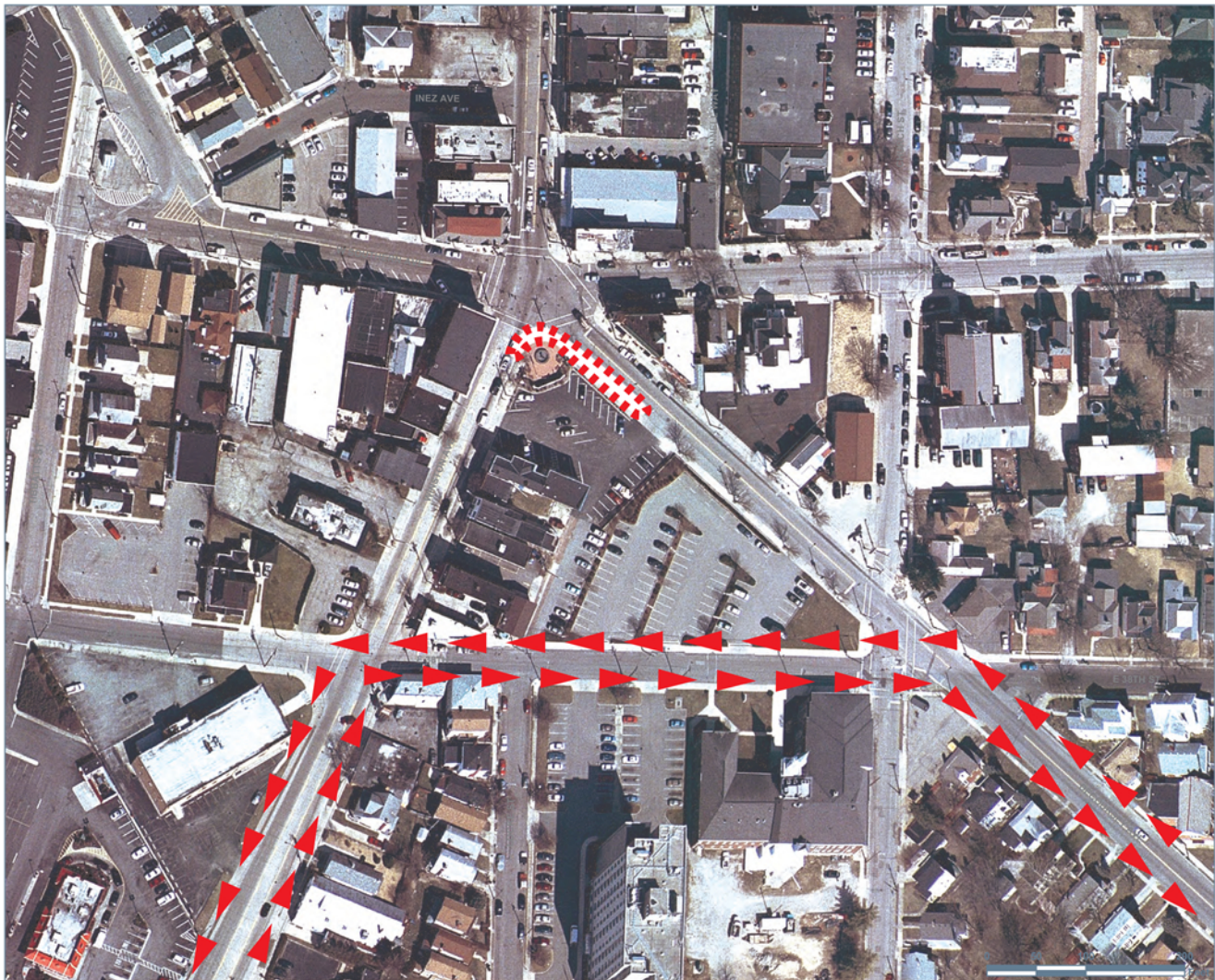


Transportation

Ritte's Corner



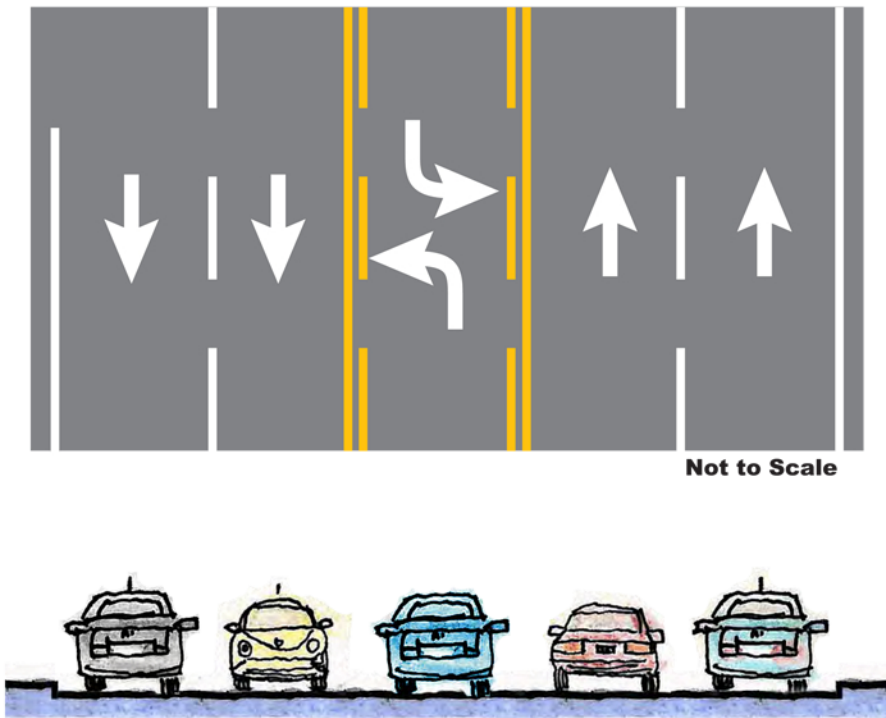
Truck Traffic Options

Option A-
Improve intersection at Ritte's Corner to allow for easier truck turning

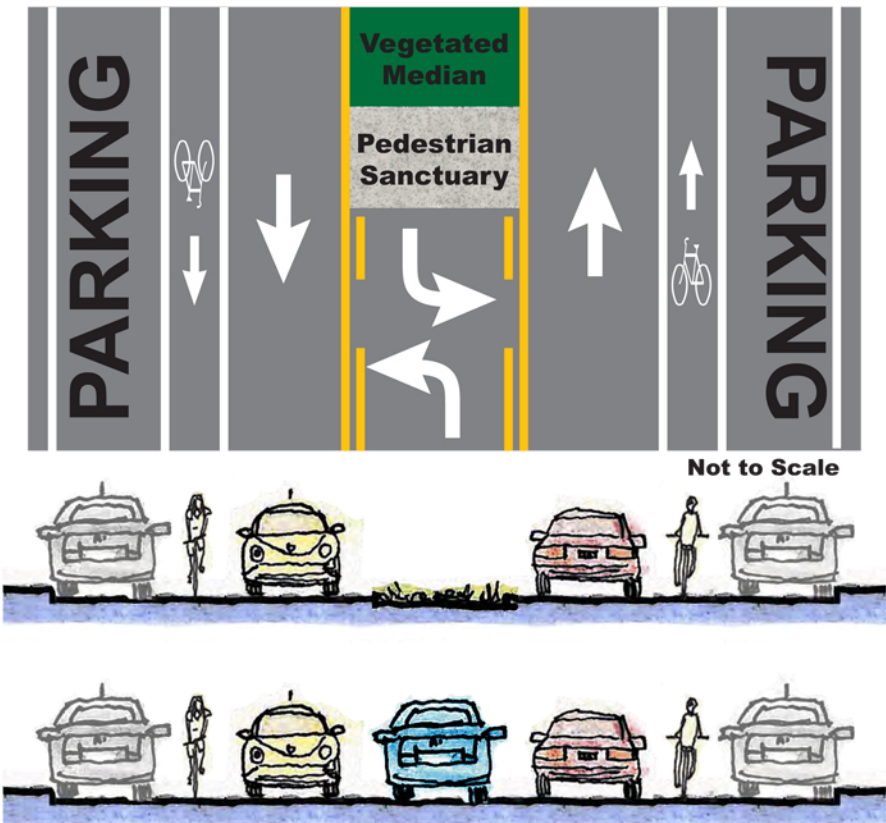
Option B-
Improve 38th Street to remove truck traffic from Ritte's Corner

Winston Avenue

Existing



Lane Diet



Benefits

- High vehicular speeds
- Low delay
- Substantial room for traffic growth

Drawbacks

- High vehicular speeds
- Long crossing distance (pedestrians)
- No parking opportunity

Benefits

- Traffic calming
- Reduced pedestrian crossing distance
- One direction of traffic crossed at a time
- Pedestrian refuge
- On-street parking
- Bike lane
- Opportunity for enhancement (landscaping)

Drawbacks

- Reduced vehicular speeds
- Increased delay
- Limited ability to handle traffic growth
- Delay from stopped transit vehicles